

**General information**

Field name	ELDFISK
Factmaps in new window	<a href="#">link</a>
Current activity status	Producing
Discovery wellbore	<a href="#">2/7-1</a>
Discovery year.	1970
Main area	North Sea
Main supply base	Tananger
NPDID field	43527

**Picture**

**Discoveries included**

Discovery name
<a href="#">2/7-1 Eldfisk</a>
<a href="#">2/7-8</a>

**Activity status - history**

Status	Status from	Status to
Producing	08.08.1979	
Approved for production	25.04.1975	07.08.1979

**Located in**

Block name	Prod. licence
2/7	<a href="#">018</a>

**Owner - current**

Owner kind	Owner name
PRODUCTION LICENSE	<a href="#">018</a>

**Operatorship - current**

Company name
<a href="#">ConocoPhillips Skandinavia AS</a>

**Licenseses - current**



Company name	Nation code	Company share [%]
<a href="#">Total E&amp;P Norge AS</a>	NO	39.896000
<a href="#">ConocoPhillips Skandinavia AS</a>	NO	35.112000
<a href="#">Vår Energi AS</a>	NO	12.388000
<a href="#">Equinor Energy AS</a>	NO	7.604000
<a href="#">Petoro AS</a>	NO	5.000000

**The NPD estimate for reserves (Norwegian share)**

Valid date: 31.12.2019

Orig. recoverable oil [mill Sm3]	Orig. recoverable gas [bill Sm3]	Orig. recoverable NGL [mill tonn]	Orig. recoverable cond. [mill Sm3]	Orig. recoverable oil eq. [mill Sm3 o.e]
138.20	44.05	4.81	0.00	191.39

Remaining oil [mill Sm3]	Remaining gas [bill Sm3]	Remaining NGL [mill tonn]	Remaining cond. [mill Sm3]	Remaining oil eq. [mill Sm3 o.e]
21.48	2.46	0.34	0.00	24.59

Orig. inplace oil [mill Sm3]	Orig. inplace ass. liquid [mill Sm3]	Orig. inplace ass. gas [bill Sm3]	Orig. inplace free gas [bill Sm3]
439.00	0.00	119.00	0.00

**Description**

Type	Text	Date updated
Development	Eldfisk is a field in the southern part of the Norwegian sector in the North Sea, 10 kilometres south of the Ekofisk field. The water depth is 70 metres. Eldfisk was discovered in 1970, and the plan for development and operation (PDO) was approved in 1975. The initial development consisted of three facilities: Eldfisk B (a combined drilling, wellhead and process facility), and Eldfisk A and Eldfisk FTP (wellhead and process facilities). Production started in 1979. A PDO for water injection was approved in 1997, and the injection facility Eldfisk E was installed in 1999. This facility also provides some the water to Ekofisk K for injection on the Ekofisk field. A PDO for Eldfisk II was approved in 2011, and included a new integrated facility, Eldfisk S, connected by bridge to Eldfisk E. Production from Eldfisk S started in 2015. This facility replaces several functions of Eldfisk A and Eldfisk FTP. Eldfisk A is converted into a wellhead platform and Eldfisk FTP is used as bridge-support facility. The Embla field, located south of Eldfisk, is tied to Eldfisk S.	12.02.2020



Reservoir	Eldfisk produces oil from chalk of Late Cretaceous and early Paleocene age in the Hod, Tor and Ekofisk Formations. The reservoir rock has high porosity, but low permeability. Natural fracturing allows the reservoir fluids to flow more easily. The field consists of three structures: Alpha, Bravo and Eldfisk Øst. The reservoirs lie at depths of 2,700-2,900 metres.	26.02.2020
Recovery	Eldfisk was originally produced by pressure depletion. In 1999, water injection was implemented through horizontal injection wells. Pressure depletion and the water weakening effect have caused reservoir compaction, which in turn has resulted in several metres of seabed subsidence. The Eldfisk II project extends waterflooding on the field.	11.04.2017
Transport	Oil and gas are sent to the export pipelines via the Ekofisk Centre. Gas from the Ekofisk area is transported via the Norpipe gas pipeline to Emden in Germany, while the oil is sent via the Norpipe oil pipeline to Teesside in the UK.	16.03.2018
Status	The drilling campaign in the Eldfisk II project started in 2014, and drilling of the remaining wells is ongoing. Drilling targets are also being matured in the eastern structure, Eldfisk Øst. A further development of the northern part of the field is being evaluated.	25.02.2020

**Investments (expected)**

Future investments from 2019 [mill NOK 2019-kroner] : 13324
---

**Investments (historical)**

	Investments [mill NOK nominal values]
Sum	72149
2018	1948
2017	3045
2016	2867
2015	4616
2014	8152
2013	9294
2012	7264
2011	3748
2010	2114
2009	2242
2008	1800
2007	1232
2006	2066
2005	996
2004	1159
2003	866
2002	455
2001	918



2000	1332
1999	2605
1998	2472
1997	599
1996	936
1995	625
1994	307
1993	13
1992	11
1991	79
1990	76
1989	231
1988	347
1987	119
1986	101
1985	229
1984	139
1983	273
1982	453
1981	467
1980	621
1979	1175
1978	1252
1977	915
1976	1264
1975	554
1974	172

### Production , saleable

	Month	Net - oil [mill Sm3]	Net - gas [bill Sm3]	Net - condensate [mill Sm3]	Net - NGL [mill Sm3]	Net - oil equivalents [mill Sm3]
Sum		117.967487	41.597856	0.000000	8.533527	168.098870
2020		1.427499	0.142860	0.000000	0.044287	1.614646
2019		2.325186	0.244598	0.000000	0.074895	2.644679
2018		2.429397	0.276703	0.000000	0.077286	2.783386
2017		2.532525	0.340787	0.000000	0.084259	2.957571
2016		2.457843	0.324835	0.000000	0.082901	2.865579
2015		2.380954	0.340688	0.000000	0.085520	2.807162
2014		1.954917	0.275454	0.000000	0.069333	2.299704
2013		1.929960	0.256955	0.000000	0.069430	2.256345
2012		2.644953	0.283571	0.000000	0.089178	3.017702
2011		2.893840	0.475727	0.000000	0.108093	3.477660
2010		2.873997	0.504990	0.000000	0.114753	3.493740



# NPD Factpages

## Field

Printed: 22.10.2020 - 08:14

2009	2.858015	0.484842	0.000000	0.117331	3.460188
2008	3.022456	0.562420	0.000000	0.136460	3.721336
2007	2.644137	0.533890	0.000000	0.121008	3.299035
2006	3.012221	0.693708	0.000000	0.152450	3.858379
2005	3.510821	0.860075	0.000000	0.177832	4.548728
2004	3.163272	0.884927	0.000000	0.184533	4.232732
2003	2.418570	0.742094	0.000000	0.141576	3.302240
2002	2.392482	0.926202	0.000000	0.163374	3.482058
2001	1.995950	0.749280	0.000000	0.145434	2.890664
2000	1.272862	0.663800	0.000000	0.117158	2.053820
1999	1.164147	0.556743	0.000000	0.100657	1.821547
1998	1.517407	1.067927	0.000000	0.168756	2.754090
1997	2.353065	1.703038	0.000000	0.259537	4.315640
1996	2.334067	1.670471	0.000000	0.242935	4.247473
1995	2.692235	1.995236	0.000000	0.291626	4.979097
1994	2.229795	1.548579	0.000000	0.229390	4.007764
1993	2.450877	1.711507	0.000000	0.250734	4.413118
1992	2.784801	1.841552	0.000000	0.271134	4.897487
1991	2.980452	1.982256	0.000000	0.328683	5.291391
1990	3.681020	1.309914	0.000000	0.481153	5.472087
1989	4.205455	1.566550	0.000000	0.558868	6.330873
1988	3.821610	2.246695	0.000000	0.510611	6.578916
1987	3.144948	1.358570	0.000000	0.294376	4.797894
1986	3.357574	1.443272	0.000000	0.305772	5.106618
1985	3.377520	1.393686	0.000000	0.330310	5.101516
1984	3.380447	1.389068	0.000000	0.295573	5.065088
1983	3.714956	1.439742	0.000000	0.328743	5.483441
1982	4.114687	1.385161	0.000000	0.278639	5.778487
1981	4.933234	1.511063	0.000000	0.280940	6.725237
1980	5.875162	1.495868	0.000000	0.295319	7.666349
1979	1.712171	0.412552	0.000000	0.072680	2.197403

## Production , sum wellbores

	Month	Gross - oil [mill Sm3]	Gross - gas [bill Sm3]	Gross - condensate [mill Sm3]	Gross - oil equivalents [mill Sm3]
Sum		120.621821	52.066261	0.000000	172.688082
2020		1.384914	0.265850	0.000000	1.650764
2019		2.239739	0.430748	0.000000	2.670487
2018		2.332008	0.489668	0.000000	2.821676
2017		2.445107	0.557737	0.000000	3.002844
2016		2.370007	0.548639	0.000000	2.918646
2015		2.302458	0.580987	0.000000	2.883445
2014		1.891712	0.452301	0.000000	2.344013



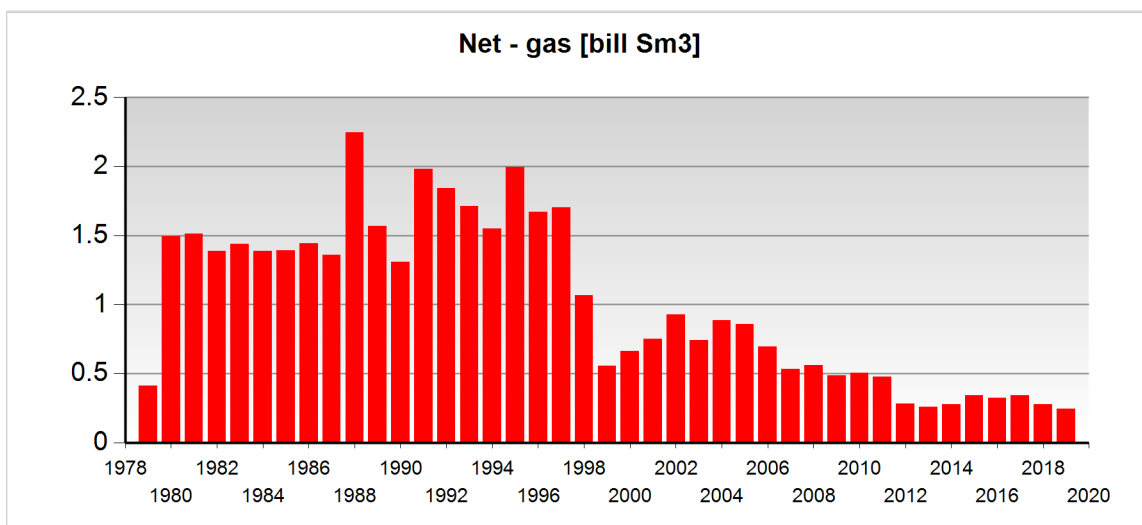
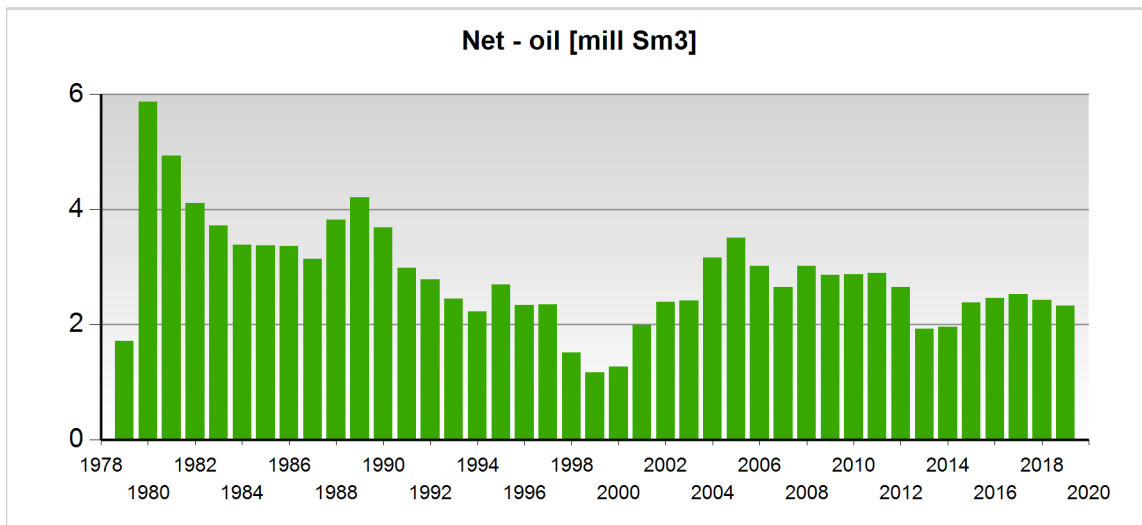
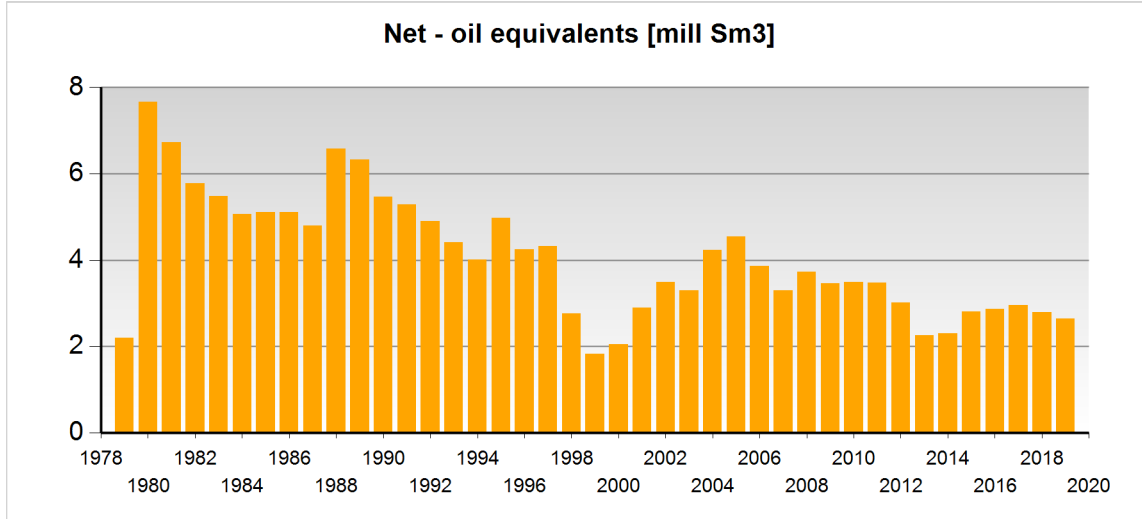
# NPD Factpages

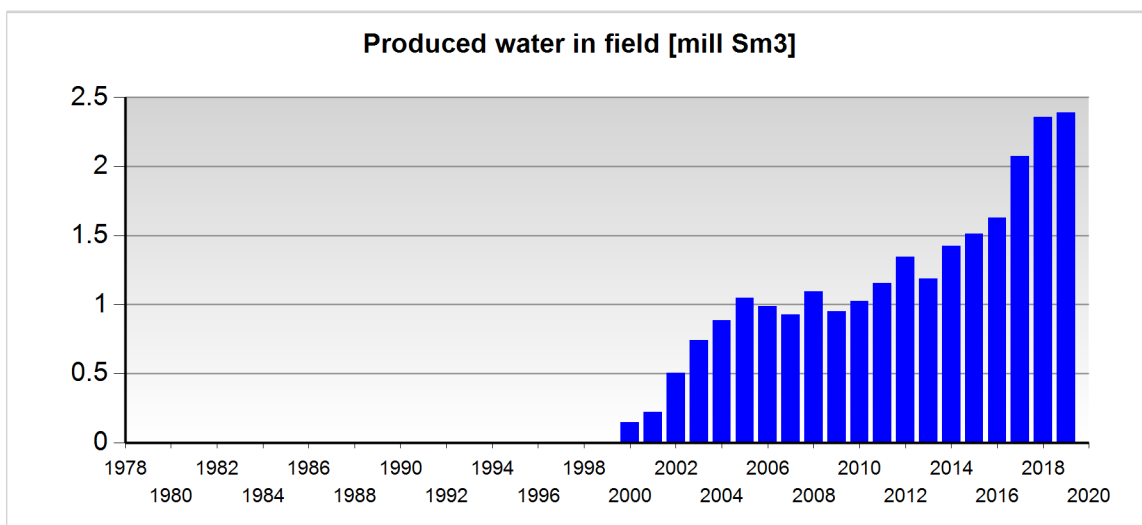
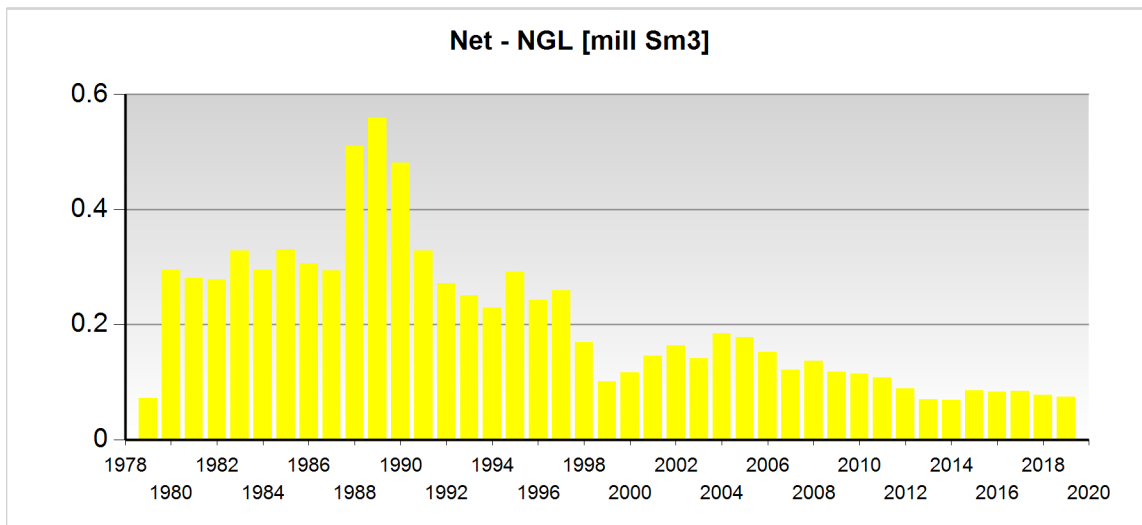
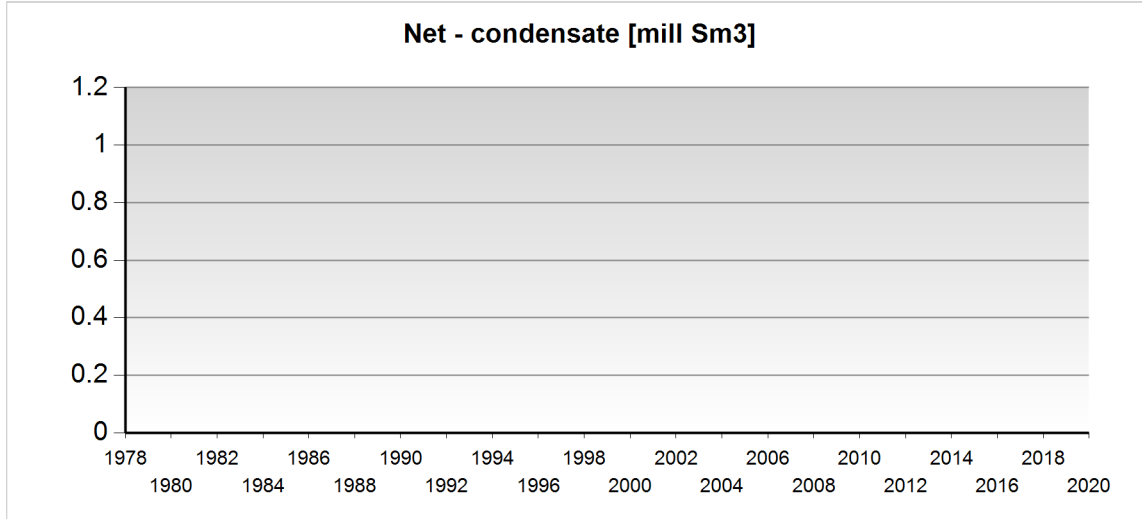
## Field

Printed: 22.10.2020 - 08:14

2013	1.862533	0.467438	0.000000	2.329971
2012	1.993619	0.388613	0.000000	2.382232
2011	2.362341	0.577276	0.000000	2.939617
2010	2.539271	0.651705	0.000000	3.190976
2009	2.788685	0.752821	0.000000	3.541506
2008	2.940770	0.830492	0.000000	3.771262
2007	2.574944	0.767804	0.000000	3.342748
2006	2.945826	0.973762	0.000000	3.919588
2005	3.418975	1.157018	0.000000	4.575993
2004	3.078299	1.224255	0.000000	4.302554
2003	2.355816	1.140217	0.000000	3.496033
2002	2.328362	1.454840	0.000000	3.783202
2001	1.956265	1.299811	0.000000	3.256076
2000	1.223567	0.849750	0.000000	2.073317
1999	1.262345	0.566593	0.000000	1.828938
1998	1.709535	1.166151	0.000000	2.875686
1997	2.698600	1.893734	0.000000	4.592334
1996	2.588818	1.813725	0.000000	4.402543
1995	2.988255	2.170455	0.000000	5.158710
1994	2.455208	1.694598	0.000000	4.149806
1993	2.688112	1.870075	0.000000	4.558187
1992	3.029787	2.009419	0.000000	5.039206
1991	3.277610	2.174392	0.000000	5.452002
1990	4.115656	2.689799	0.000000	6.805455
1989	4.713347	2.977589	0.000000	7.690936
1988	4.275292	2.437352	0.000000	6.712644
1987	3.381486	1.476083	0.000000	4.857569
1986	3.595911	1.573373	0.000000	5.169284
1985	3.647590	1.509081	0.000000	5.156671
1984	3.596495	1.502511	0.000000	5.099006
1983	3.969341	1.555338	0.000000	5.524679
1982	4.308652	1.486786	0.000000	5.795438
1981	5.114286	1.596506	0.000000	6.710792
1980	6.103566	1.585978	0.000000	7.689544
1979	1.766711	0.454991	0.000000	2.221702

## Production - charts





Any produced water is only included after 1.1.2000

## Wellbores - exploration





Wellbore name	Entered date	Completed date	Purpose	Status	Content
<a href="#">2/7-1</a>	03.08.1970	11.12.1970	WILDCAT	P&A	OIL
<a href="#">2/7-6</a>	31.03.1973	08.06.1973	APPRAISAL	P&A	OIL
<a href="#">2/7-7</a>	02.01.1973	29.03.1973	APPRAISAL	P&A	OIL
<a href="#">2/7-8</a>	08.06.1973	12.08.1973	WILDCAT	P&A	OIL
<a href="#">2/7-15</a>	29.01.1980	02.06.1980	APPRAISAL	P&A	OIL
<a href="#">2/7-28</a>	08.03.1992	07.08.1992	APPRAISAL	P&A	SHOWS

### Wellbores - development

Wellbore name	Entered date	Completed date	Purpose	Content
<a href="#">2/7-A-1</a>	11.05.1990	30.07.1990	PRODUCTION	OIL
<a href="#">2/7-A-2</a>	05.11.1978	26.12.1978	PRODUCTION	OIL
<a href="#">2/7-A-2 A</a>	05.04.1989	19.05.1989	PRODUCTION	OIL
<a href="#">2/7-A-2 B</a>	04.03.2003	09.04.2003	PRODUCTION	OIL
<a href="#">2/7-A-3</a>	01.09.1979	07.12.1979	PRODUCTION	OIL
<a href="#">2/7-A-3 A</a>	26.06.1982	31.07.1982	PRODUCTION	OIL
<a href="#">2/7-A-3 B</a>	15.06.2003	12.07.2003	PRODUCTION	OIL
<a href="#">2/7-A-4</a>	07.05.1988	10.06.1988	PRODUCTION	OIL
<a href="#">2/7-A-4 A</a>	12.07.1995	06.09.1995	INJECTION	WATER
<a href="#">2/7-A-5</a>	20.10.1979	06.02.1980	PRODUCTION	DRY
<a href="#">2/7-A-5 A</a>	01.05.1995	11.06.1995	INJECTION	WATER
<a href="#">2/7-A-5 B</a>	21.01.2008	24.03.2008	INJECTION	WATER
<a href="#">2/7-A-6</a>	02.05.1978	04.01.1979	PRODUCTION	OIL
<a href="#">2/7-A-6 A</a>	17.03.2004	21.05.2004	PRODUCTION	OIL
<a href="#">2/7-A-7</a>	14.04.1978	26.09.1981	PRODUCTION	NOT APPLICABLE
<a href="#">2/7-A-7 A</a>	10.07.1989	17.09.1989	PRODUCTION	NOT APPLICABLE
<a href="#">2/7-A-7 B</a>	26.12.1994	28.01.1995	INJECTION	WATER
<a href="#">2/7-A-8</a>	30.10.1987	30.01.1988	PRODUCTION	OIL
<a href="#">2/7-A-8 A</a>	22.11.1989	26.12.1989	INJECTION	CUTTINGS
<a href="#">2/7-A-9</a>	21.05.1978	29.01.1979	PRODUCTION	OIL
<a href="#">2/7-A-9 A</a>	08.08.1996	17.09.1996	PRODUCTION	OIL
<a href="#">2/7-A-10</a>	15.11.1980	28.12.1980	PRODUCTION	OIL
<a href="#">2/7-A-11</a>	22.12.1979	18.06.1980	PRODUCTION	OIL
<a href="#">2/7-A-12</a>	30.05.1978	19.02.1979	PRODUCTION	NOT APPLICABLE
<a href="#">2/7-A-12 A</a>	26.05.1996	11.07.1996	PRODUCTION	OIL
<a href="#">2/7-A-13</a>	27.06.1988	23.12.1988	PRODUCTION	OIL
<a href="#">2/7-A-13 A</a>	01.11.1994	07.12.1994	INJECTION	WATER
<a href="#">2/7-A-13 B</a>	09.10.2008	11.12.2008	INJECTION	WATER
<a href="#">2/7-A-14</a>	05.04.1979	11.07.1979	PRODUCTION	OIL
<a href="#">2/7-A-14 A</a>	13.10.1996	18.11.1996	PRODUCTION	OIL



# NPD Factpages

## Field

Printed: 22.10.2020 - 08:14

OLJEDIREKTORATET

<a href="#">2/7-A-14 B</a>	16.05.2009	14.09.2009	PRODUCTION	OIL
<a href="#">2/7-A-15</a>	07.06.1978	27.04.1996	PRODUCTION	OIL
<a href="#">2/7-A-15 A</a>	19.10.2004	29.12.2004	INJECTION	WATER
<a href="#">2/7-A-15 B</a>	04.10.2011	31.01.2012	PRODUCTION	OIL
<a href="#">2/7-A-16</a>	15.05.1978	05.11.1979	PRODUCTION	OIL
<a href="#">2/7-A-16 A</a>	26.09.1999	15.11.1999	PRODUCTION	OIL
<a href="#">2/7-A-17</a>	03.09.1986	24.10.1986	PRODUCTION	OIL
<a href="#">2/7-A-17 A</a>	11.04.2001	14.05.2001	PRODUCTION	OIL
<a href="#">2/7-A-18</a>	19.05.1979	23.07.1979	PRODUCTION	OIL
<a href="#">2/7-A-18 A</a>	21.02.1990	29.04.1990	PRODUCTION	OIL
<a href="#">2/7-A-18 B</a>	08.03.2001	23.03.2001	PRODUCTION	OIL
<a href="#">2/7-A-18 C</a>	04.12.2003	11.01.2004	PRODUCTION	OIL
<a href="#">2/7-A-18 D</a>	01.10.2009	02.12.2009	INJECTION	WATER
<a href="#">2/7-A-18 E</a>	05.12.2009	15.12.2009	PRODUCTION	OIL
<a href="#">2/7-A-19</a>	01.05.1978	24.04.1979	PRODUCTION	OIL
<a href="#">2/7-A-19 A</a>	14.09.1990	30.10.1990	PRODUCTION	OIL
<a href="#">2/7-A-19 B</a>	09.01.2000	13.06.2000	PRODUCTION	OIL/GAS
<a href="#">2/7-A-20</a>	25.07.1978	14.05.1979	PRODUCTION	OIL
<a href="#">2/7-A-20 A</a>	13.07.1984	16.07.1984	PRODUCTION	OIL
<a href="#">2/7-A-20 B</a>	09.04.2006	10.05.2006	PRODUCTION	OIL
<a href="#">2/7-A-21</a>	08.01.1979	19.05.1979	PRODUCTION	DRY
<a href="#">2/7-A-21 A</a>	15.11.1982	14.01.1983	PRODUCTION	OIL
<a href="#">2/7-A-21 B</a>	28.08.2002	03.10.2002	PRODUCTION	OIL
<a href="#">2/7-A-22</a>	29.05.1978	05.06.1978	PRODUCTION	NOT APPLICABLE
<a href="#">2/7-A-22 A</a>	06.08.2000	20.09.2000	PRODUCTION	OIL
<a href="#">2/7-A-22 B</a>	11.06.2008	18.07.2008	PRODUCTION	OIL
<a href="#">2/7-A-23</a>	19.11.1979	17.03.1980	PRODUCTION	OIL
<a href="#">2/7-A-23 A</a>			PRODUCTION	NOT APPLICABLE
<a href="#">2/7-A-23 B</a>	10.12.1990	22.02.1991	PRODUCTION	OIL/GAS
<a href="#">2/7-A-24</a>	26.11.1979	18.01.1980	PRODUCTION	DRY
<a href="#">2/7-A-24 A</a>	26.06.2002	06.08.2002	INJECTION	WATER
<a href="#">2/7-A-25</a>	05.06.1978	08.01.1979	PRODUCTION	OIL
<a href="#">2/7-A-26</a>	08.10.1978	20.12.1978	PRODUCTION	OIL
<a href="#">2/7-A-27</a>	22.08.1980	27.09.1980	PRODUCTION	OIL
<a href="#">2/7-A-27 A</a>	18.04.2011	13.07.2011	PRODUCTION	OIL
<a href="#">2/7-A-28</a>	15.06.1978	12.12.1980	PRODUCTION	DRY
<a href="#">2/7-A-28 A</a>	01.11.2000	16.01.2001	PRODUCTION	OIL
<a href="#">2/7-A-29</a>	01.10.1981	24.12.1981	PRODUCTION	OIL
<a href="#">2/7-A-29 A</a>	23.02.1986	05.04.1986	PRODUCTION	OIL
<a href="#">2/7-A-29 B</a>	11.07.2004	15.08.2004	PRODUCTION	OIL
<a href="#">2/7-A-30</a>	18.06.1980	21.08.1980	PRODUCTION	OIL
<a href="#">2/7-A-30 A</a>	25.06.1983	01.07.1983	PRODUCTION	OIL



# NPD Factpages

## Field

Printed: 22.10.2020 - 08:14

<a href="#">2/7-A-30 B</a>	31.10.2006	04.02.2007	PRODUCTION	OIL
<a href="#">2/7-B-1</a>	01.03.1979	11.09.1980	PRODUCTION	OIL
<a href="#">2/7-B-1 A</a>	28.02.1989	17.06.1989	PRODUCTION	OIL
<a href="#">2/7-B-1 B</a>	10.12.1996	03.02.1997	PRODUCTION	OIL
<a href="#">2/7-B-1 C</a>	25.06.2001	20.07.2001	PRODUCTION	OIL
<a href="#">2/7-B-1 D</a>	16.08.2010	21.12.2010	PRODUCTION	OIL
<a href="#">2/7-B-2</a>	21.11.1987	18.01.1988	PRODUCTION	OIL
<a href="#">2/7-B-2 A</a>	30.10.1992	26.12.1992	PRODUCTION	OIL
<a href="#">2/7-B-2 B</a>	24.07.2000	01.09.2000	PRODUCTION	OIL
<a href="#">2/7-B-3</a>	24.03.1979	17.08.1985	PRODUCTION	OIL
<a href="#">2/7-B-3 A</a>	29.09.1991	10.11.1991	PRODUCTION	OIL
<a href="#">2/7-B-4</a>	07.11.1988	15.12.1988	PRODUCTION	OIL
<a href="#">2/7-B-4 A</a>	14.12.2001	02.02.2002	PRODUCTION	OIL
<a href="#">2/7-B-4 B</a>	15.05.2005	14.06.2005	PRODUCTION	OIL
<a href="#">2/7-B-5</a>	27.02.1979	20.12.1983	PRODUCTION	OIL
<a href="#">2/7-B-5 A</a>	06.07.1986	04.08.1986	PRODUCTION	OIL
<a href="#">2/7-B-5 B</a>	03.09.1997	30.10.1997	OBSERVATION	NOT APPLICABLE
<a href="#">2/7-B-5 C</a>	01.11.1997	15.11.1997	PRODUCTION	OIL
<a href="#">2/7-B-6</a>	29.09.1980	26.04.1981	PRODUCTION	OIL
<a href="#">2/7-B-6 A</a>	05.01.2001	25.02.2001	PRODUCTION	OIL
<a href="#">2/7-B-7</a>	10.05.1981	05.07.1981	PRODUCTION	OIL
<a href="#">2/7-B-7 A</a>	02.02.1992	23.03.1992	PRODUCTION	OIL
<a href="#">2/7-B-7 B</a>	24.05.2000	01.07.2000	PRODUCTION	OIL
<a href="#">2/7-B-8</a>	23.10.1989	03.12.1989	PRODUCTION	OIL
<a href="#">2/7-B-8 A</a>	10.06.1994	22.07.1994	PRODUCTION	OIL
<a href="#">2/7-B-8 B</a>	30.10.2009	11.01.2010	INJECTION	WATER
<a href="#">2/7-B-9</a>	06.07.1981	06.08.1981	PRODUCTION	OIL
<a href="#">2/7-B-9 A</a>	21.06.1993	21.08.1993	PRODUCTION	OIL
<a href="#">2/7-B-10</a>	08.10.1979	09.01.1980	PRODUCTION	OIL
<a href="#">2/7-B-10 A</a>	14.10.1986	27.10.1986	PRODUCTION	OIL
<a href="#">2/7-B-10 B</a>	15.03.1987	01.05.1987	PRODUCTION	OIL
<a href="#">2/7-B-10 C</a>	29.01.1993	30.03.1993	PRODUCTION	OIL
<a href="#">2/7-B-11</a>	20.04.1979	05.06.1979	PRODUCTION	OIL
<a href="#">2/7-B-11 A</a>	17.06.1991	01.08.1991	PRODUCTION	OIL
<a href="#">2/7-B-11 B</a>	07.10.2000	21.11.2000	PRODUCTION	OIL
<a href="#">2/7-B-12</a>	04.07.1979	15.05.1982	PRODUCTION	OIL
<a href="#">2/7-B-12 A</a>	27.09.1993	02.11.1993	PRODUCTION	OIL
<a href="#">2/7-B-12 B</a>	23.03.2001	25.08.2001	PRODUCTION	OIL
<a href="#">2/7-B-12 C</a>	06.11.2003	22.12.2003	PRODUCTION	OIL
<a href="#">2/7-B-13</a>	03.08.1984	12.10.1984	PRODUCTION	OIL
<a href="#">2/7-B-13 A</a>	04.04.1988	25.05.1988	PRODUCTION	OIL
<a href="#">2/7-B-13 B</a>	05.02.2000	19.03.2000	INJECTION	WATER



# NPD Factpages

## Field

Printed: 22.10.2020 - 08:14

OLJEDIREKTORATET

<a href="#">2/7-B-14</a>	12.03.1979	03.08.1979	PRODUCTION	OIL
<a href="#">2/7-B-14 A</a>	23.07.1987	23.08.1987	PRODUCTION	OIL
<a href="#">2/7-B-14 B</a>	23.03.1997	08.06.1997	PRODUCTION	OIL
<a href="#">2/7-B-14 C</a>	09.06.1997	19.06.1997	PRODUCTION	OIL
<a href="#">2/7-B-15</a>	04.07.1989	04.09.1989	PRODUCTION	OIL
<a href="#">2/7-B-15 A</a>	04.10.1994	12.11.1994	INJECTION	WATER
<a href="#">2/7-B-16</a>	06.09.1988	15.10.1988	PRODUCTION	OIL
<a href="#">2/7-B-16 A</a>	18.10.2006	22.01.2007	PRODUCTION	OIL
<a href="#">2/7-B-17</a>	24.05.1984	11.07.1984	PRODUCTION	OIL
<a href="#">2/7-B-17 A</a>	14.06.1996	01.09.1996	PRODUCTION	OIL
<a href="#">2/7-B-17 B</a>	02.09.1996	24.09.1996	PRODUCTION	OIL
<a href="#">2/7-B-18</a>	14.03.1979	09.03.1980	PRODUCTION	OIL
<a href="#">2/7-B-18 A</a>	01.12.1986	06.01.1987	PRODUCTION	OIL
<a href="#">2/7-B-18 B</a>	08.02.2004	05.04.2004	PRODUCTION	OIL
<a href="#">2/7-B-19</a>	17.03.1979	18.09.1979	PRODUCTION	OIL
<a href="#">2/7-B-19 A</a>	22.01.1994	11.03.1994	PRODUCTION	OIL
<a href="#">2/7-B-19 B</a>	31.01.2006	19.03.2006	PRODUCTION	OIL
<a href="#">2/7-B-20</a>	04.03.1983	12.05.1983	PRODUCTION	OIL
<a href="#">2/7-B-20 A</a>	23.09.2001	04.11.2001	INJECTION	WATER
<a href="#">2/7-B-20 B</a>	04.02.2005	27.03.2005	INJECTION	WATER
<a href="#">2/7-B-21</a>	30.11.2008	12.05.2009	PRODUCTION	OIL
<a href="#">2/7-B-22</a>	13.11.2009	26.03.2010	INJECTION	WATER
<a href="#">2/7-S-1</a>	16.01.2018	15.02.2018	PRODUCTION	OIL
<a href="#">2/7-S-2</a>	19.04.2017	25.05.2017	INJECTION	WATER
<a href="#">2/7-S-3</a>	04.01.2017	27.01.2017	PRODUCTION	OIL
<a href="#">2/7-S-4</a>	15.11.2015	20.12.2015	PRODUCTION	OIL
<a href="#">2/7-S-5</a>	18.09.2017	05.11.2017	PRODUCTION	OIL
<a href="#">2/7-S-6</a>	20.06.2015	23.09.2015	PRODUCTION	NOT APPLICABLE
<a href="#">2/7-S-6 A</a>	06.07.2017	30.07.2017	PRODUCTION	OIL
<a href="#">2/7-S-7</a>	07.08.2013	03.09.2013	INJECTION	WATER
<a href="#">2/7-S-8</a>	30.11.2013	02.01.2014	PRODUCTION	OIL
<a href="#">2/7-S-9</a>	28.02.2014	30.11.2014	PRODUCTION	OIL
<a href="#">2/7-S-10</a>	28.07.2016	30.08.2016	PRODUCTION	OIL
<a href="#">2/7-S-11</a>	14.06.2020	17.07.2020	PRODUCTION	OIL
<a href="#">2/7-S-12</a>	18.05.2018	16.06.2018	INJECTION	WATER
<a href="#">2/7-S-13</a>	29.09.2013	23.11.2013	PRODUCTION	OIL
<a href="#">2/7-S-14</a>	20.01.2014	18.02.2014	PRODUCTION	OIL
<a href="#">2/7-S-15</a>	27.09.2015	02.11.2015	PRODUCTION	OIL
<a href="#">2/7-S-16</a>	10.05.2019	26.06.2019	PRODUCTION	OIL
<a href="#">2/7-S-16 Y2</a>	07.06.2019	08.06.2019	PRODUCTION	OIL/GAS
<a href="#">2/7-S-16 Y3</a>			PRODUCTION	
<a href="#">2/7-S-16 Y4</a>			PRODUCTION	



## Field

OLJEDIREKTORATET

<a href="#">2/7-S-17</a>	05.01.2016	03.02.2016	INJECTION	WATER
<a href="#">2/7-S-18</a>	22.11.2016	25.12.2016	INJECTION	WATER
<a href="#">2/7-S-19</a>	26.07.2020	29.08.2020	PRODUCTION	OIL/GAS
<a href="#">2/7-S-20</a>			PRODUCTION	
<a href="#">2/7-S-21</a>	10.01.2015	22.03.2015	PRODUCTION	OIL
<a href="#">2/7-S-22</a>	05.09.2020	10.10.2020	INJECTION	WATER
<a href="#">2/7-S-23 Y1</a>	31.10.2019	23.01.2020	PRODUCTION	OIL/GAS
<a href="#">2/7-S-23 Y2</a>	24.01.2020	31.01.2020	PRODUCTION	OIL/GAS
<a href="#">2/7-S-24</a>	13.04.2020	05.06.2020	PRODUCTION	OIL/GAS
<a href="#">2/7-S-25</a>	21.03.2019	01.05.2019	PRODUCTION	OIL
<a href="#">2/7-S-26</a>	20.02.2016	08.11.2016	PRODUCTION	OIL
<a href="#">2/7-S-27</a>			PRODUCTION	
<a href="#">2/7-S-28</a>			INJECTION	
<a href="#">2/7-S-29</a>			PRODUCTION	NOT APPLICABLE
<a href="#">2/7-S-30</a>	23.02.2020	01.04.2020	PRODUCTION	OIL/GAS
<a href="#">2/7-S-30 A</a>			PRODUCTION	
<a href="#">2/7-S-31</a>	06.02.2017	28.03.2017	PRODUCTION	OIL
<a href="#">2/7-S-32</a>			INJECTION	
<a href="#">2/7-S-33</a>	30.03.2018	13.09.2019	INJECTION	WATER
<a href="#">2/7-S-34</a>	13.05.2015	31.07.2015	PRODUCTION	OIL
<a href="#">2/7-S-35</a>	25.09.2019	21.10.2019	PRODUCTION	OIL/GAS
<a href="#">2/7-S-35 A</a>			PRODUCTION	
<a href="#">2/7-S-36</a>	27.04.2016	26.06.2016	PRODUCTION	OIL
<a href="#">2/7-S-37</a>	15.11.2017	02.01.2018	INJECTION	WATER
<a href="#">2/7-S-38</a>	10.08.2017	08.09.2017	INJECTION	WATER
<a href="#">2/7-S-39</a>	27.02.2018	22.03.2018	PRODUCTION	OIL
<a href="#">2/7-S-40</a>	30.01.2019	10.03.2019	PRODUCTION	OIL
<a href="#">2/7-S-40 A</a>			PRODUCTION	
<a href="#">2/7-S-40 Y2</a>			PRODUCTION	
<a href="#">2/7-S-40 Y3</a>			PRODUCTION	

## Wellbores - other

Wellbore name	Entered date	Completed date	Purpose	Status
<a href="#">2/7-U-11</a>	01.08.2008	01.08.2008	SOIL DRILLING	P&A
<a href="#">2/7-U-12</a>	18.07.2008	18.07.2008	SOIL DRILLING	P&A
<a href="#">2/7-U-13</a>	02.08.2008	02.08.2008	SOIL DRILLING	P&A
<a href="#">2/7-U-14</a>	10.08.2008	10.08.2008	SOIL DRILLING	P&A
<a href="#">2/7-U-15</a>	22.07.2008	22.07.2008	SOIL DRILLING	P&A



# NPD Factpages

## Field

Printed: 22.10.2020 - 08:14

<a href="#">2/7-U-16</a>	15.07.2008	15.07.2008	SOIL DRILLING	P&A
<a href="#">2/7-U-17</a>	19.07.2008	19.07.2008	SOIL DRILLING	P&A
<a href="#">2/7-U-18</a>	14.07.2008	14.07.2008	SOIL DRILLING	P&A
<a href="#">2/7-U-19</a>	16.07.2008	16.07.2008	SOIL DRILLING	P&A
<a href="#">2/7-U-20</a>	06.06.2009	06.06.2009	SOIL DRILLING	P&A
<a href="#">2/7-U-21</a>	02.06.2009	02.06.2009	SOIL DRILLING	P&A
<a href="#">2/7-U-23</a>	06.06.2009	07.06.2009	SOIL DRILLING	P&A
<a href="#">2/7-U-24</a>	02.06.2009	02.06.2009	SOIL DRILLING	P&A
<a href="#">2/7-U-25</a>	02.06.2009	04.06.2009	SOIL DRILLING	P&A
<a href="#">2/7-U-26</a>	07.06.2009	07.06.2009	SOIL DRILLING	P&A
<a href="#">2/7-U-27</a>	08.06.2009	08.06.2009	SOIL DRILLING	P&A
<a href="#">2/7-U-28</a>	09.06.2009	09.06.2009	SOIL DRILLING	P&A
<a href="#">2/7-U-29</a>	09.06.2009	09.06.2009	SOIL DRILLING	P&A
<a href="#">2/7-U-30</a>	10.06.2009	10.06.2009	SOIL DRILLING	P&A
<a href="#">2/7-U-38</a>	21.11.2012	22.11.2012	SOIL DRILLING	P&A
<a href="#">2/7-U-39</a>	23.11.2012	24.11.2012	SOIL DRILLING	P&A
<a href="#">2/7-U-40</a>	24.11.2012	24.11.2012	SOIL DRILLING	P&A
<a href="#">2/7-U-41</a>	24.11.2012	25.11.2012	SOIL DRILLING	P&A
<a href="#">2/7-U-42</a>	26.11.2012	26.11.2012	SOIL DRILLING	P&A
<a href="#">2/7-U-43</a>	26.11.2012	27.11.2012	SOIL DRILLING	P&A
<a href="#">2/7-U-44</a>	27.11.2012	28.11.2012	SOIL DRILLING	P&A
<a href="#">2/7-U-45</a>	28.11.2012	28.11.2012	SOIL DRILLING	P&A
<a href="#">2/7-U-46</a>	28.11.2012	29.11.2012	SOIL DRILLING	P&A
<a href="#">2/7-U-47</a>	29.11.2012	29.11.2012	SOIL DRILLING	P&A
<a href="#">2/7-U-48</a>	29.11.2012	29.11.2012	SOIL DRILLING	P&A