

General information

Field name	VALHALL
Factmaps in new window	link
Current activity status	Producing
Discovery wellbore	2/8-6
Discovery year.	1975
Main area	North Sea
Main supply base	Tananger
NPDID field	43548

Picture

Discoveries included

Discovery name
2/8-6 Valhall

Activity status - history

Status	Status from	Status to
Producing	02.10.1982	
Approved for production	02.06.1977	01.10.1982

Located in

Block name	Prod. licence
2/8	006 B
2/11	033 B

Owner - current

Owner kind	Owner name
BUSINESS ARRANGEMENT AREA	VALHALL UNIT

Operatorship - current

Company name
Aker BP ASA

Licenseses - current



Company name	Nation code	Company share [%]
Aker BP ASA	NO	90.000000
Pandion Energy AS	NO	10.000000

The NPD estimate for reserves (Norwegian share)

Valid date: 31.12.2019

Orig. recoverable oil [mill Sm3]	Orig. recoverable gas [bill Sm3]	Orig. recoverable NGL [mill tonn]	Orig. recoverable cond. [mill Sm3]	Orig. recoverable oil eq. [mill Sm3 o.e]
159.25	30.28	5.70	0.00	200.36

Remaining oil [mill Sm3]	Remaining gas [bill Sm3]	Remaining NGL [mill tonn]	Remaining cond. [mill Sm3]	Remaining oil eq. [mill Sm3 o.e]
41.49	7.36	1.01	0.00	50.77

Orig. inplace oil [mill Sm3]	Orig. inplace ass. liquid [mill Sm3]	Orig. inplace ass. gas [bill Sm3]	Orig. inplace free gas [bill Sm3]
435.00	20.00	77.00	0.00

Description

Type	Text	Date updated
Development	Valhall is a field in the southern part of the Norwegian sector in the North Sea. The water depth is 70 metres. Valhall was discovered in 1975, and the initial plan for development and operation (PDO) was approved in 1977. The field was originally developed with three facilities for accommodation (QP), drilling (DP), and processing and compression (PCP). Production started in 1982. A PDO for a wellhead facility (WP) was approved in 1995 and for a water injection platform (IP) in 2000. Bridges connect the platforms. A PDO for two wellhead platforms on the northern and southern flanks was approved in 2001. A PDO for Valhall Redevelopment was approved in 2007. The plan included an accommodation and processing platform (PH) to replace aging facilities on the field. The PH-platform is supplied with power from shore. A PDO for Valhall Flank West was approved in 2018. It includes a normally unmanned wellhead platform.	27.02.2020
Reservoir	Valhall produces oil from chalk in the Upper Cretaceous Hod and Tor Formations. Reservoir depth is 2,400 metres. The Tor Formation chalk is fine-grained and has good reservoir quality. Considerable fracturing allows oil and water to flow more easily than in the underlying Hod Formation.	16.03.2018



Recovery	The field was initially produced with pressure depletion and compaction drive. Water injection in the centre of the field started in 2004. Chalk compaction as a result of pressure depletion and water weakening has led to seabed subsidence. Gas lift is used to optimise production in most of the production wells.	11.04.2017
Transport	Oil and NGL (Natural Gas Liquids) are routed via pipeline to the Ekofisk field and further to Teesside in the UK. Gas is sent via Norpipe to Emden in Germany.	25.04.2019
Status	The Valhall field has produced more than one billion barrels of oil equivalents, which is three times more than the PDO estimates. A long-term strategy for the field has recently been developed. Several wells were drilled in 2019, and drilling will continue in the foreseeable future. Valhall Flank West has been developed and production started from the facility in December 2019. Decommissioning plans have been submitted for the QP, PCP and DP facilities. Plugging and abandonment of wells is ongoing on the DP facility.	26.02.2020

Investments (expected)

Future investments from 2019 [mill NOK 2019-kroner] : 19747

Investments (historical)

	Investments [mill NOK nominal values]
Sum	80058
2018	3927
2017	1638
2016	246
2015	857
2014	2143
2013	3567
2012	6170
2011	4866
2010	7063
2009	8141
2008	6445
2007	3642
2006	1956
2005	1782
2004	1837
2003	3837
2002	3814
2001	3620
2000	1483
1999	829
1998	1471



1997	1470
1996	1109
1995	474
1994	212
1993	187
1992	299
1991	161
1990	93
1989	102
1988	232
1987	26
1986	269
1985	373
1984	356
1983	380
1982	1270
1981	1282
1980	1203
1979	807
1978	264
1977	156

Production , saleable



NPD Factpages

Field

Printed: 30.10.2020 - 08:18

	Month	Net - oil [mill Sm3]	Net - gas [bill Sm3]	Net - condensate [mill Sm3]	Net - NGL [mill Sm3]	Net - oil equivalents [mill Sm3]
Sum		121.680158	23.185418	0.000000	7.237589	152.103165
2020		1.705233	0.266158	0.000000	0.077946	2.049337
2019		2.045916	0.314656	0.000000	0.098859	2.459431
2018		1.862756	0.308055	0.000000	0.087951	2.258762
2017		1.769424	0.305186	0.000000	0.084986	2.159596
2016		1.997018	0.370142	0.000000	0.099626	2.466786
2015		2.402788	0.436287	0.000000	0.123347	2.962422
2014		2.225157	0.381262	0.000000	0.114809	2.721228
2013		1.768320	0.237091	0.000000	0.075787	2.081198
2012		0.963898	0.134220	0.000000	0.043472	1.141590
2011		1.642276	0.249556	0.000000	0.074233	1.966065
2010		2.090180	0.338291	0.000000	0.103830	2.532301
2009		2.265921	0.349154	0.000000	0.111566	2.726641
2008		2.810897	0.485877	0.000000	0.144120	3.440894
2007		3.411159	0.608351	0.000000	0.165978	4.185488
2006		4.041168	0.772453	0.000000	0.210128	5.023749
2005		4.829780	0.956485	0.000000	0.232096	6.018361
2004		4.772630	0.967659	0.000000	0.233984	5.974273
2003		4.155164	0.632243	0.000000	0.197092	4.984499
2002		4.180522	0.875037	0.000000	0.199655	5.255214
2001		4.362804	0.882334	0.000000	0.212904	5.458042
2000		4.577951	0.889374	0.000000	0.221597	5.688922
1999		5.310248	1.036055	0.000000	0.258336	6.604639
1998		5.168462	0.964830	0.000000	0.241490	6.374782
1997		4.526867	0.940399	0.000000	0.251212	5.718478
1996		4.034600	0.880080	0.000000	0.226624	5.141304
1995		3.489873	0.787530	0.000000	0.190653	4.468056
1994		3.154878	0.667406	0.000000	0.165459	3.987743
1993		3.536684	0.799865	0.000000	0.190539	4.527088
1992		4.046269	0.927589	0.000000	0.228374	5.202232
1991		3.744195	0.818378	0.000000	0.248815	4.811388
1990		4.156492	0.918810	0.000000	0.375098	5.450400
1989		4.238787	0.841652	0.000000	0.376097	5.456536
1988		3.698722	0.709489	0.000000	0.334486	4.742697
1987		3.478145	0.621839	0.000000	0.335952	4.435936
1986		2.538380	0.429565	0.000000	0.277149	3.245094
1985		2.781179	0.468009	0.000000	0.312955	3.562143
1984		2.843319	0.512731	0.000000	0.241653	3.597703
1983		0.966687	0.101320	0.000000	0.066671	1.134678
1982		0.085409	0.000000	0.000000	0.002060	0.087469



NPD Factpages

Field

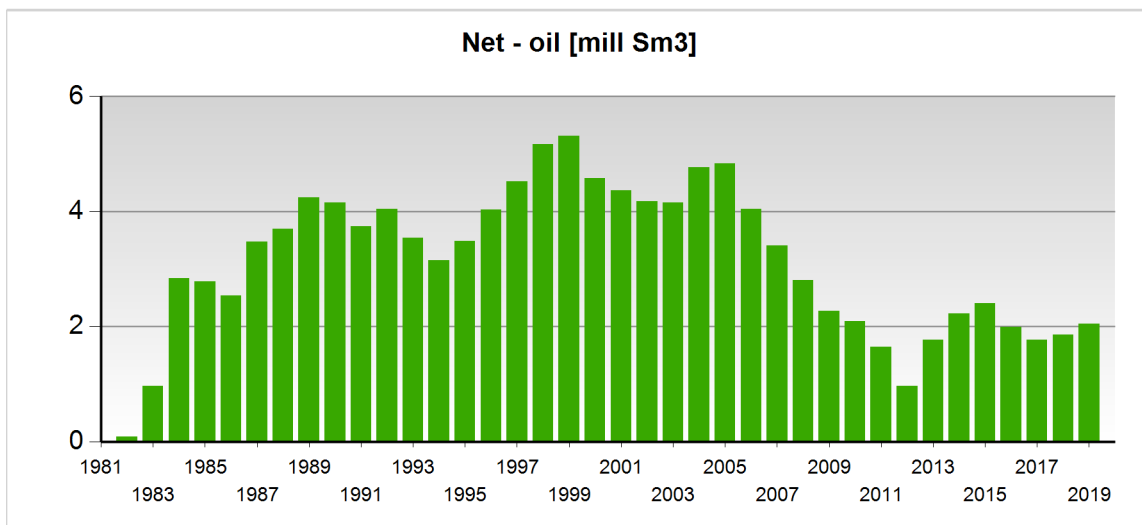
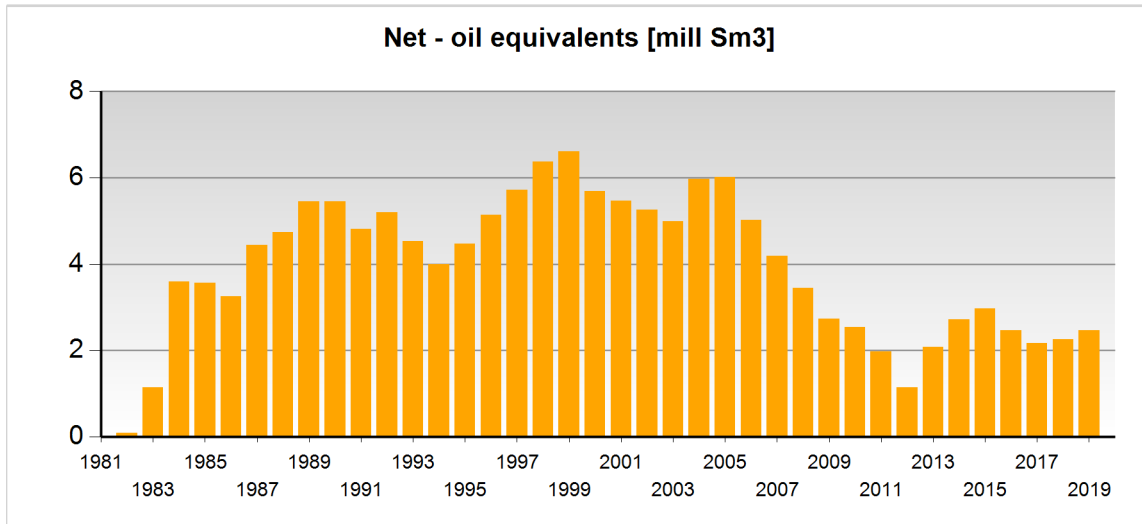
Printed: 30.10.2020 - 08:18

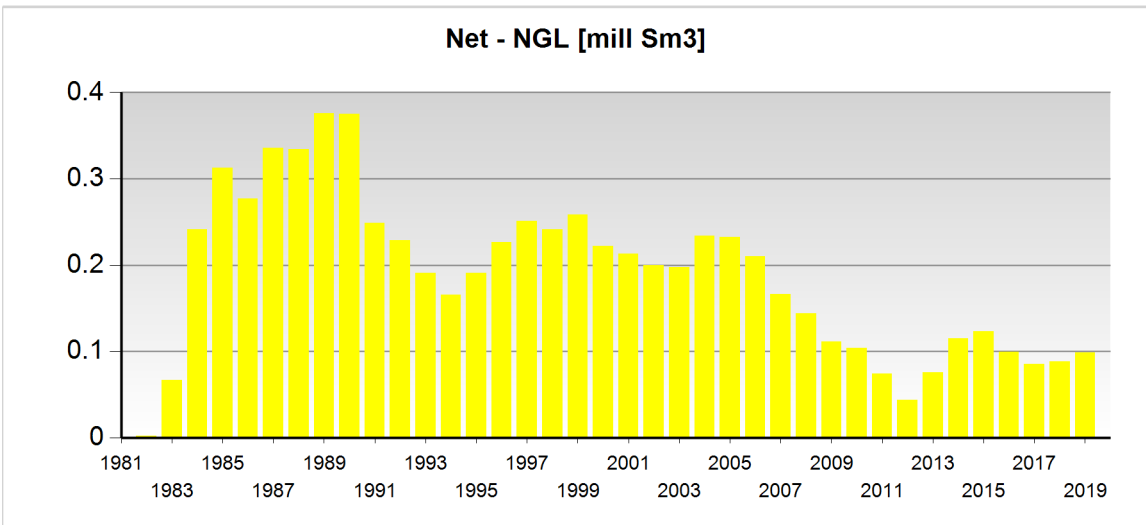
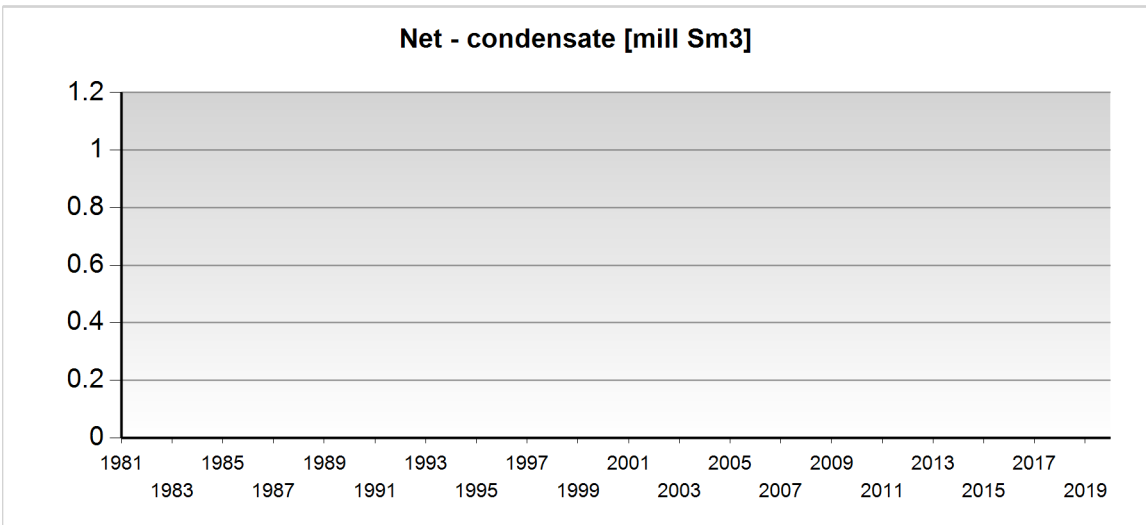
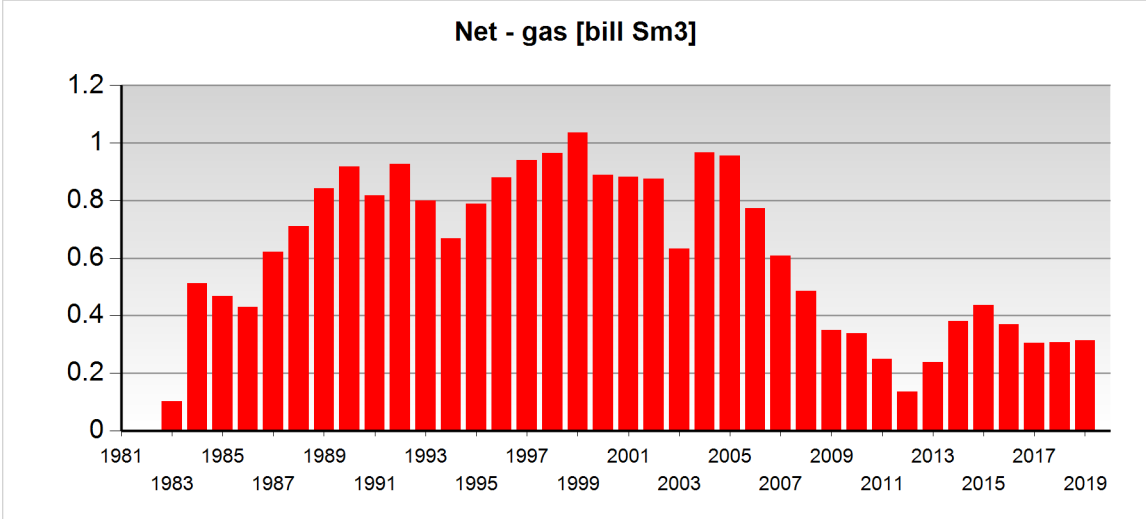
OLJEDIREKTORATET

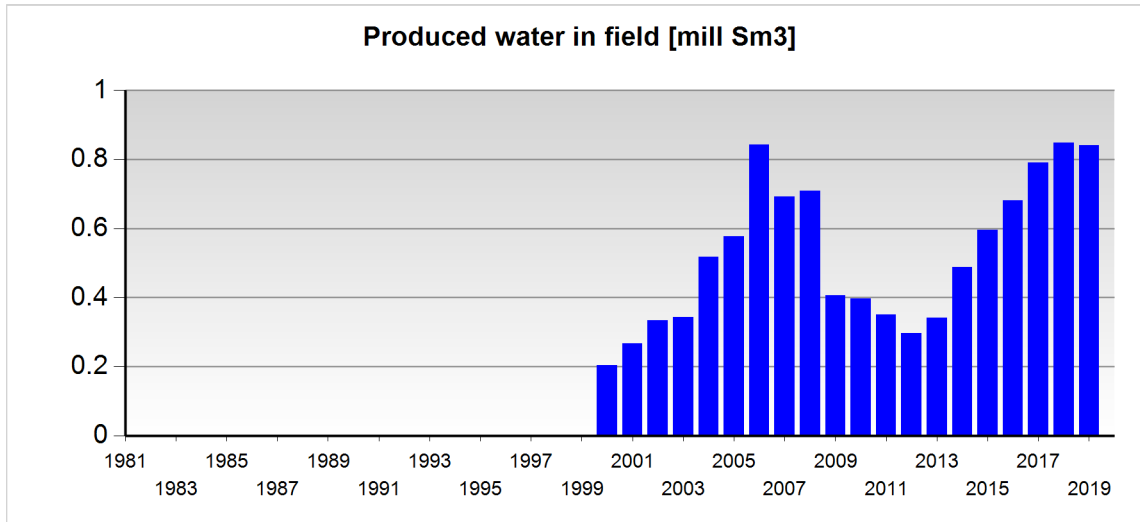
Production , sum wellbores

	Month	Gross - oil [mill Sm3]	Gross - gas [bill Sm3]	Gross - condensate [mill Sm3]	Gross - oil equivalents [mill Sm3]
Sum		124.425373	27.602818	0.000000	152.028191
2020		1.655177	0.322731	0.000000	1.977908
2019		1.978421	0.383393	0.000000	2.361814
2018		1.792917	0.370839	0.000000	2.163756
2017		1.702955	0.364073	0.000000	2.067028
2016		1.922898	0.440293	0.000000	2.363191
2015		2.298008	0.523266	0.000000	2.821274
2014		2.132299	0.461254	0.000000	2.593553
2013		1.709616	0.319893	0.000000	2.029509
2012		0.933096	0.206385	0.000000	1.139481
2011		1.582693	0.366162	0.000000	1.948855
2010		2.025685	0.484655	0.000000	2.510340
2009		2.201829	0.483844	0.000000	2.685673
2008		2.767937	0.649451	0.000000	3.417388
2007		3.432316	0.811624	0.000000	4.243940
2006		4.051338	0.989420	0.000000	5.040758
2005		4.729288	1.155858	0.000000	5.885146
2004		4.677718	1.159641	0.000000	5.837359
2003		4.075083	1.103371	0.000000	5.178454
2002		4.107943	1.088875	0.000000	5.196818
2001		4.303686	1.108302	0.000000	5.411988
2000		4.497415	1.107611	0.000000	5.605026
1999		5.599752	1.084667	0.000000	6.684419
1998		5.440342	1.023241	0.000000	6.463583
1997		4.865239	1.006671	0.000000	5.871910
1996		4.241316	0.936924	0.000000	5.178240
1995		3.661432	0.845184	0.000000	4.506616
1994		3.309156	0.721701	0.000000	4.030857
1993		3.699218	0.844957	0.000000	4.544175
1992		4.230677	0.973072	0.000000	5.203749
1991		3.935877	0.875703	0.000000	4.811580
1990		4.491225	0.996696	0.000000	5.487921
1989		4.574407	0.917468	0.000000	5.491875
1988		4.014561	0.802081	0.000000	4.816642
1987		3.788829	0.716244	0.000000	4.505073
1986		2.784469	0.495933	0.000000	3.280402
1985		3.052954	0.591234	0.000000	3.644188
1984		3.049137	0.635411	0.000000	3.684548
1983		1.021581	0.217137	0.000000	1.238718
1982		0.086883	0.017553	0.000000	0.104436

Production - charts







Any produced water is only included after 1.1.2000

Wellbores - exploration

Wellbore name	Entered date	Completed date	Purpose	Status	Content
2/8-4	28.04.1973	07.06.1973	APPRAISAL	P&A	OIL
2/8-6	07.04.1975	30.06.1975	WILDCAT	P&A	OIL
2/8-8	10.11.1975	15.03.1976	APPRAISAL	P&A	OIL
2/8-9	09.04.1976	27.06.1976	APPRAISAL	P&A	OIL
2/8-10	30.06.1976	29.08.1976	APPRAISAL	P&A	OIL
2/8-11	10.08.1976	11.10.1976	APPRAISAL	P&A	OIL
2/11-1	14.07.1969	03.10.1969	APPRAISAL	P&A	OIL
2/11-4	20.03.1978	18.05.1978	APPRAISAL	P&A	OIL

Wellbores - development

Wellbore name	Entered date	Completed date	Purpose	Content
2/8-A-1	21.12.1981	30.07.1982	PRODUCTION	OIL
2/8-A-1 A	08.10.1993	05.11.1993	PRODUCTION	OIL
2/8-A-2	29.11.1981	11.07.1982	PRODUCTION	OIL
2/8-A-2 A	09.07.1995	25.07.1995	PRODUCTION	OIL
2/8-A-3	15.10.1982	29.11.1982	PRODUCTION	OIL
2/8-A-3 A	15.11.1986	09.12.1986	PRODUCTION	OIL
2/8-A-3 B	29.11.1996	17.12.1996	PRODUCTION	OIL
2/8-A-3 C	08.09.1998	19.04.1999	PRODUCTION	NOT APPLICABLE
2/8-A-3 D	30.12.1999	21.02.2000	PRODUCTION	OIL
2/8-A-4	17.12.1982	06.07.1984	PRODUCTION	OIL
2/8-A-4 A	12.09.1989	28.10.1989	PRODUCTION	OIL
2/8-A-4 B	13.05.1995	18.06.1995	PRODUCTION	OIL
2/8-A-5	03.04.1983	23.05.1983	PRODUCTION	OIL
2/8-A-5 A	04.01.1992	16.01.1992	PRODUCTION	OIL
2/8-A-5 B	24.10.1997	11.12.1997	PRODUCTION	OIL



2/8-A-6	19.07.1983	05.09.1983	PRODUCTION	OIL
2/8-A-6 A	09.06.1998	18.07.1998	PRODUCTION	OIL
2/8-A-7	24.08.1983	25.09.1983	PRODUCTION	OIL
2/8-A-7 A	14.11.1988	05.12.1988	PRODUCTION	OIL
2/8-A-7 B	03.02.1994	25.04.1994	PRODUCTION	OIL
2/8-A-8	15.10.1983	18.11.1983	PRODUCTION	OIL
2/8-A-8 A	26.08.1995	09.09.1995	PRODUCTION	OIL
2/8-A-8 B	15.11.2003	29.12.2003	PRODUCTION	NOT APPLICABLE
2/8-A-8 C	27.01.2004	05.03.2004	PRODUCTION	NOT APPLICABLE
2/8-A-9	20.11.1983	03.01.1984	PRODUCTION	OIL
2/8-A-9 A	27.07.1997	20.08.1997	PRODUCTION	OIL
2/8-A-10	18.01.1984	25.02.1984	PRODUCTION	OIL
2/8-A-10 A	15.02.1988	06.03.1988	PRODUCTION	OIL
2/8-A-10 B	22.09.1993	19.12.1993	PRODUCTION	OIL
2/8-A-11	19.03.1984	09.05.1984	PRODUCTION	OIL
2/8-A-11 A	19.06.1986	05.07.1986	PRODUCTION	OIL
2/8-A-11 B	26.08.2002	07.11.2002	PRODUCTION	OIL
2/8-A-12	13.07.1984	17.09.1984	PRODUCTION	OIL
2/8-A-12 A	14.11.1984	27.11.1984	PRODUCTION	OIL
2/8-A-12 B	02.12.1990	07.03.1991	PRODUCTION	OIL
2/8-A-12 C	19.03.2003	25.05.2003	PRODUCTION	OIL
2/8-A-13	23.05.1984	13.06.1984	PRODUCTION	OIL
2/8-A-13 A	19.01.1987	31.01.1987	PRODUCTION	OIL
2/8-A-13 B	17.05.1987	04.06.1987	PRODUCTION	OIL
2/8-A-13 C	15.08.2003	23.09.2003	INJECTION	CUTTINGS
2/8-A-14	07.12.1984	01.01.1985	PRODUCTION	OIL
2/8-A-14 A	15.01.1989	26.01.1989	PRODUCTION	OIL
2/8-A-14 B	09.05.1992	09.07.1992	PRODUCTION	OIL
2/8-A-15	09.01.1985	28.01.1985	PRODUCTION	OIL
2/8-A-15 A	11.02.1987	03.03.1987	PRODUCTION	OIL
2/8-A-16	07.02.1985	08.03.1985	PRODUCTION	OIL
2/8-A-16 A	29.04.1986	02.06.1986	PRODUCTION	OIL
2/8-A-16 B	21.06.1990	10.07.1990	PRODUCTION	OIL
2/8-A-16 C	05.10.1991	03.12.1991	PRODUCTION	OIL
2/8-A-16 D	03.11.1994	07.12.1994	PRODUCTION	OIL
2/8-A-16 E	30.10.2001	29.01.2002	PRODUCTION	OIL
2/8-A-17	15.03.1985	12.04.1985	PRODUCTION	OIL
2/8-A-18	02.05.1985	26.06.1985	PRODUCTION	OIL
2/8-A-18 A	13.08.1986	26.09.1986	PRODUCTION	OIL
2/8-A-18 B	20.02.1989	06.03.1989	PRODUCTION	OIL
2/8-A-19	26.07.1985	10.09.1985	PRODUCTION	OIL
2/8-A-19 A	19.01.1998	19.04.1998	PRODUCTION	OIL



NPD Factpages

Field

Printed: 30.10.2020 - 08:18

2/8-A-20	17.06.1988	30.07.1988	PRODUCTION	OIL
2/8-A-20 A	26.05.1989	09.06.1989	PRODUCTION	OIL
2/8-A-20 B	17.03.1997	27.04.1997	PRODUCTION	OIL
2/8-A-20 C	10.05.1997	30.05.1997	PRODUCTION	NOT APPLICABLE
2/8-A-20 D	31.05.1997	11.06.1997	INJECTION	CUTTINGS
2/8-A-21	08.02.1986	12.03.1986	PRODUCTION	NOT APPLICABLE
2/8-A-21 A	12.10.1986	21.10.1986	PRODUCTION	OIL
2/8-A-22	09.04.1989	05.05.1989	PRODUCTION	OIL
2/8-A-22 A	13.05.1999	28.06.1999	PRODUCTION	OIL
2/8-A-23	26.03.1988	12.05.1988	PRODUCTION	OIL
2/8-A-24	16.09.1988	24.10.1988	PRODUCTION	OIL
2/8-A-24 A	12.06.1993	03.07.1993	PRODUCTION	OIL
2/8-A-25	22.08.1990	07.07.1991	PRODUCTION	OIL
2/8-A-25 A	18.01.1995	13.02.1995	OBSERVATION	NOT APPLICABLE
2/8-A-25 B	30.03.1995	16.04.1995	INJECTION	CUTTINGS
2/8-A-26	02.02.1992	19.03.1992	PRODUCTION	OIL
2/8-A-26 A	18.03.1996	11.04.1996	PRODUCTION	OIL
2/8-A-27	27.08.1990	28.08.1991	PRODUCTION	OIL
2/8-A-28	02.07.1992	19.09.1992	PRODUCTION	OIL
2/8-A-29	18.08.1990	27.12.1992	PRODUCTION	OIL
2/8-A-30	29.01.1993	07.04.1993	PRODUCTION	OIL
2/8-A-30 A	21.06.1994	21.08.1994	PRODUCTION	NOT APPLICABLE
2/8-A-30 B	24.08.1994	12.09.1994	PRODUCTION	OIL
2/8-F-1	25.12.1995	26.01.1996	PRODUCTION	OIL
2/8-F-2	20.12.1995	10.03.1996	OBSERVATION	NOT APPLICABLE
2/8-F-2 A	12.03.1996	21.03.1996	PRODUCTION	OIL
2/8-F-3	13.12.1995	03.10.1996	PRODUCTION	OIL
2/8-F-3 A	14.03.2000	14.05.2000	PRODUCTION	NOT APPLICABLE
2/8-F-3 B	15.02.2002	05.04.2002	OBSERVATION	NOT APPLICABLE
2/8-F-3 C	06.04.2002	16.04.2002	PRODUCTION	OIL
2/8-F-4	11.07.1996	27.11.1996	PRODUCTION	OIL
2/8-F-5	27.06.2001	24.09.2001	PRODUCTION	OIL
2/8-F-6	07.12.1996	03.05.1997	PRODUCTION	OIL
2/8-F-7	13.05.1997	30.06.1997	PRODUCTION	OIL
2/8-F-8	17.07.1997	20.08.1997	PRODUCTION	OIL
2/8-F-9	01.02.1997	29.03.1997	PRODUCTION	GAS
2/8-F-9 A	05.04.2001	10.06.2001	PRODUCTION	OIL
2/8-F-10	24.02.1999	09.04.1999	PRODUCTION	OIL



NPD Factpages

Field

Printed: 30.10.2020 - 08:18

OLJEDIREKTORATET

2/8-F-11	08.01.1998	11.02.1998	PRODUCTION	OIL
2/8-F-11 A	19.12.2019	20.01.2020	PRODUCTION	OIL
2/8-F-12	21.02.1998	12.04.1998	PRODUCTION	OIL
2/8-F-13	30.05.1998	13.08.1998	PRODUCTION	NOT APPLICABLE
2/8-F-13 A	06.10.2001	22.01.2002	PRODUCTION	OIL
2/8-F-14	26.04.1998	16.05.1998	PRODUCTION	OIL
2/8-F-15	01.09.2000	19.02.2001	PRODUCTION	OIL
2/8-F-16	21.04.1999	18.06.1999	PRODUCTION	OIL
2/8-F-17	21.10.1997	28.12.1997	PRODUCTION	OIL
2/8-F-18	15.08.1998	25.01.1999	PRODUCTION	OIL
2/8-F-18 A	12.10.2019	22.11.2019	OBSERVATION	NOT APPLICABLE
2/8-F-18 B	24.11.2019	05.12.2019	INJECTION	WATER
2/8-F-19	25.05.2000	18.08.2000	PRODUCTION	OIL
2/8-G-1	21.09.2013	25.12.2013	PRODUCTION	OIL
2/8-G-2	15.08.2014	30.01.2015	PRODUCTION	OIL
2/8-G-3	19.01.2014	18.07.2014	PRODUCTION	OIL
2/8-G-4	30.04.2012	24.07.2012	PRODUCTION	OIL
2/8-G-5	28.01.2013	13.02.2013	OBSERVATION	NOT APPLICABLE
2/8-G-6	02.05.2008	04.07.2008	PRODUCTION	OIL
2/8-G-7	20.07.2008	08.01.2009	PRODUCTION	OIL
2/8-G-8	01.08.2006	07.08.2006	OBSERVATION	NOT APPLICABLE
2/8-G-8 A	24.12.2009	13.05.2010	PRODUCTION	OIL
2/8-G-9	10.03.2017	19.05.2017	PRODUCTION	OIL
2/8-G-10	11.03.2004	10.03.2005	OBSERVATION	NOT APPLICABLE
2/8-G-10 A	07.02.2019	09.03.2019	OBSERVATION	NOT APPLICABLE
2/8-G-10 B	13.03.2019	23.05.2019	PRODUCTION	OIL
2/8-G-11	20.03.2005	13.07.2005	PRODUCTION	OIL/GAS
2/8-G-11 A	03.09.2018	18.11.2018	PRODUCTION	OIL
2/8-G-12	14.10.2009	28.11.2009	INJECTION	WATER
2/8-G-13	20.09.2005	18.02.2007	PRODUCTION	OIL
2/8-G-14	08.12.2007	01.03.2008	INJECTION	WATER
2/8-G-15	27.03.2006	08.06.2006	PRODUCTION	OIL/GAS
2/8-G-16	31.01.2009	23.03.2009	OBSERVATION	NOT APPLICABLE
2/8-G-16 A	26.03.2009	30.03.2009	PRODUCTION	OIL
2/8-G-16 B	31.03.2009	20.07.2009	PRODUCTION	OIL
2/8-G-17	01.10.2017	07.01.2018	PRODUCTION	OIL
2/8-G-18	26.07.2005	22.12.2005	INJECTION	WATER
2/8-G-19	08.08.2009	29.09.2009	INJECTION	WATER



2/8-G-20		13.06.2011	OBSERVATION	
2/8-G-20 A	05.06.2017	06.09.2017	PRODUCTION	OIL
2/8-G-21	24.04.2011	01.05.2011	OBSERVATION	NOT APPLICABLE
2/8-G-21 A	04.05.2011	26.11.2011	INJECTION	CUTTINGS
2/8-G-22	13.03.2007	01.11.2007	INJECTION	WATER
2/8-G-22 A	09.03.2018	23.05.2018	PRODUCTION	OIL
2/8-G-23	28.02.2013	13.05.2013	INJECTION	WATER
2/8-G-24	28.08.2005	01.03.2006	INJECTION	WATER
2/8-N-1	18.01.2012	21.01.2012	PRODUCTION	OIL
2/8-N-1 A	07.03.2012	16.05.2012	PRODUCTION	OIL
2/8-N-1 B	21.05.2012	26.08.2012	PRODUCTION	OIL
2/8-N-2	09.08.2003	14.08.2003	OBSERVATION	NOT APPLICABLE
2/8-N-3	05.05.2006	11.05.2006	OBSERVATION	OIL
2/8-N-3 AY1	25.05.2006	07.09.2006	PRODUCTION	OIL
2/8-N-3 AY2			PRODUCTION	
2/8-N-4	16.10.2018	12.11.2018	INJECTION	WATER
2/8-N-5	12.06.2004	03.08.2004	PRODUCTION	OIL
2/8-N-6	20.06.2006	05.08.2006	PRODUCTION	OIL
2/8-N-7	22.05.2004	07.06.2004	PRODUCTION	OIL
2/8-N-8	24.11.2018	04.01.2019	PRODUCTION	OIL
2/8-N-9	22.04.2013	05.10.2013	PRODUCTION	OIL
2/8-N-10	21.11.2003	22.12.2003	PRODUCTION	OIL
2/8-N-11	03.04.2004	24.04.2004	PRODUCTION	OIL
2/8-N-12	29.12.2003	15.01.2004	OBSERVATION	NOT APPLICABLE
2/8-N-12 A	17.01.2004	20.02.2004	PRODUCTION	OIL
2/8-N-13	17.09.2003	26.09.2003	INJECTION	CUTTINGS
2/8-N-14	01.03.2004	25.03.2004	PRODUCTION	OIL
2/8-N-15	29.09.2003	27.10.2003	PRODUCTION	OIL
2/8-N-16	09.10.2012	01.04.2013	PRODUCTION	OIL
2/8-V-1			PRODUCTION	
2/8-V-2	10.02.2020	27.02.2020	PRODUCTION	OIL
2/8-V-2 Y2	28.02.2020	14.03.2020	PRODUCTION	OIL
2/8-V-3	08.11.2019	09.12.2019	PRODUCTION	OIL
2/8-V-4	04.05.2020	25.05.2020	PRODUCTION	OIL
2/8-V-4 Y2	26.05.2020	31.05.2020	PRODUCTION	OIL
2/8-V-5	24.12.2019	11.01.2020	PRODUCTION	OIL
2/8-V-6	29.08.2019	21.09.2019	PRODUCTION	OIL
2/8-V-7	17.01.2020	03.02.2020	PRODUCTION	OIL
2/8-V-8	28.09.2019	29.10.2019	PRODUCTION	OIL
2/8-V-9	31.07.2019	22.08.2019	PRODUCTION	OIL
2/8-V-10			PRODUCTION	



2/8-V-11			PRODUCTION	
2/8-V-12	27.03.2020	18.04.2020	PRODUCTION	OIL
2/8-V-12 Y2	19.04.2020	27.04.2020	PRODUCTION	OIL
2/11-S-1	30.08.2004	04.09.2004	OBSERVATION	NOT APPLICABLE
2/11-S-1 A	06.11.2005	04.12.2005	PRODUCTION	OIL
2/11-S-2	26.09.2005	30.10.2005	PRODUCTION	OIL
2/11-S-3	26.01.2005	24.04.2005	PRODUCTION	OIL
2/11-S-4 Y1	13.12.2005	17.01.2006	PRODUCTION	OIL
2/11-S-4 Y2	18.01.2006	17.02.2006	PRODUCTION	OIL
2/11-S-5	22.06.2005	09.08.2005	PRODUCTION	OIL
2/11-S-6	05.11.2002	10.11.2002	PRODUCTION	NOT APPLICABLE
2/11-S-6 A	31.01.2019	26.05.2019	PRODUCTION	OIL
2/11-S-7	05.05.2005	07.06.2005	PRODUCTION	OIL
2/11-S-8 Y1	27.02.2006	06.04.2006	PRODUCTION	OIL
2/11-S-8 Y2	07.04.2006	16.04.2006	PRODUCTION	OIL
2/11-S-9	10.03.2014	12.03.2014	OBSERVATION	NOT APPLICABLE
2/11-S-9 A	13.03.2014	30.05.2014	PRODUCTION	OIL
2/11-S-10	20.11.2004	18.09.2005	PRODUCTION	OIL
2/11-S-11	07.01.2003	01.02.2003	OBSERVATION	NOT APPLICABLE
2/11-S-11 A	02.02.2003	28.02.2003	PRODUCTION	OIL
2/11-S-12	16.05.2003	12.06.2003	PRODUCTION	OIL
2/11-S-13	06.12.2002	03.01.2003	INJECTION	CUTTINGS
2/11-S-14	10.03.2003	11.04.2003	OBSERVATION	NOT APPLICABLE
2/11-S-14 A	12.04.2003	08.05.2003	PRODUCTION	OIL
2/11-S-15	21.06.2003	20.07.2003	PRODUCTION	OIL
2/11-S-16	11.02.2019	06.03.2019	OBSERVATION	NOT APPLICABLE
2/11-S-16 A	07.03.2019	29.03.2019	PRODUCTION	OIL
2/11-S-16 B	04.04.2019	24.04.2019	PRODUCTION	OIL

Wellbores - other

Wellbore name	Entered date	Completed date	Purpose	Status
---------------	--------------	----------------	---------	--------