

General information

Field name	OSEBERG
Factmaps in new window	link
Current activity status	Producing
Discovery wellbore	30/6-1
Discovery year.	1979
Main area	North Sea
Main supply base	Mongstad
NPDID field	43625

Picture

Discoveries included

Discovery name
30/6-1 Oseberg
30/6-26 (Gamma Vest)
30/6-27
30/6-18 (Kappa)
30/6-9
30/6-15 Oseberg Vest
30/9-19
30/6-17 R
30/9-21 S
30/6-28 S
30/6-29 S (Alfa Nord Cook)
30/9-27 S (Parkes)

Activity status - history

Status	Status from	Status to
Producing	01.12.1988	
Approved for production	05.06.1984	30.11.1988

Located in

Block name	Prod. licence
30/6	053
30/9	079
30/9	104



Owner - current

Owner kind	Owner name
BUSINESS ARRANGEMENT AREA	OSEBERG AREA UNIT

Operatorship - current

Company name
Equinor Energy AS

Licensees - current

Company name	Nation code	Company share [%]
Equinor Energy AS	NO	49.300000
Petro AS	NO	33.600000
Total E&P Norge AS	NO	14.700000
ConocoPhillips Skandinavia AS	NO	2.400000

The NPD estimate for reserves (Norwegian share)

Valid date: 31.12.2019

Orig. recoverable oil [mill Sm3]	Orig. recoverable gas [bill Sm3]	Orig. recoverable NGL [mill tonn]	Orig. recoverable cond. [mill Sm3]	Orig. recoverable oil eq. [mill Sm3 o.e]
398.35	117.17	15.80	0.00	545.54

Remaining oil [mill Sm3]	Remaining gas [bill Sm3]	Remaining NGL [mill tonn]	Remaining cond. [mill Sm3]	Remaining oil eq. [mill Sm3 o.e]
13.93	62.66	4.56	0.00	85.25

Orig. inplace oil [mill Sm3]	Orig. inplace ass. liquid [mill Sm3]	Orig. inplace ass. gas [bill Sm3]	Orig. inplace free gas [bill Sm3]
676.00	36.00	93.00	116.48

Description



Type	Text	Date updated
Development	Oseberg is a field in the northern part of the North Sea. The water depth is 100 metres. Oseberg was discovered in 1979, and the plan for development and operation (PDO) was approved in 1984. The field was developed in multiple phases and production started in 1988. The Oseberg Field Centre in the south originally consisted of two facilities: the process and accommodation facility Oseberg A and the drilling and water injection facility Oseberg B. A PDO for Oseberg C was approved in 1988 and included an integrated production, drilling and quarters facility (PDQ) in the northern part of the field. A PDO for the gas phase was approved in 1996 and included a facility for gas processing, Oseberg D. A PDO for the western flank, Vestflanken, was approved in 2003 and included a subsea template tied-back to Oseberg B. A PDO for Oseberg Delta was approved in 2005 and included a subsea template tied-back to Oseberg D. A PDO for Oseberg Delta II was approved in 2013 and included two subsea templates tied-back to the Oseberg Field Centre. A PDO for Oseberg Vestflanken II was approved in 2016 and included an unmanned wellhead platform (UWP), Oseberg H, and new wells from the existing G4 template on the western flank. The Oseberg Øst, Oseberg Sør and Tune fields are tied to the Oseberg Field Centre.	14.02.2020
Reservoir	Oseberg produces oil and gas from sandstone of Middle Jurassic age in the Brent Group. The main reservoirs are in the Oseberg and Tarbert Formations, but there is also production from the Etive and Ness Formations. The reservoirs lie at a depth of 2,300-2,700 metres and have generally good reservoir quality. The field is divided into several structures. The satellite structures west of the main structure also produce from the Statfjord Group and Cook Formation.	25.02.2020
Recovery	The Oseberg field is produced by pressure maintenance using gas and water injection, as well as pressure depletion in some structures. Massive upflank gas injection in the main field has provided excellent oil displacement, and a large gas cap has developed. Injection gas was previously imported from Troll Øst (TOGI) and Oseberg Vest. Gas blowdown has gradually started in main parts of the field, while other parts are maintaining injection.	25.02.2020
Transport	The oil is transported through the Oseberg Transport System (OTS) to the Sture terminal. Gas export began in 2000. The gas is transported to the market via the Oseberg Gas Transport (OGT) pipeline to the Heimdal Gas Centre and further in the Statpipe-system to continental Europe, and via the Vesterled pipeline to the UK.	16.03.2018
Status	The strategy for the main Oseberg reservoirs is to balance oil production with increasing gas offtake. New production and injection wells are continuously being drilled to enhance oil recovery.	25.02.2020

Investments (expected)

Future investments from 2019 [mill NOK 2019-kroner] : 17387

Investments (historical)



	Investments [mill NOK nominal values]
Sum	98118
2018	3869
2017	5551
2016	4958
2015	5585
2014	4899
2013	4199
2012	2435
2011	2803
2010	3044
2009	2826
2008	2880
2007	2605
2006	2739
2005	2348
2004	829
2003	992
2002	1322
2001	568
2000	554
1999	1785
1998	1933
1997	1489
1996	867
1995	912
1994	958
1993	1086
1992	1089
1991	3060
1990	3943
1989	4500
1988	4777
1987	5662
1986	6749
1985	3411
1984	779
1983	112

Production , saleable



NPD Factpages

Field

Printed: 30.10.2020 - 08:51

	Month	Net - oil [mill Sm3]	Net - gas [bill Sm3]	Net - condensate [mill Sm3]	Net - NGL [mill Sm3]	Net - oil equivalents [mill Sm3]
Sum		386.038940	55.072844	0.000000	22.676273	463.788057
2020		2.518106	1.238669	0.000000	0.665576	4.422351
2019		3.320804	3.119836	0.000000	1.077451	7.518091
2018		2.568378	2.700778	0.000000	1.054526	6.323682
2017		3.489938	3.462576	0.000000	1.177791	8.130305
2016		3.489799	1.418380	0.000000	1.161621	6.069800
2015		3.036046	2.695234	0.000000	1.119618	6.850898
2014		2.731981	1.950130	0.000000	1.098368	5.780479
2013		2.998776	3.690016	0.000000	1.197539	7.886331
2012		3.310547	4.568561	0.000000	1.176477	9.055585
2011		3.913687	1.529918	0.000000	1.198949	6.642554
2010		4.309418	3.102971	0.000000	0.958897	8.371286
2009		5.125387	2.379680	0.000000	1.074853	8.579920
2008		5.292512	3.818438	0.000000	1.179027	10.289977
2007		5.163588	1.547516	0.000000	1.303025	8.014129
2006		6.261790	3.370074	0.000000	1.255171	10.887035
2005		7.466758	2.820909	0.000000	1.164678	11.452345
2004		8.713763	2.422904	0.000000	1.183984	12.320651
2003		9.175111	1.238797	0.000000	1.025059	11.438967
2002		10.112527	2.797595	0.000000	1.019130	13.929252
2001		10.970315	3.796675	0.000000	0.954909	15.721899
2000		15.410819	1.403187	0.000000	0.629624	17.443630
1999		19.435223	0.000000	0.000000	0.000000	19.435223
1998		24.101656	0.000000	0.000000	0.000000	24.101656
1997		27.268265	0.000000	0.000000	0.000000	27.268265
1996		29.126488	0.000000	0.000000	0.000000	29.126488
1995		28.985230	0.000000	0.000000	0.000000	28.985230
1994		29.211657	0.000000	0.000000	0.000000	29.211657
1993		28.462908	0.000000	0.000000	0.000000	28.462908
1992		26.104005	0.000000	0.000000	0.000000	26.104005
1991		20.915879	0.000000	0.000000	0.000000	20.915879
1990		17.308728	0.000000	0.000000	0.000000	17.308728
1989		13.514304	0.000000	0.000000	0.000000	13.514304
1988		1.125957	0.000000	0.000000	0.000000	1.125957
1987		0.807807	0.000000	0.000000	0.000000	0.807807
1986		0.290783	0.000000	0.000000	0.000000	0.290783

Production , sum wellbores

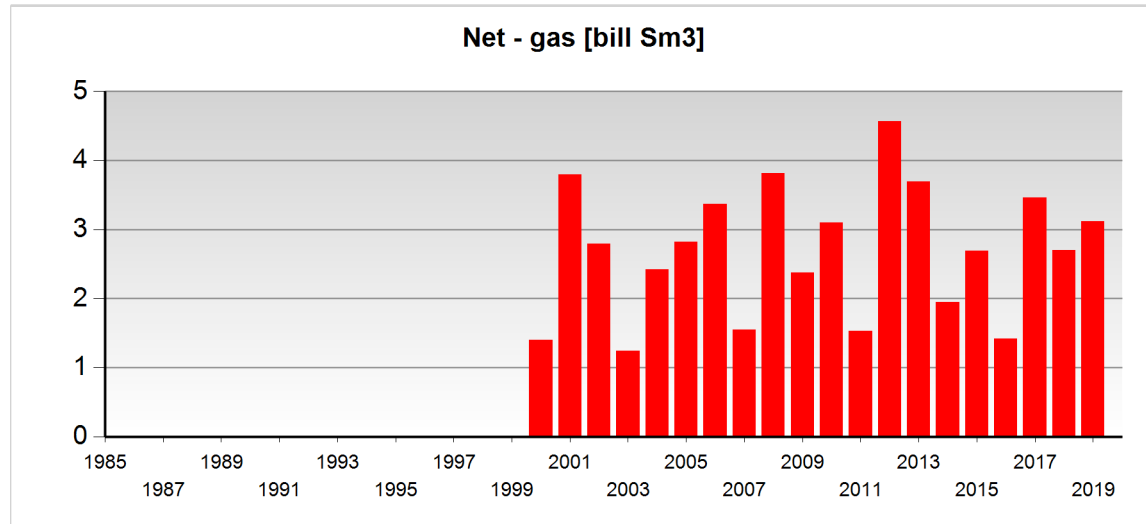
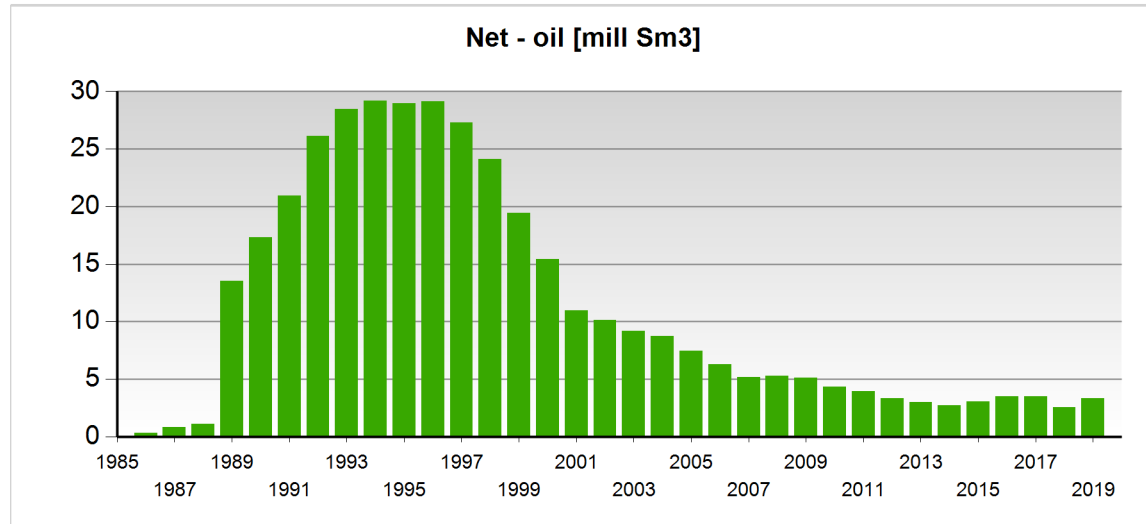
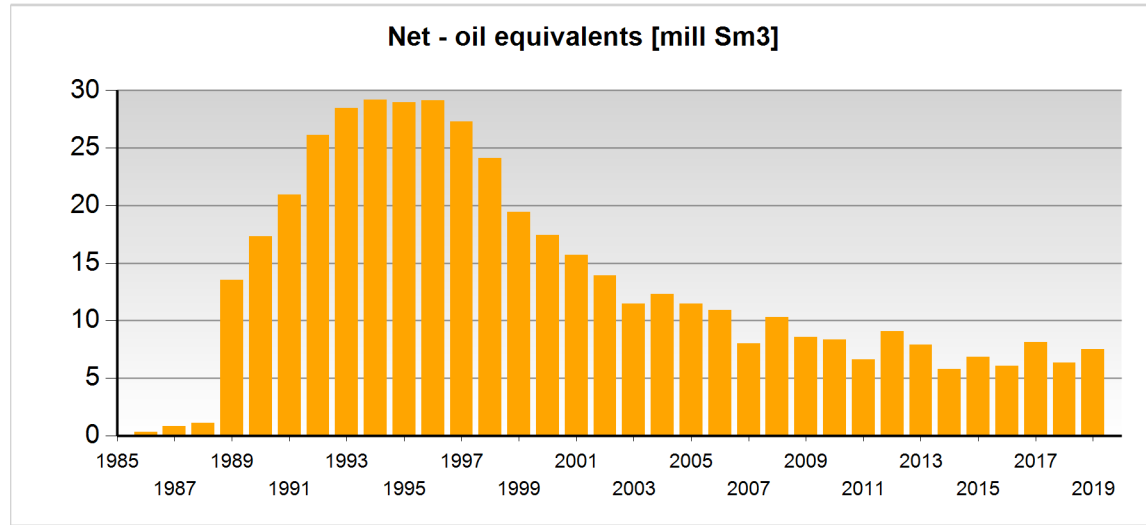


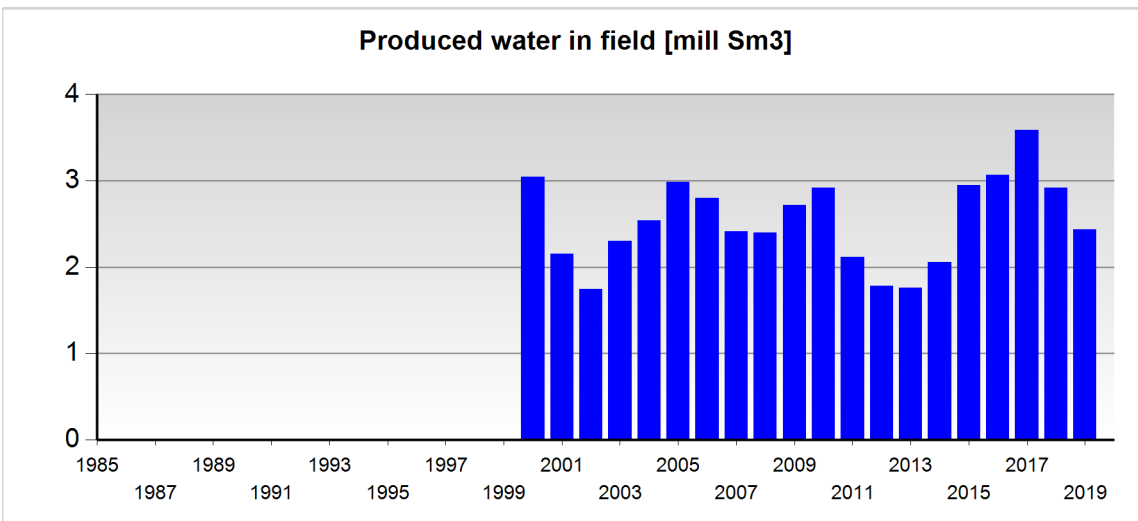
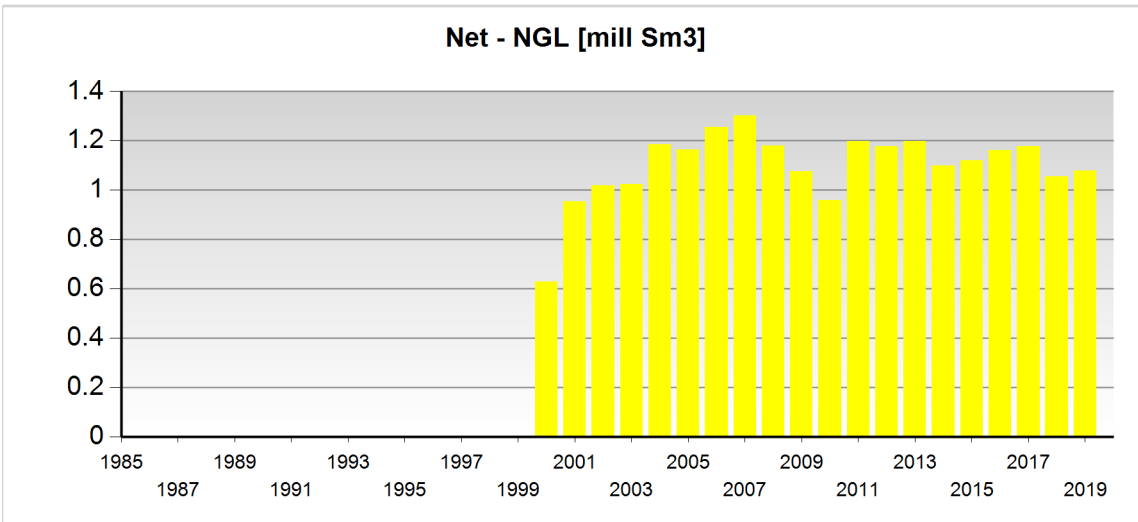
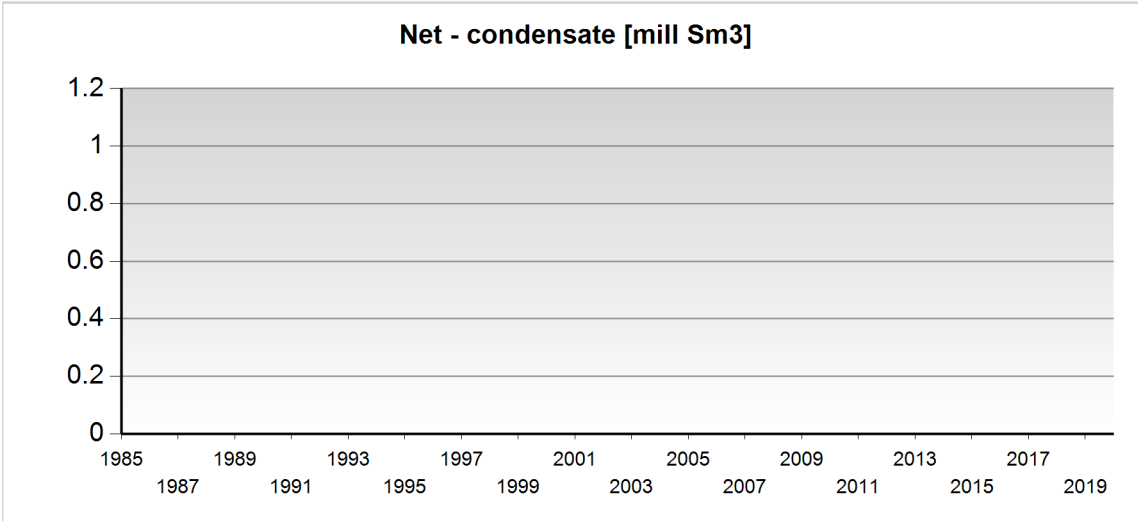
NPD Factpages

Field

Printed: 30.10.2020 - 08:51

	Month	Gross - oil [mill Sm3]	Gross - gas [bill Sm3]	Gross - condensate [mill Sm3]	Gross - oil equivalents [mill Sm3]
Sum		408.024451	304.525464	0.000000	712.549915
2020		3.129431	8.475480	0.000000	11.604911
2019		4.288935	13.340183	0.000000	17.629118
2018		3.490281	12.599958	0.000000	16.090239
2017		4.508652	13.248231	0.000000	17.756883
2016		4.476779	13.989829	0.000000	18.466608
2015		3.908575	13.209472	0.000000	17.118047
2014		3.623081	11.941905	0.000000	15.564986
2013		3.939609	12.337932	0.000000	16.277541
2012		4.307806	12.214824	0.000000	16.522630
2011		4.944943	11.293400	0.000000	16.238343
2010		5.174434	10.314608	0.000000	15.489042
2009		6.034396	11.455597	0.000000	17.489993
2008		6.417968	12.699158	0.000000	19.117126
2007		6.648791	12.054430	0.000000	18.703221
2006		7.465859	12.425206	0.000000	19.891065
2005		8.590512	12.080783	0.000000	20.671295
2004		9.894029	12.058314	0.000000	21.952343
2003		10.314523	10.352217	0.000000	20.666740
2002		11.079266	10.444350	0.000000	21.523616
2001		12.097059	10.675404	0.000000	22.772463
2000		16.110129	10.911722	0.000000	27.021851
1999		19.459404	8.691096	0.000000	28.150500
1998		24.165734	7.604217	0.000000	31.769951
1997		27.435735	7.202407	0.000000	34.638142
1996		29.241046	6.222100	0.000000	35.463146
1995		29.072090	5.400609	0.000000	34.472699
1994		29.303178	5.318762	0.000000	34.621940
1993		28.600210	4.398534	0.000000	32.998744
1992		26.219997	4.045396	0.000000	30.265393
1991		20.998341	2.950924	0.000000	23.949265
1990		17.344807	2.413573	0.000000	19.758380
1989		13.514304	1.837117	0.000000	15.351421
1988		1.125957	0.151536	0.000000	1.277493
1987		0.807807	0.122679	0.000000	0.930486
1986		0.290783	0.043511	0.000000	0.334294





Any produced water is only included after 1.1.2000



Wellbores - exploration

Wellbore name	Entered date	Completed date	Purpose	Status	Content
30/6-1	18.06.1979	22.09.1979	WILDCAT	P&A	GAS
30/6-2	24.09.1979	11.12.1979	APPRAISAL	P&A	OIL/GAS
30/6-3	16.12.1979	07.03.1980	APPRAISAL	P&A	GAS/CONDE NSATE
30/6-4	17.02.1981	11.05.1981	APPRAISAL	P&A	OIL/GAS
30/6-6	09.01.1982	24.03.1982	APPRAISAL	P&A	DRY
30/6-7	20.05.1982	24.08.1982	APPRAISAL	P&A	OIL/GAS
30/6-9	28.08.1982	16.12.1982	WILDCAT	SUSPENDED	OIL/GAS
30/6-9 R	09.05.1990	12.05.1990	WILDCAT	P&A	OIL/GAS
30/6-10	04.10.1982	02.12.1982	APPRAISAL	P&A	OIL/GAS
30/6-10 A	02.12.1982	03.03.1983	APPRAISAL	P&A	OIL/GAS
30/6-12	20.02.1983	09.03.1983	APPRAISAL	JUNKED	NOT APPLICABLE
30/6-13	11.03.1983	14.05.1983	APPRAISAL	SUSPENDED	OIL/GAS
30/6-13 R	08.09.1986	11.09.1986	APPRAISAL	P&A	OIL/GAS
30/6-15	02.05.1984	05.09.1984	WILDCAT	P&A	OIL/GAS
30/6-17	12.08.1985	24.08.1985	WILDCAT	SUSPENDED	NOT APPLICABLE
30/6-17 A	04.02.1986	18.03.1986	WILDCAT	P&A	OIL/GAS
30/6-17 R	14.11.1985	04.02.1986	WILDCAT	P&A	OIL/GAS
30/6-18	01.08.1985	23.11.1985	WILDCAT	P&A	OIL/GAS
30/6-21	22.02.1987	09.04.1987	APPRAISAL	SUSPENDED	OIL
30/6-21 R	04.06.1994	12.06.1994	APPRAISAL	P&A	OIL/GAS
30/6-26	15.09.2001	07.10.2001	WILDCAT	P&A	OIL/GAS
30/6-27	08.10.2001	30.10.2001	WILDCAT	P&A	OIL/GAS
30/6-28 S	16.01.2012	29.03.2012	WILDCAT	P&A	OIL
30/6-29 S	06.01.2015	03.03.2015	WILDCAT	RE-CLASS TO DEV	OIL
30/9-1	24.10.1982	29.01.1983	APPRAISAL	P&A	OIL
30/9-2	01.04.1983	12.07.1983	APPRAISAL	SUSPENDED	OIL/GAS
30/9-2 R	01.06.1986	07.07.1986	APPRAISAL	P&A	OIL/GAS
30/9-12	07.04.1991	09.05.1991	APPRAISAL	P&A	OIL
30/9-12 A	09.05.1991	04.06.1991	APPRAISAL	SUSPENDED	OIL
30/9-12 AR	06.07.2002	11.07.2002	APPRAISAL	P&A	OIL
30/9-19	09.09.1998	22.10.1998	WILDCAT	P&A	OIL/GAS
30/9-19 A	28.10.1998	21.12.1998	APPRAISAL	P&A	OIL/GAS
30/9-21 S	13.03.2008	30.04.2008	APPRAISAL	P&A	OIL/GAS
30/9-26 S	10.11.2014	22.11.2014	APPRAISAL	P&A	OIL
30/9-27 S	20.08.2015	25.08.2015	APPRAISAL	PLUGGED	OIL

Wellbores - development



Wellbore name	Entered date	Completed date	Purpose	Content
30/6-B-51 H	14.04.1995	28.05.1995	OBSERVATION	NOT APPLICABLE
30/6-B-51 AH	23.01.1996	26.02.1996	PRODUCTION	OIL
30/6-C-1	03.06.1992	31.08.1992	INJECTION	WATER
30/6-C-1 A			PRODUCTION	
30/6-C-2	01.09.1994	18.09.1994	INJECTION	WATER
30/6-C-3	06.05.1992	26.05.1992	PRODUCTION	OIL
30/6-C-3 A	20.09.2001	19.10.2001	PRODUCTION	OIL
30/6-C-3 B	11.02.2019	01.03.2019	PRODUCTION	OIL
30/6-C-4	20.11.1992	08.01.1993	INJECTION	WATER
30/6-C-4 A	12.06.2010	19.08.2010	INJECTION	CUTTINGS
30/6-C-5	14.10.1989	05.12.1989	INJECTION	GAS
30/6-C-5 A	20.09.2018	30.09.2018	INJECTION	GAS
30/6-C-6	14.03.1990	23.04.1990	PRODUCTION	OIL
30/6-C-6 A	03.04.1995	08.04.1995	OBSERVATION	NOT APPLICABLE
30/6-C-6 B	09.04.1995	26.04.1995	PRODUCTION	OIL
30/6-C-6 C	15.05.2002	10.07.2002	OBSERVATION	NOT APPLICABLE
30/6-C-6 D	17.07.2002	30.07.2002	PRODUCTION	OIL
30/6-C-6 E	26.10.2015	05.11.2015	PRODUCTION	OIL
30/6-C-7	08.02.1990	08.03.1990	PRODUCTION	OIL
30/6-C-7 A	06.08.1996	30.08.1996	OBSERVATION	NOT APPLICABLE
30/6-C-7 B	13.11.1996	19.12.1996	PRODUCTION	OIL
30/6-C-7 C	20.12.1996	21.01.1997	PRODUCTION	OIL
30/6-C-8	15.08.1989	06.10.1989	INJECTION	WATER
30/6-C-8 A	31.01.2006	25.03.2006	OBSERVATION	NOT APPLICABLE
30/6-C-8 B	29.03.2006	10.04.2006	PRODUCTION	GAS
30/6-C-8 C	12.04.2006	18.07.2006	PRODUCTION	OIL
30/6-C-8 D	06.01.2015	03.03.2015	PRODUCTION	OIL
30/6-C-8 E	18.10.2019	18.11.2019	PRODUCTION	OIL
30/6-C-9	11.12.1989	29.01.1990	PRODUCTION	OIL
30/6-C-9 A	21.02.2017	05.03.2017	PRODUCTION	OIL
30/6-C-10	27.12.1988	18.02.1989	PRODUCTION	OIL
30/6-C-10 A	14.09.1995	09.11.1995	OBSERVATION	NOT APPLICABLE
30/6-C-10 B	11.11.1995	27.11.1995	PRODUCTION	OIL
30/6-C-10 C	24.05.1996	31.07.1996	PRODUCTION	OIL
30/6-C-10 D	07.08.2005	18.10.2005	PRODUCTION	OIL
30/6-C-10 E	03.08.2009	17.08.2013	PRODUCTION	OIL
30/6-C-10 EY2			PRODUCTION	



30/6-C-10 F	15.11.2018	10.12.2018	PRODUCTION	OIL
30/6-C-10 G	01.05.2020	20.05.2020	PRODUCTION	OIL
30/6-C-11	14.10.1988	06.12.1988	INJECTION	GAS
30/6-C-12	23.02.1989	22.07.1989	PRODUCTION	OIL
30/6-C-12 A	21.01.1996	10.02.1996	OBSERVATION	NOT APPLICABLE
30/6-C-12 B	13.02.1996	05.03.1996	PRODUCTION	OIL
30/6-C-12 C	06.03.1996	02.04.1996	PRODUCTION	OIL
30/6-C-12 D	12.09.2017	01.02.2018	PRODUCTION	OIL
30/6-C-13	26.09.1996	24.10.1996	OBSERVATION	NOT APPLICABLE
30/6-C-13 A	09.04.1997	20.05.1997	INJECTION	GAS
30/6-C-14	01.01.1992	14.03.1992	PRODUCTION	OIL
30/6-C-14 A	18.07.2001	25.08.2001	PRODUCTION	OIL
30/6-C-14 B	10.12.2013	05.03.2014	INJECTION	GAS
30/6-C-15	19.09.1992	15.10.1992	OBSERVATION	NOT APPLICABLE
30/6-C-15 A	16.10.1992	01.11.1992	PRODUCTION	OIL
30/6-C-15 B	28.08.2002	19.11.2002	PRODUCTION	OIL
30/6-C-15 C	03.04.2007	26.08.2007	PRODUCTION	OIL
30/6-C-15 D	21.06.2015	10.08.2015	PRODUCTION	OIL
30/6-C-16	20.05.1995	02.07.1995	OBSERVATION	NOT APPLICABLE
30/6-C-16 A	03.07.1995	20.07.1995	PRODUCTION	OIL
30/6-C-17	07.06.1994	27.06.1994	PRODUCTION	OIL
30/6-C-17 A	28.06.1994	14.07.1994	OBSERVATION	NOT APPLICABLE
30/6-C-17 B	17.07.1994	21.08.1994	PRODUCTION	OIL
30/6-C-17 C	04.12.2001	22.01.2002	OBSERVATION	NOT APPLICABLE
30/6-C-17 D	25.01.2002	21.02.2002	PRODUCTION	OIL
30/6-C-17 E	14.11.2016	15.12.2016	PRODUCTION	OIL
30/6-C-17 F	04.08.2020	22.09.2020	PRODUCTION	OIL/GAS
30/6-C-18	25.09.1993	27.10.1993	OBSERVATION	NOT APPLICABLE
30/6-C-18 A	28.10.1993	22.11.1993	PRODUCTION	OIL
30/6-C-18 B	15.03.2018	08.04.2018	PRODUCTION	OIL
30/6-C-19	07.10.1994	09.03.1995	PRODUCTION	OIL
30/6-C-19 A	24.03.2016	25.03.2016	OBSERVATION	NOT APPLICABLE
30/6-C-19 B	26.03.2016	15.05.2016	PRODUCTION	OIL
30/6-C-19 C	07.01.2020	18.02.2020	PRODUCTION	OIL
30/6-C-20	22.01.1993	29.03.1993	OBSERVATION	NOT APPLICABLE
30/6-C-20 A	30.03.1993	29.04.1993	PRODUCTION	NOT APPLICABLE



NPD Factpages

Field

OLJEDIREKTORATET

Printed: 30.10.2020 - 08:51

30/6-C-20 B	09.05.1993	10.07.1993	PRODUCTION	OIL
30/6-C-20 CY1	06.09.2009	09.04.2011	PRODUCTION	OIL
30/6-C-20 CY2			PRODUCTION	
30/6-C-21	10.06.1993	05.09.1993	PRODUCTION	OIL
30/6-C-21 A	28.11.2007	15.05.2008	PRODUCTION	OIL
30/6-C-21 B	28.03.2019	06.05.2019	PRODUCTION	OIL
30/6-C-22	04.12.1993	11.01.1994	INJECTION	GAS
30/6-C-23	02.05.1994	27.05.1994	PRODUCTION	OIL
30/6-C-23 A	09.08.2014	24.08.2014	PRODUCTION	OIL
30/6-C-23 B	29.06.2019	25.08.2019	PRODUCTION	OIL
30/6-C-24	26.01.1994	26.03.1994	OBSERVATION	NOT APPLICABLE
30/6-C-24 A	27.03.1994	16.04.1994	PRODUCTION	OIL
30/6-C-24 BY1	03.08.2008	12.12.2008	PRODUCTION	OIL
30/6-C-24 BY2	13.12.2008	15.01.2009	PRODUCTION	OIL
30/6-C-25	25.03.1992	30.04.1992	INJECTION	GAS
30/6-C-26	01.10.1994	17.12.1994	OBSERVATION	NOT APPLICABLE
30/6-C-26 A	19.12.1994	09.01.1995	PRODUCTION	OIL
30/6-C-26 B	13.06.2016	12.07.2017	PRODUCTION	OIL
30/6-C-27 H	03.04.1991	05.05.1991	OBSERVATION	NOT APPLICABLE
30/6-C-27 AH	07.05.1991	10.06.1991	PRODUCTION	OIL
30/6-G-41 H	25.03.2005	28.12.2005	PRODUCTION	OIL/GAS
30/6-G-41 AH	16.09.2020	11.10.2020	PRODUCTION	OIL
30/6-G-42 AH	06.07.2020	20.08.2020	PRODUCTION	OIL
30/6-G-43 Y1H	04.04.2005	01.05.2006	PRODUCTION	OIL
30/6-G-43 Y2H	02.05.2006	23.05.2006	PRODUCTION	OIL
30/6-G-44 H	30.03.2005	25.10.2005	OBSERVATION	NOT APPLICABLE
30/6-G-44 AH	28.10.2005	27.11.2005	PRODUCTION	OIL/GAS
30/6-G-44 BH	18.01.2007	11.03.2007	PRODUCTION	GAS
30/6-H-1	05.11.2019	08.01.2020	PRODUCTION	OIL/GAS
30/6-H-2	31.03.2018	20.10.2018	OBSERVATION	NOT APPLICABLE
30/6-H-2 A	21.10.2018	28.10.2018	OBSERVATION	NOT APPLICABLE
30/6-H-2 B	29.10.2018	07.11.2018	INJECTION	GAS
30/6-H-3 Y1	31.05.2019	04.09.2019	PRODUCTION	OIL/GAS
30/6-H-3 Y2	05.09.2019	12.09.2019	PRODUCTION	OIL/GAS
30/6-H-4	25.05.2019	05.10.2019	OBSERVATION	NOT APPLICABLE
30/6-H-4 A	07.10.2019	25.10.2019	PRODUCTION	OIL/GAS
30/6-H-5 Y1	09.04.2018	01.01.2019	PRODUCTION	OIL/GAS
30/6-H-5 Y2	02.01.2019	10.01.2019	PRODUCTION	OIL/GAS



NPD Factpages

Field

Printed: 30.10.2020 - 08:51

30/6-H-6 Y2	27.02.2019	21.03.2019	PRODUCTION	OIL/GAS
30/6-H-6 Y1	05.05.2018	26.02.2019	PRODUCTION	OIL/GAS
30/6-H-7	12.11.2019	11.03.2020	PRODUCTION	OIL/GAS
30/6-H-8	11.05.2018	16.07.2018	OBSERVATION	NOT APPLICABLE
30/6-H-8 AY1	23.07.2018	22.08.2018	PRODUCTION	OIL/GAS
30/6-H-8 AY2	23.08.2018	28.08.2018	PRODUCTION	OIL/GAS
30/6-H-9	13.04.2018	02.07.2019	OBSERVATION	OIL
30/6-H-9 A	04.07.2019	15.07.2019	PRODUCTION	OIL/GAS
30/6-H-10	27.03.2020	29.04.2020	PRODUCTION	OIL
30/9-B-1	08.05.1992	31.05.1992	OBSERVATION	NOT APPLICABLE
30/9-B-1 A	02.06.1992	17.06.1992	PRODUCTION	OIL
30/9-B-1 B	19.01.2002	23.02.2002	OBSERVATION	NOT APPLICABLE
30/9-B-1 C	27.02.2002	06.03.2002	PRODUCTION	OIL
30/9-B-1 D	08.08.2016	23.08.2016	PRODUCTION	OIL
30/9-B-2	09.11.1990	02.01.1991	INJECTION	GAS
30/9-B-3	23.05.1989	30.06.1989	INJECTION	GAS
30/9-B-4	14.07.1992	29.07.1992	PRODUCTION	OIL
30/9-B-4 A	22.12.2004	28.01.2005	PRODUCTION	OIL
30/9-B-4 AY2	18.10.2020	24.10.2020	OBSERVATION	
30/9-B-4 AY3	25.10.2020		PRODUCTION	
30/9-B-5	03.11.1992	17.11.1992	OBSERVATION	NOT APPLICABLE
30/9-B-5 A	28.04.1993	03.07.1993	OBSERVATION	NOT APPLICABLE
30/9-B-5 B	04.07.1993	09.07.1993	OBSERVATION	NOT APPLICABLE
30/9-B-5 C	10.07.1993	30.07.1993	PRODUCTION	OIL
30/9-B-5 D	16.11.2001	20.12.2001	PRODUCTION	OIL
30/9-B-5 E	24.12.2019	14.02.2020	PRODUCTION	OIL
30/9-B-6	19.12.1993	26.11.1994	OBSERVATION	NOT APPLICABLE
30/9-B-6 A	28.11.1994	14.12.1994	PRODUCTION	OIL
30/9-B-7	24.07.1988	28.10.1990	PRODUCTION	OIL
30/9-B-7 A	31.05.2003	20.06.2003	INJECTION	GAS
30/9-B-7 B				
30/9-B-8	04.02.1991	04.04.1991	INJECTION	GAS
30/9-B-9	23.01.1993	11.02.1993	OBSERVATION	NOT APPLICABLE
30/9-B-9 A	12.02.1993	06.03.1993	PRODUCTION	OIL
30/9-B-9 B	11.03.2003	27.04.2003	PRODUCTION	OIL
30/9-B-9 C	05.04.2019	18.04.2019	PRODUCTION	OIL
30/9-B-10	24.09.1996	28.10.1996	OBSERVATION	NOT APPLICABLE



NPD Factpages

Field

Printed: 30.10.2020 - 08:51

OLJEDIREKTORATET

30/9-B-10 A	29.10.1996	28.11.1996	PRODUCTION	OIL
30/9-B-10 BY1	24.02.2005	06.09.2005	PRODUCTION	OIL
30/9-B-10 BY2	07.09.2005	01.11.2005	PRODUCTION	OIL
30/9-B-11	12.08.1993	19.09.1993	OBSERVATION	NOT APPLICABLE
30/9-B-11 A	20.09.1993	28.09.1993	PRODUCTION	OIL
30/9-B-11 B	07.07.2015	10.10.2015	PRODUCTION	OIL
30/9-B-11 C	11.10.2015	27.11.2015	PRODUCTION	OIL
30/9-B-12	14.07.1990	09.09.1990	PRODUCTION	NOT APPLICABLE
30/9-B-12 A	18.01.1991	02.03.1991	PRODUCTION	OIL
30/9-B-12 B	04.05.1999	11.07.1999	PRODUCTION	OIL
30/9-B-12 C	20.04.2011	03.05.2011	PRODUCTION	OIL
30/9-B-13	28.08.1989	27.10.1989	PRODUCTION	OIL
30/9-B-13 A	25.11.1998	17.01.1999	INJECTION	WATER/GAS
30/9-B-14	26.04.1996	18.05.1996	OBSERVATION	NOT APPLICABLE
30/9-B-14 A	19.05.1996	22.06.1996	PRODUCTION	OIL
30/9-B-14 B	28.08.2002	06.01.2003	PRODUCTION	OIL
30/9-B-14 C	16.11.2017	27.11.2017	OBSERVATION	NOT APPLICABLE
30/9-B-14 D	02.12.2017	11.12.2017	PRODUCTION	NOT APPLICABLE
30/9-B-14 E	09.10.2018	28.10.2018	PRODUCTION	OIL
30/9-B-15	01.05.1990	30.06.1990	INJECTION	GAS
30/9-B-16	01.05.1995	05.06.1995	OBSERVATION	NOT APPLICABLE
30/9-B-16 A	09.07.1996	07.09.1996	PRODUCTION	OIL
30/9-B-16 B	03.12.2005	27.01.2006	INJECTION	WATER
30/9-B-17	13.03.1993	14.04.1993	PRODUCTION	OIL
30/9-B-18	10.07.1992	25.09.1992	OBSERVATION	NOT APPLICABLE
30/9-B-18 A	27.09.1992	23.10.1992	PRODUCTION	OIL
30/9-B-18 B	04.01.2017	29.01.2017	PRODUCTION	OIL
30/9-B-19	11.04.1987	15.08.1989	INJECTION	NOT APPLICABLE
30/9-B-19 A	28.03.2006	22.11.2006	OBSERVATION	NOT APPLICABLE
30/9-B-19 B	01.12.2006	14.02.2007	INJECTION	GAS
30/9-B-20	09.07.1986	23.08.1986	INJECTION	GAS
30/9-B-20 A	29.11.1997	12.12.1997	INJECTION	GAS
30/9-B-21	22.09.1985	02.01.1986	PRODUCTION	OIL
30/9-B-21 A	13.05.1998	07.06.1998	OBSERVATION	NOT APPLICABLE
30/9-B-21 B	08.06.1998	20.06.1998	PRODUCTION	OIL
30/9-B-21 C	05.12.2008	31.01.2009	INJECTION	GAS



Field

OLJEDIREKTORATET

30/9-B-23	29.08.1986	07.11.1986	PRODUCTION	OIL
30/9-B-23 A	05.11.1999	02.12.1999	PRODUCTION	NOT APPLICABLE
30/9-B-23 B	23.05.2000	02.06.2000	PRODUCTION	OIL
30/9-B-23 C	08.03.2016	19.04.2016	PRODUCTION	OIL
30/9-B-24	14.11.1986	15.12.1986	PRODUCTION	OIL
30/9-B-24 A	08.01.1997	12.03.1997	PRODUCTION	OIL
30/9-B-24 B	16.04.2007	15.07.2007	PRODUCTION	OIL
30/9-B-24 C	04.03.2018	30.07.2018	PRODUCTION	OIL
30/9-B-25	19.05.1986	03.07.1986	INJECTION	GAS
30/9-B-26	21.12.1986	16.02.1987	PRODUCTION	OIL
30/9-B-26 A	15.08.1997	03.09.1997	OBSERVATION	NOT APPLICABLE
30/9-B-26 B	04.09.1997	17.09.1997	PRODUCTION	OIL
30/9-B-26 C	05.04.2008	24.05.2008	INJECTION	WATER
30/9-B-27	19.03.1986	14.05.1986	PRODUCTION	OIL
30/9-B-27 A	04.05.1997	18.05.1997	OBSERVATION	NOT APPLICABLE
30/9-B-27 B	19.06.1997	04.08.1997	PRODUCTION	OIL
30/9-B-27 C	17.12.2009	19.06.2010	PRODUCTION	OIL
30/9-B-27 D	04.02.2015	31.03.2015	PRODUCTION	OIL
30/9-B-27 E	14.02.2017	06.03.2017	PRODUCTION	OIL
30/9-B-28	16.09.2007	15.02.2008	PRODUCTION	OIL
30/9-B-29	13.01.1986	13.03.1986	PRODUCTION	OIL
30/9-B-29 A	25.02.1999	10.03.1999	OBSERVATION	NOT APPLICABLE
30/9-B-29 B	18.03.1999	22.04.1999	PRODUCTION	OIL
30/9-B-29 C	18.03.2020	05.09.2020	PRODUCTION	OIL
30/9-B-30	03.12.1993	16.09.1994	INJECTION	NOT APPLICABLE
30/9-B-30 A	22.01.1998	08.03.1998	OBSERVATION	NOT APPLICABLE
30/9-B-30 B	10.03.1998	02.04.1998	PRODUCTION	OIL
30/9-B-30 C	24.07.2008	16.10.2008	PRODUCTION	OIL
30/9-B-30 D	10.11.2016	10.12.2016	PRODUCTION	OIL
30/9-B-30 E	10.06.2020	29.07.2020	PRODUCTION	OIL
30/9-B-31	16.08.1989	25.01.1990	INJECTION	GAS
30/9-B-32	19.11.1992	28.12.1992	OBSERVATION	NOT APPLICABLE
30/9-B-32 A	29.12.1992	10.01.1993	PRODUCTION	OIL
30/9-B-32 B	20.10.2016	30.10.2016	PRODUCTION	OIL
30/9-B-33	13.08.1999	18.10.1999	OBSERVATION	NOT APPLICABLE
30/9-B-33 A	06.12.1999	22.12.1999	PRODUCTION	OIL
30/9-B-33 B	10.09.2017	12.10.2017	PRODUCTION	OIL
30/9-B-34	25.12.1994	19.04.1995	INJECTION	WATER



30/9-B-35	11.10.1993	29.11.1993	PRODUCTION	OIL
30/9-B-35 A	23.11.2018	11.01.2019	OBSERVATION	NOT APPLICABLE
30/9-B-35 B	14.01.2019	23.02.2019	PRODUCTION	OIL
30/9-B-36	24.01.1996	26.02.1996	OBSERVATION	NOT APPLICABLE
30/9-B-36 A	27.02.1996	16.04.1996	PRODUCTION	OIL
30/9-B-36 B	13.10.2019	18.11.2019	PRODUCTION	OIL
30/9-B-37	04.12.2000	21.01.2001	PRODUCTION	OIL
30/9-B-38	16.02.1992	25.04.1992	PRODUCTION	OIL
30/9-B-38 A	06.02.2000	15.03.2000	PRODUCTION	OIL
30/9-B-38 B	16.03.2000	02.05.2000	PRODUCTION	OIL
30/9-B-38 C	20.09.2014	17.10.2014	PRODUCTION	OIL
30/9-B-38 D	19.10.2014	15.11.2014	PRODUCTION	OIL
30/9-B-38 E	11.05.2016	02.07.2016	OBSERVATION	NOT APPLICABLE
30/9-B-38 F	03.07.2016	13.07.2016	PRODUCTION	OIL
30/9-B-38 G	13.06.2019	17.08.2019	PRODUCTION	OIL
30/9-B-39	27.04.1991	26.09.1991	PRODUCTION	OIL
30/9-B-40	05.02.1990	18.04.1990	PRODUCTION	OIL
30/9-B-40 A	26.09.2000	02.12.2000	PRODUCTION	NOT APPLICABLE
30/9-B-40 B	08.02.2001	11.07.2001	PRODUCTION	OIL
30/9-B-41	25.06.1998	29.07.1998	OBSERVATION	OIL
30/9-B-41 A	28.09.1998	23.10.1998	PRODUCTION	OIL
30/9-B-41 B	31.12.2015	15.02.2016	PRODUCTION	OIL
30/9-B-42	06.08.1988	29.04.1989	PRODUCTION	NOT APPLICABLE
30/9-B-42 A	27.07.2001	02.08.2001	INJECTION	CUTTINGS
30/9-B-43	20.06.2000	13.08.2000	OBSERVATION	NOT APPLICABLE
30/9-B-43 A	14.08.2000	28.08.2000	PRODUCTION	OIL
30/9-B-44	14.06.2000	15.09.2001	OBSERVATION	NOT APPLICABLE
30/9-B-44 A	16.09.2001	10.10.2001	PRODUCTION	OIL
30/9-B-44 B	04.09.2010	22.11.2010	OBSERVATION	OIL
30/9-B-44 C	26.11.2010	08.01.2011	PRODUCTION	OIL
30/9-B-45	20.03.2002	13.07.2002	PRODUCTION	OIL
30/9-B-46	17.10.1991	22.01.1992	PRODUCTION	OIL
30/9-B-46 A	09.04.2009	24.07.2009	PRODUCTION	OIL
30/9-B-46 B	28.07.2009	31.07.2009	OBSERVATION	OIL
30/9-B-46 C	01.08.2009	05.08.2009	OBSERVATION	OIL
30/9-B-46 D	06.08.2009	13.08.2009	PRODUCTION	OIL
30/9-B-46 E	29.12.2017	09.02.2018	PRODUCTION	OIL
30/9-B-47	07.08.2003	26.11.2004	PRODUCTION	OIL



NPD Factpages

Field

Printed: 30.10.2020 - 08:51

OLJEDIREKTORATET

30/9-B-47 A	02.06.2017	27.07.2017	PRODUCTION	OIL
30/9-B-47 B			PRODUCTION	
30/9-B-48	22.12.1993	26.05.1994	INJECTION	WATER
30/9-B-49 H	09.07.1986	17.08.1986	PRODUCTION	OIL
30/9-B-50 H	23.05.1987	22.06.1987	PRODUCTION	OIL
30/9-L-51 H	04.12.2007	21.07.2008	OBSERVATION	NOT APPLICABLE
30/9-L-51 AH	23.07.2008	18.08.2008	PRODUCTION	OIL
30/9-L-52 H	28.10.2015	08.12.2015	PRODUCTION	OIL/GAS/CO NDENSATE
30/9-L-52 AH	10.12.2015	18.12.2015	PRODUCTION	OIL/GAS
30/9-L-53 H	21.11.2007	18.01.2008	OBSERVATION	NOT APPLICABLE
30/9-L-53 AH	20.01.2008	03.03.2008	PRODUCTION	OIL
30/9-O-1 H	05.02.2015	09.10.2015	PRODUCTION	OIL
30/9-O-2 H	17.02.2015	07.09.2015	INJECTION	GAS
30/9-O-4 H	04.10.2014	10.10.2014	PRODUCTION	NOT APPLICABLE
30/9-P-1 H	19.10.2014	10.12.2014	PRODUCTION	OIL
30/9-P-1 AH	14.06.2015	28.07.2015	PRODUCTION	OIL
30/9-P-2 H	11.01.2015	04.05.2015	PRODUCTION	GAS
30/9-P-3 H	21.01.2015	21.04.2015	INJECTION	GAS
30/9-P-4 H			OBSERVATION	
30/9-P-4 AH			PRODUCTION	

Wellbores - other

Wellbore name	Entered date	Completed date	Purpose	Status
---------------	--------------	----------------	---------	--------