

General information

Field name	STATFJORD
Factmaps in new window	link
Current activity status	Producing
Discovery wellbore	33/12-1
Discovery year.	1974
Main area	North Sea
Main supply base	Mongstad
NPDID field	43658

Picture

Discoveries included

Discovery name
33/12-1 Statfjord

Activity status - history

Status	Status from	Status to
Producing	24.11.1979	
Approved for production	16.06.1976	23.11.1979

Located in

Block name	Prod. licence
33/9	037
33/12	037

Owner - current

Owner kind	Owner name
BUSINESS ARRANGEMENT AREA	STATFJORD UNIT

Operatorship - current

Company name
Equinor Energy AS

Licenses - current



Company name	Nation code	Company share [%]
Equinor Energy AS	NO	44.336880
Vår Energi AS	NO	21.367170
Spirit Energy Norway AS	NO	19.764640
Spirit Energy Resources Limited	GB	14.531310

The NPD estimate for reserves (Norwegian share)

Valid date: 31.12.2019

Orig. recoverable oil [mill Sm3]	Orig. recoverable gas [bill Sm3]	Orig. recoverable NGL [mill tonn]	Orig. recoverable cond. [mill Sm3]	Orig. recoverable oil eq. [mill Sm3 o.e]
578.69	81.29	22.64	0.81	703.81

Remaining oil [mill Sm3]	Remaining gas [bill Sm3]	Remaining NGL [mill tonn]	Remaining cond. [mill Sm3]	Remaining oil eq. [mill Sm3 o.e]
3.09	4.06	1.26	0.00	9.54

Orig. inplace oil [mill Sm3]	Orig. inplace ass. liquid [mill Sm3]	Orig. inplace ass. gas [bill Sm3]	Orig. inplace free gas [bill Sm3]
860.00	0.00	154.00	0.00

Description

Type	Text	Date updated
Development	Statfjord is a field in the Tampen area in the northern part of the North Sea, on the border between the Norwegian and UK sectors. The Norwegian share of the field is 85.47 per cent. The water depth is 150 metres. Statfjord was discovered in 1974, and the plan for development and operation (PDO) was approved in 1976. The field has been developed with three fully integrated concrete facilities: Statfjord A, Statfjord B and Statfjord C. Statfjord A, centrally located on the field, came on stream in 1979. Statfjord B, in the southern part of the field, in 1982, and Statfjord C, in the northern part, in 1985. The satellite fields Statfjord Øst, Statfjord Nord and Sygna have a dedicated inlet separator on Statfjord C. A PDO for Statfjord Late Life was approved in 2005.	14.02.2020
Reservoir	Statfjord produces oil and associated gas from Jurassic sandstone in the Brent and Statfjord Groups, and in the Cook Formation. The Brent and Statfjord Groups have excellent reservoir quality. The reservoirs lie at a depth of 2,500-3,000 metres in a large fault block tilted towards the west, and in several smaller blocks along the eastern flank.	16.03.2018



Recovery	The field was originally produced by pressure support from water alternating gas injection (WAG), water injection and partial gas injection. Statfjord Late Life entails that all injection now has ceased. To release the solution gas from the remaining oil, depressurisation of the reservoirs started in 2007.	16.03.2018
Transport	Stabilised oil is stored in storage cells at each facility. Oil is loaded onto tankers from one of the two oil-loading systems on the field. Since 2007, gas is exported through Tampen Link, and routed via the Far North Liquids and Gas System (FLAGS) pipeline to the UK. The UK licensees route their share of the gas through the FLAGS pipeline from Statfjord B to St Fergus in the UK.	11.04.2017
Status	Work is ongoing to extend the lifetime of the field. Plans include prolonging the lifetime of the platforms and drilling of many new wells in the years to come. Satellite fields tied-back to Statfjord as well as nearby discoveries will benefit from the lifetime extension.	26.02.2020

Investments (expected)

Future investments from 2019 [mill NOK 2019-kroner] : 2652

Investments (historical)

	Investments [mill NOK nominal values]
Sum	77830
2018	941
2017	1251
2016	1295
2015	1675
2014	2553
2013	2776
2012	2075
2011	1826
2010	2841
2009	3009
2008	3228
2007	2757
2006	2869
2005	1892
2004	1488
2003	1214
2002	1229
2001	1162
2000	966
1999	1595
1998	1742



1997	914
1996	710
1995	604
1994	409
1993	445
1992	820
1991	764
1990	406
1989	310
1988	299
1987	307
1986	869
1985	1929
1984	3192
1983	4015
1982	5375
1981	3590
1980	3037
1979	3289
1978	2379
1977	1621
1976	1450
1975	627
1974	85

Production , saleable

	Month	Net - oil [mill Sm3]	Net - gas [bill Sm3]	Net - condensate [mill Sm3]	Net - NGL [mill Sm3]	Net - oil equivalents [mill Sm3]
Sum		575.454438	79.210659	0.932603	40.831820	696.429520
2020		0.486514	0.530102	0.000000	0.410180	1.426796
2019		0.825319	1.091494	0.000000	0.670306	2.587119
2018		1.008507	1.300428	0.000000	0.965901	3.274836
2017		1.177954	1.832023	0.000000	1.413290	4.423267
2016		1.439122	2.686082	0.000000	1.901073	6.026277
2015		1.364652	2.400976	0.183077	1.738509	5.687214
2014		1.409282	1.773337	0.137682	1.371056	4.691357
2013		1.593669	1.470736	0.066160	0.944249	4.074814
2012		1.541115	1.330027	0.039344	0.553020	3.463506
2011		1.882104	1.349327	0.040939	0.423002	3.695372
2010		1.998980	2.293479	0.079745	0.884121	5.256325
2009		2.110870	2.475214	0.095996	1.026974	5.709054
2008		3.177322	3.022589	0.116286	1.304456	7.620653
2007		3.980600	2.012290	0.045386	1.015862	7.054138



NPD Factpages

Field

Printed: 30.9.2020 - 23:13

2006	4.259302	1.947811	0.016033	0.980581	7.203727
2005	5.563458	1.960160	0.044581	0.764278	8.332477
2004	6.970234	2.140805	0.067374	0.693154	9.871567
2003	7.754535	1.193936	0.000000	0.621739	9.570210
2002	8.871807	1.513911	0.000000	0.625571	11.011289
2001	10.126245	1.433548	0.000000	0.646279	12.206072
2000	10.885986	1.551810	0.000000	0.721614	13.159410
1999	12.519261	2.279729	0.000000	1.046923	15.845913
1998	16.595580	2.511850	0.000000	1.206656	20.314086
1997	19.154507	3.094258	0.000000	1.443023	23.691788
1996	21.609224	3.236085	0.000000	1.510229	26.355538
1995	25.877950	2.941681	0.000000	1.314894	30.134525
1994	31.730897	3.143973	0.000000	1.390760	36.265630
1993	33.304142	2.960362	0.000000	1.357392	37.621896
1992	36.989366	2.981189	0.000000	1.531079	41.501634
1991	34.857718	2.837768	0.000000	1.506417	39.201903
1990	33.313718	2.972356	0.000000	1.606165	37.892239
1989	33.992609	3.014106	0.000000	1.632532	38.639247
1988	34.585959	3.202519	0.000000	1.794535	39.583013
1987	34.959145	3.260151	0.000000	1.861083	40.080379
1986	34.280777	3.010276	0.000000	1.652573	38.943626
1985	28.761762	0.454271	0.000000	0.302344	29.518377
1984	22.436733	0.000000	0.000000	0.000000	22.436733
1983	19.044128	0.000000	0.000000	0.000000	19.044128
1982	11.396653	0.000000	0.000000	0.000000	11.396653
1981	7.928160	0.000000	0.000000	0.000000	7.928160
1980	3.429181	0.000000	0.000000	0.000000	3.429181
1979	0.259391	0.000000	0.000000	0.000000	0.259391

Production , sum wellbores

	Month	Gross - oil [mill Sm3]	Gross - gas [bill Sm3]	Gross - condensate [mill Sm3]	Gross - oil equivalents [mill Sm3]
Sum		575.428670	189.188083	0.000000	764.616753
2020		0.490061	0.944168	0.000000	1.434229
2019		0.810463	1.759055	0.000000	2.569518
2018		1.008509	2.252328	0.000000	3.260837
2017		1.178007	2.831704	0.000000	4.009711
2016		1.436553	3.231856	0.000000	4.668409
2015		1.369544	2.845935	0.000000	4.215479
2014		1.413825	2.218984	0.000000	3.632809
2013		1.564915	1.825986	0.000000	3.390901
2012		1.527391	1.626032	0.000000	3.153423
2011		1.854501	1.570222	0.000000	3.424723



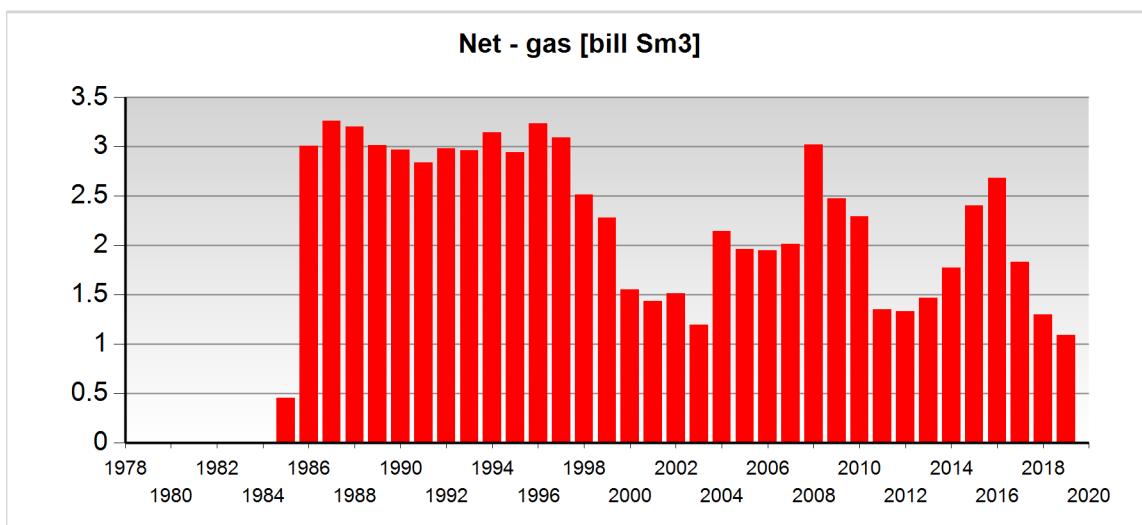
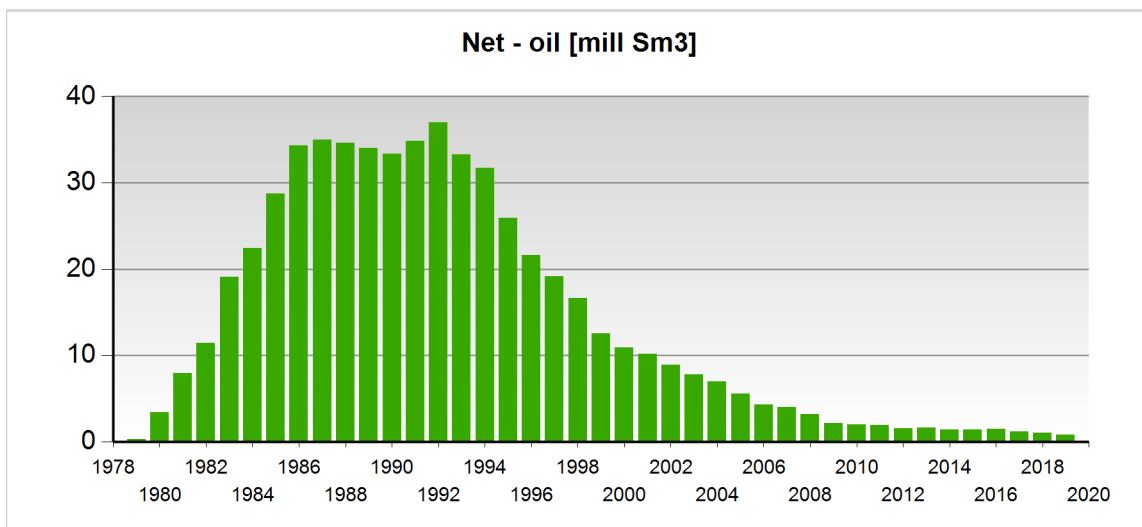
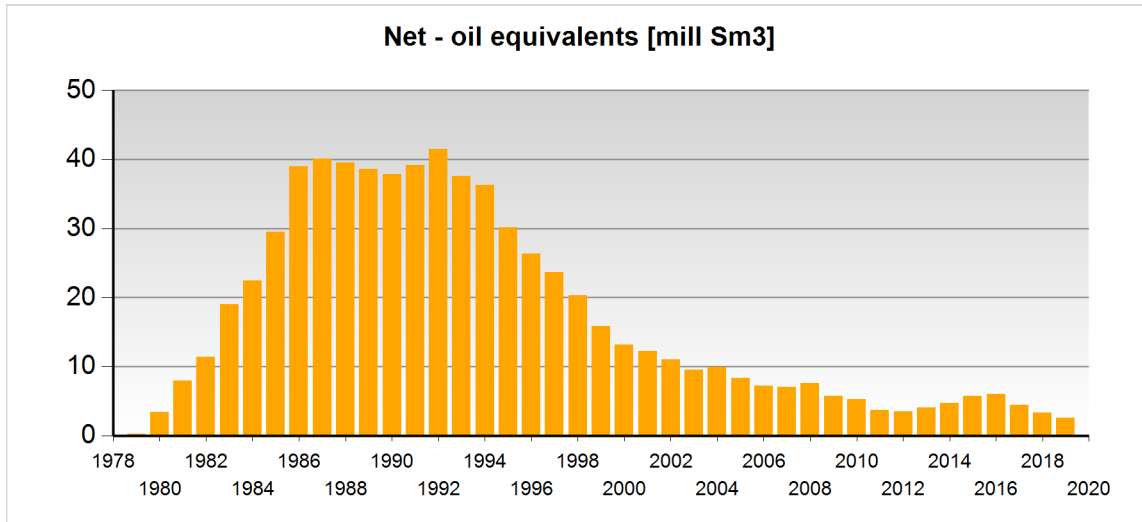
NPD Factpages

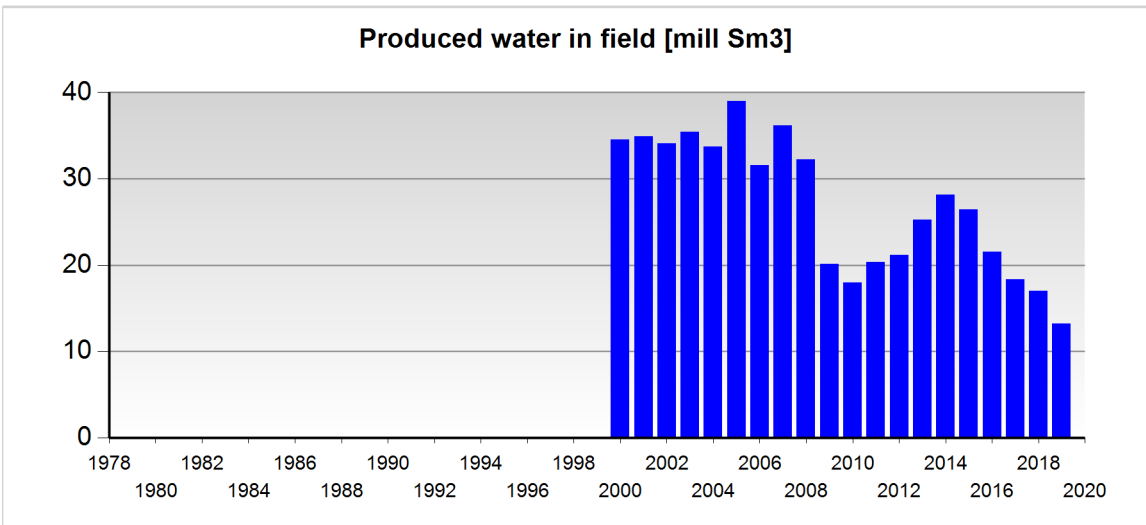
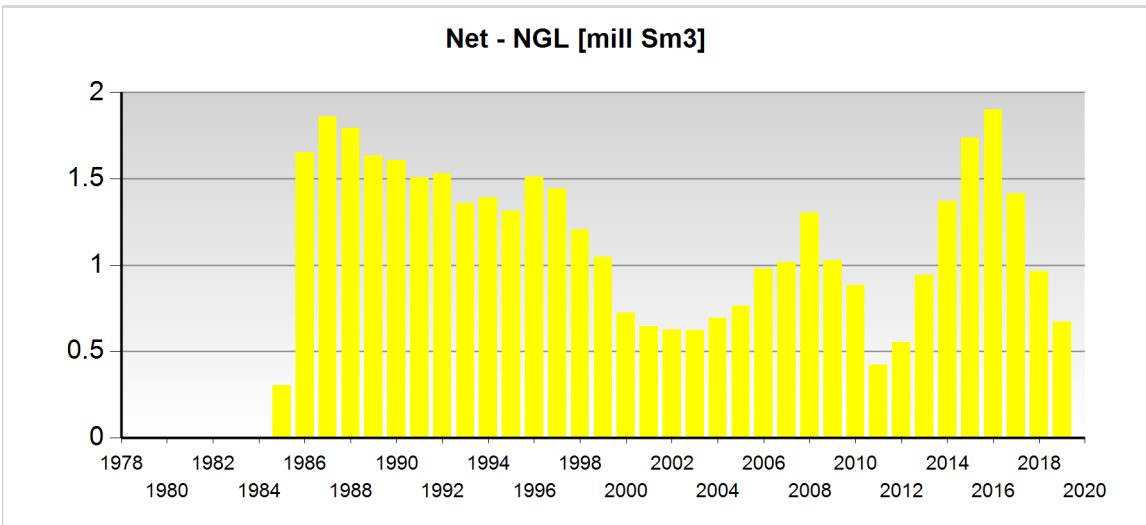
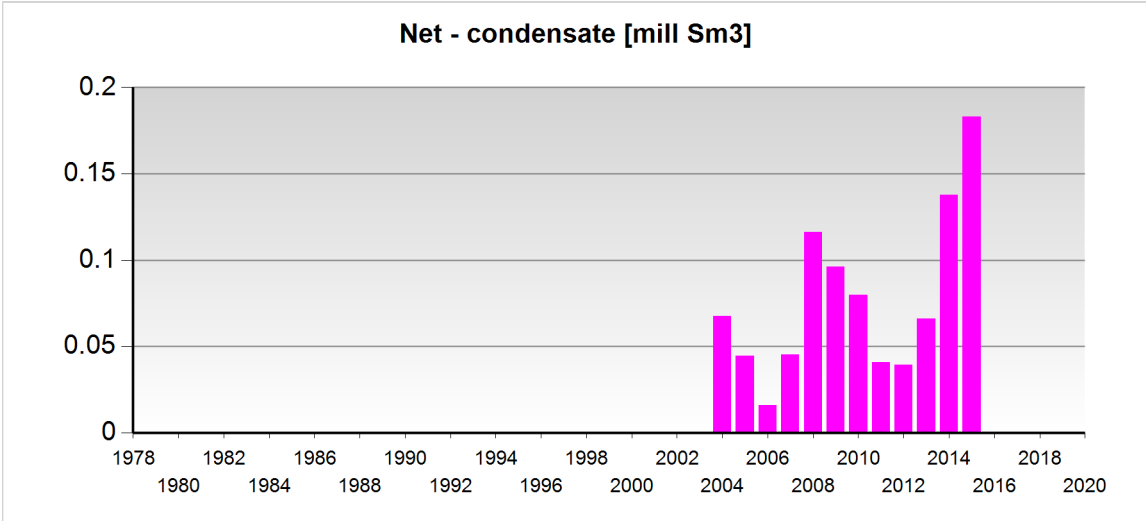
Field

Printed: 30.9.2020 - 23:13

2010		2.000592	2.620477	0.000000	4.621069
2009		2.131485	2.754424	0.000000	4.885909
2008		3.177266	3.653673	0.000000	6.830939
2007		3.980600	3.661127	0.000000	7.641727
2006		4.278878	3.674173	0.000000	7.953051
2005		5.563458	4.524290	0.000000	10.087748
2004		6.970279	5.226003	0.000000	12.196282
2003		7.754597	5.182281	0.000000	12.936878
2002		8.872783	5.619176	0.000000	14.491959
2001		10.126171	5.902242	0.000000	16.028413
2000		10.891931	5.907918	0.000000	16.799849
1999		12.519261	6.344521	0.000000	18.863782
1998		16.595580	6.851371	0.000000	23.446951
1997		19.154507	7.256316	0.000000	26.410823
1996		21.609224	7.131302	0.000000	28.740526
1995		25.877950	7.180201	0.000000	33.058151
1994		31.730897	7.493726	0.000000	39.224623
1993		33.304142	7.188509	0.000000	40.492651
1992		36.989366	7.814009	0.000000	44.803375
1991		34.857718	7.350527	0.000000	42.208245
1990		33.313718	7.677315	0.000000	40.991033
1989		33.992609	7.843394	0.000000	41.836003
1988		34.585959	7.510084	0.000000	42.096043
1987		34.959145	7.450523	0.000000	42.409668
1986		34.280777	6.802106	0.000000	41.082883
1985		28.761762	5.745525	0.000000	34.507287
1984		22.436733	4.198828	0.000000	26.635561
1983		19.044128	3.436332	0.000000	22.480460
1982		11.396653	2.026821	0.000000	13.423474
1981		7.928160	1.398474	0.000000	9.326634
1980		3.429181	0.608911	0.000000	4.038092
1979		0.259391	0.047234	0.000000	0.306625

Production - charts





Any produced water is only included after 1.1.2000

Wellbores - exploration



Wellbore name	Entered date	Completed date	Purpose	Status	Content
33/9-1	02.04.1974	04.06.1974	APPRAISAL	P&A	OIL
33/9-2	27.08.1974	14.09.1974	APPRAISAL	JUNKED	NOT APPLICABLE
33/9-3	15.09.1974	14.11.1974	APPRAISAL	P&A	OIL
33/9-4	30.07.1975	17.09.1975	APPRAISAL	P&A	OIL
33/9-5	27.10.1975	01.01.1976	APPRAISAL	P&A	OIL
33/9-9	27.07.1977	17.11.1977	APPRAISAL	P&A	OIL/GAS
33/12-1	01.12.1973	18.04.1974	WILDCAT	P&A	OIL
33/12-2	06.06.1974	23.08.1974	APPRAISAL	P&A	OIL
33/12-3	23.04.1975	16.05.1975	APPRAISAL	JUNKED	NOT APPLICABLE
33/12-4	17.05.1975	17.07.1975	APPRAISAL	P&A	OIL
33/12-5	09.10.1975	21.02.1976	APPRAISAL	P&A	DRY

Wellbores - development

Wellbore name	Entered date	Completed date	Purpose	Content
33/9-A-1	04.01.1984	14.02.1984	INJECTION	WATER
33/9-A-2	03.10.1982	04.07.1983	PRODUCTION	OIL
33/9-A-2 A	24.03.1994	20.05.1994	PRODUCTION	OIL
33/9-A-2 B	09.06.2007	19.10.2007	PRODUCTION	GAS
33/9-A-3	18.01.1980	28.02.1980	INJECTION	GAS
33/9-A-3 A	01.03.1980	23.03.1980	INJECTION	GAS
33/9-A-4	28.06.1983	07.12.1983	INJECTION	WATER
33/9-A-4 A	08.02.2017	18.03.2017	PRODUCTION	OIL
33/9-A-6	25.08.1980	14.10.1980	PRODUCTION	OIL
33/9-A-6 A	17.08.1995	17.09.1995	PRODUCTION	OIL
33/9-A-7	12.04.1980	03.07.1980	PRODUCTION	OIL
33/9-A-7 A	11.02.2000	20.02.2000	PRODUCTION	OIL
33/9-A-7 B	27.10.2000	02.11.2000	PRODUCTION	OIL
33/9-A-7 C	10.06.2001	28.06.2001	PRODUCTION	OIL
33/9-A-7 D	17.08.2013	26.09.2013	PRODUCTION	OIL/GAS
33/9-A-8	21.10.1982	16.01.1983	INJECTION	NOT APPLICABLE
33/9-A-8 A	17.01.1983	03.02.1983	INJECTION	NOT APPLICABLE
33/9-A-8 B	05.02.1983	22.04.1983	INJECTION	GAS
33/9-A-8 C	01.09.2000	07.09.2000	INJECTION	WATER
33/9-A-9	30.05.1982	30.08.1982	INJECTION	WATER
33/9-A-10	22.02.1991	23.10.1992	PRODUCTION	OIL
33/9-A-10 A	15.01.2003	19.02.2003	PRODUCTION	OIL
33/9-A-10 B			PRODUCTION	
33/9-A-11	01.11.1984	26.02.1985	PRODUCTION	OIL



NPD Factpages

Field

Printed: 30.9.2020 - 23:13

OLJEDIREKTORATET

33/9-A-11 AY1	19.03.1998	20.08.1998	PRODUCTION	OIL
33/9-A-11 AY2	21.08.1998	12.10.1998	PRODUCTION	OIL
33/9-A-11 AY3				
33/9-A-11 B	04.12.2014	13.02.2015	PRODUCTION	GAS
33/9-A-12	20.10.1980	10.12.1980	PRODUCTION	OIL
33/9-A-12 A	28.02.2004	13.03.2004	PRODUCTION	OIL
33/9-A-13	22.05.1984	30.07.1984	PRODUCTION	OIL
33/9-A-13 A	29.08.1999	01.09.1999	PRODUCTION	OIL
33/9-A-13 B	01.04.2002	20.04.2002	PRODUCTION	OIL
33/9-A-13 C	22.03.2014	02.05.2014	PRODUCTION	GAS
33/9-A-14	20.04.1982	18.05.1982	INJECTION	WATER
33/9-A-14 A	18.04.1999	03.06.1999	INJECTION	WATER
33/9-A-15	15.09.1985	08.10.1985	PRODUCTION	OIL
33/9-A-15 A	20.01.1995	14.03.1995	PRODUCTION	OIL
33/9-A-15 B	05.07.2000	12.07.2000	PRODUCTION	OIL
33/9-A-15 C	24.07.2002	28.05.2003	PRODUCTION	OIL
33/9-A-15 D	01.09.2008	29.09.2008	PRODUCTION	GAS
33/9-A-16	10.12.1980	21.01.1981	PRODUCTION	OIL
33/9-A-16 A	06.05.1996	27.06.1996	PRODUCTION	OIL
33/9-A-16 B	10.07.2006	10.05.2007	PRODUCTION	OIL
33/9-A-17	24.05.1985	14.07.1985	PRODUCTION	OIL
33/9-A-17 A	11.11.1999	09.12.1999	PRODUCTION	OIL
33/9-A-17 B	30.05.2008	14.06.2008	PRODUCTION	OIL
33/9-A-17 C	16.11.2012	25.02.2013	PRODUCTION	GAS
33/9-A-17 D	26.09.2015	21.10.2015	PRODUCTION	OIL/GAS
33/9-A-17 E	06.04.2017	22.04.2017	PRODUCTION	OIL
33/9-A-18	02.12.1981	14.02.1982	PRODUCTION	OIL
33/9-A-18 A	19.03.2000	05.04.2000	PRODUCTION	OIL
33/9-A-18 B	05.03.2003	17.03.2003	PRODUCTION	OIL
33/9-A-18 C	21.12.2008	08.01.2009	PRODUCTION	GAS
33/9-A-18 D	11.01.2009	27.01.2009	PRODUCTION	GAS
33/9-A-19	18.10.1981	08.12.1981	INJECTION	WATER
33/9-A-20	03.07.1980	24.08.1980	PRODUCTION	OIL
33/9-A-20 A	01.08.1990	11.08.1990	PRODUCTION	OIL
33/9-A-20 B	05.03.2011	25.03.2011	PRODUCTION	GAS
33/9-A-21	15.03.1992	15.03.1992	PRODUCTION	NOT APPLICABLE
33/9-A-22	17.06.1984	23.10.1984	INJECTION	WATER
33/9-A-22 A	23.09.1999	24.10.1999	PRODUCTION	OIL
33/9-A-23	12.03.1979	01.05.1979	PRODUCTION	OIL
33/9-A-23 A	24.12.1992	15.02.1993	PRODUCTION	OIL
33/9-A-23 B	10.07.2001	16.07.2001	PRODUCTION	OIL
33/9-A-23 C	26.05.2016	13.06.2016	PRODUCTION	OIL/GAS



NPD Factpages

Field

Printed: 30.9.2020 - 23:13

OLJEDIREKTORATET

33/9-A-24	29.08.1991	13.02.1992	PRODUCTION	OIL
33/9-A-24 A	24.10.2008	15.11.2008	PRODUCTION	OIL
33/9-A-25	17.02.1984	23.04.1984	INJECTION	WATER
33/9-A-25 A	28.11.1998	08.02.1999	INJECTION	WATER
33/9-A-25 B	01.09.2014	27.09.2014	PRODUCTION	GAS
33/9-A-26	14.10.1985	03.01.1986	INJECTION	WATER
33/9-A-26 A	24.04.2000	12.06.2000	PRODUCTION	OIL
33/9-A-26 B	24.03.2004	15.04.2004	PRODUCTION	OIL
33/9-A-27	14.04.1991	06.07.1991	PRODUCTION	DRY
33/9-A-27 A	20.10.1993	20.02.1994	PRODUCTION	OIL
33/9-A-27 B	28.12.1999	19.01.2000	PRODUCTION	OIL
33/9-A-27 C	08.07.2008	13.07.2008	PRODUCTION	OIL
33/9-A-28	18.03.1985	16.04.1985	PRODUCTION	OIL
33/9-A-28 A	28.02.2009	03.04.2009	PRODUCTION	OIL
33/9-A-29	01.05.1979	29.06.1979	PRODUCTION	OIL
33/9-A-29 A	26.07.2003	21.08.2003	PRODUCTION	OIL
33/9-A-30	25.04.1983	30.12.1983	INJECTION	WATER
33/9-A-30 A	19.05.2002	28.06.2002	PRODUCTION	OIL
33/9-A-31	25.07.1982	20.10.1982	PRODUCTION	OIL
33/9-A-31 A	23.06.1994	08.10.1994	PRODUCTION	OIL
33/9-A-32	24.03.1982	18.04.1982	PRODUCTION	OIL
33/9-A-32 A	29.03.1993	30.06.1993	PRODUCTION	OIL
33/9-A-32 B	25.11.2006	16.12.2006	PRODUCTION	OIL
33/9-A-33	09.01.1979	10.03.1979	PRODUCTION	OIL
33/9-A-33 A	09.12.2011	19.03.2012	PRODUCTION	OIL/GAS
33/9-A-34	05.07.1983	25.10.1983	PRODUCTION	OIL
33/9-A-34 A	24.07.1996	17.10.1996	PRODUCTION	OIL
33/9-A-34 B	30.03.2003	06.04.2003	PRODUCTION	OIL
33/9-A-34 C	17.04.2008	07.05.2008	PRODUCTION	OIL
33/9-A-35	24.03.1992	05.07.1992	PRODUCTION	OIL
33/9-A-35 A	26.10.1995	31.12.1995	PRODUCTION	OIL
33/9-A-35 B	02.01.2004	29.01.2004	PRODUCTION	OIL
33/9-A-36	21.07.1985	07.09.1985	INJECTION	WATER
33/9-A-36 A	02.03.2002	18.03.2002	INJECTION	GAS
33/9-A-37	25.11.1981	10.01.1982	PRODUCTION	OIL
33/9-A-37 A	23.04.1990	22.06.1990	PRODUCTION	OIL
33/9-A-37 B	04.10.2001	05.11.2001	PRODUCTION	OIL
33/9-A-37 C	15.09.2011	14.10.2011	PRODUCTION	OIL/GAS
33/9-A-38	29.06.1979	19.11.1979	PRODUCTION	OIL
33/9-A-38 A	01.09.1997	27.09.1997	INJECTION	WATER
33/9-A-38 B	19.06.2003	02.07.2003	INJECTION	WATER
33/9-A-38 C	14.07.2015	05.08.2015	PRODUCTION	OIL
33/9-A-39	05.07.1981	19.10.1981	INJECTION	GAS



33/9-A-40	01.02.1986	13.03.1986	PRODUCTION	OIL
33/9-A-40 A	25.11.1996	09.01.1997	PRODUCTION	OIL
33/9-A-40 B	31.07.2001	19.08.2001	PRODUCTION	OIL
33/9-A-40 C	22.06.2005	09.10.2005	PRODUCTION	OIL
33/9-A-40 D	09.01.2007	22.02.2007	PRODUCTION	OIL/GAS
33/9-A-41	04.04.1981	02.07.1981	PRODUCTION	OIL
33/9-A-41 A	13.12.1997	21.01.1998	PRODUCTION	OIL
33/9-A-42	22.01.1981	26.05.1981	INJECTION	GAS
33/9-A-42 A	27.07.2000	23.08.2000	INJECTION	WATER
33/9-A-42 B			PRODUCTION	
33/9-C-1	03.11.1987	22.04.1988	INJECTION	WATER
33/9-C-1 A	10.03.1996	15.04.1996	INJECTION	WATER
33/9-C-1 B	20.09.1999	07.10.1999	INJECTION	WATER/GAS
33/9-C-1 C	09.01.2012	15.04.2012	PRODUCTION	WATER
33/9-C-2	29.10.1992	13.02.1993	INJECTION	WATER
33/9-C-2 A	20.06.2020		PRODUCTION	
33/9-C-3	09.11.1990	12.04.1991	PRODUCTION	OIL
33/9-C-3 A	21.11.2008	28.12.2008	PRODUCTION	OIL
33/9-C-4	27.05.1987	22.07.1987	INJECTION	WATER
33/9-C-4 A	27.03.2001	10.04.2001	INJECTION	WATER
33/9-C-4 B	14.06.2003	03.07.2003	INJECTION	WATER/GAS
33/9-C-4 C	30.04.2014	14.06.2014	PRODUCTION	WATER/GAS
33/9-C-5	15.01.1987	01.03.1987	PRODUCTION	OIL
33/9-C-5 A	29.08.1999	04.09.1999	PRODUCTION	OIL
33/9-C-5 B	18.07.2003	28.07.2003	PRODUCTION	OIL
33/9-C-5 C	13.06.2008	18.07.2008	PRODUCTION	OIL
33/9-C-6	29.08.1987	22.10.1987	PRODUCTION	OIL
33/9-C-6 A	21.12.2005	05.01.2006	PRODUCTION	OIL
33/9-C-7	18.10.1985	19.11.1985	PRODUCTION	OIL
33/9-C-7 A	05.01.2003	13.01.2003	PRODUCTION	OIL
33/9-C-7 B	15.10.2013	30.10.2013	PRODUCTION	OIL
33/9-C-8	13.03.1997	04.04.1997	PRODUCTION	OIL
33/9-C-8 A	15.03.2003	15.04.2003	PRODUCTION	OIL
33/9-C-8 B	30.05.2019	23.06.2019	PRODUCTION	OIL/GAS
33/9-C-9	07.06.1986	04.07.1986	INJECTION	WATER
33/9-C-9 A	02.12.2012	17.03.2013	PRODUCTION	WATER
33/9-C-10	19.10.1989	14.12.1989	INJECTION	WATER/GAS
33/9-C-10 A	26.12.1989	05.01.1990	INJECTION	WATER/GAS
33/9-C-10 B	23.05.2017	07.06.2017	PRODUCTION	OIL/GAS
33/9-C-11	24.07.1990	13.09.1990	PRODUCTION	OIL
33/9-C-11 A	28.01.1997	12.02.1997	INJECTION	WATER
33/9-C-11 B	10.09.2002	26.09.2002	PRODUCTION	OIL
33/9-C-11 C	31.08.2017	25.09.2017	PRODUCTION	WATER



33/9-C-11 D	13.06.2018	27.06.2018	PRODUCTION	OIL/GAS
33/9-C-12	08.08.1985	17.09.1985	PRODUCTION	OIL
33/9-C-12 A	24.09.1998	18.10.1998	PRODUCTION	OIL
33/9-C-12 B	19.10.1998	15.12.1998	PRODUCTION	OIL
33/9-C-12 C	31.01.2004	09.02.2004	PRODUCTION	OIL
33/9-C-12 D	06.08.2007	04.09.2007	PRODUCTION	GAS
33/9-C-12 E	17.10.2017	11.11.2017	PRODUCTION	OIL/GAS
33/9-C-13	13.05.1985	13.06.1985	INJECTION	WATER/GAS
33/9-C-13 A	01.09.2012	14.09.2012	PRODUCTION	OIL
33/9-C-13 B	22.05.2018	01.06.2018	PRODUCTION	OIL/GAS
33/9-C-14	29.11.1985	10.01.1986	INJECTION	WATER
33/9-C-14 A	08.12.2002	22.12.2002	INJECTION	WATER/GAS
33/9-C-14 B	11.09.2020		PRODUCTION	
33/9-C-15	25.10.1988	10.12.1988	PRODUCTION	OIL
33/9-C-15 A	31.12.2000	27.01.2001	PRODUCTION	OIL
33/9-C-15 B	10.03.2009	25.03.2009	PRODUCTION	OIL/GAS
33/9-C-16	22.03.1986	04.05.1986	PRODUCTION	OIL
33/9-C-17	20.01.1996	09.02.1996	PRODUCTION	OIL
33/9-C-17 A	17.11.2013	30.11.2013	PRODUCTION	OIL
33/9-C-18	25.01.1995	30.04.1995	PRODUCTION	OIL
33/9-C-18 A	21.04.1999	09.05.1999	PRODUCTION	OIL
33/9-C-18 B	20.11.2016	06.12.2016	PRODUCTION	OIL/GAS
33/9-C-19	16.08.1986	29.09.1986	INJECTION	WATER
33/9-C-19 A	16.11.1997	07.01.1998	PRODUCTION	DRY
33/9-C-19 B	23.02.1999	31.03.1999	PRODUCTION	OIL
33/9-C-19 C	23.11.2001	04.12.2001	PRODUCTION	OIL
33/9-C-19 D	06.11.2009	21.11.2009	PRODUCTION	OIL/GAS
33/9-C-20	08.04.1992	28.04.1992	PRODUCTION	OIL
33/9-C-20 A	28.07.2014	20.08.2014	PRODUCTION	OIL
33/9-C-21	10.01.1985	09.05.1985	PRODUCTION	OIL
33/9-C-21 A	17.09.2009	23.09.2009	PRODUCTION	OIL/GAS
33/9-C-22	30.05.1995	07.07.1995	PRODUCTION	OIL
33/9-C-22 A	31.03.2020	12.05.2020	OBSERVATION	
33/9-C-23	28.04.1997	08.06.1997	PRODUCTION	OIL
33/9-C-23 A	09.06.1997	01.07.1997	PRODUCTION	OIL
33/9-C-23 B	29.07.1999	07.08.1999	PRODUCTION	OIL
33/9-C-23 C	20.11.2003	08.12.2003	PRODUCTION	OIL
33/9-C-23 D	12.07.2012	10.08.2012	PRODUCTION	GAS
33/9-C-24	31.05.1992	08.08.1992	PRODUCTION	OIL
33/9-C-25	06.10.1986	08.11.1986	INJECTION	WATER
33/9-C-25 A	23.01.2014	24.03.2014	PRODUCTION	WATER
33/9-C-26	30.07.1987	25.08.1987	PRODUCTION	OIL
33/9-C-26 A	30.04.2001	12.05.2001	PRODUCTION	OIL



NPD Factpages

Field

Printed: 30.9.2020 - 23:13

OLJEDIREKTORATET

33/9-C-26 B	08.05.2003	01.06.2003	PRODUCTION	OIL
33/9-C-26 C	12.03.2015	07.04.2015	PRODUCTION	OIL
33/9-C-27	29.11.1991	03.02.1992	PRODUCTION	OIL
33/9-C-27 A	25.12.2001	23.01.2002	PRODUCTION	OIL
33/9-C-27 B	28.11.2007	30.12.2007	PRODUCTION	OIL
33/9-C-27 C	22.07.2020	24.08.2020	PRODUCTION	OIL/GAS
33/9-C-28	22.09.1985	14.10.1985	PRODUCTION	OIL
33/9-C-28 A	25.10.1995	26.10.1995	PRODUCTION	OIL
33/9-C-28 B	27.10.1995	02.11.1995	PRODUCTION	OIL
33/9-C-28 C	13.05.2009	25.05.2009	PRODUCTION	OIL/GAS
33/9-C-29	13.10.1996	29.12.1996	PRODUCTION	OIL
33/9-C-29 A	20.09.2005	02.11.2005	PRODUCTION	OIL
33/9-C-30	19.03.1987	03.05.1987	INJECTION	WATER
33/9-C-30 A	15.01.1999	10.02.1999	INJECTION	WATER
33/9-C-30 B	26.04.2013	23.06.2013	PRODUCTION	WATER
33/9-C-31	26.11.1986	07.01.1987	PRODUCTION	OIL
33/9-C-31 A	30.08.2003	19.09.2003	PRODUCTION	OIL
33/9-C-31 B	23.01.2008	11.02.2008	PRODUCTION	OIL
33/9-C-32	08.05.1986	29.05.1986	PRODUCTION	OIL
33/9-C-32 A	22.10.1999	30.10.1999	PRODUCTION	OIL
33/9-C-32 B	08.04.2009	25.04.2009	PRODUCTION	OIL/GAS
33/9-C-33	05.01.1985	11.02.1985	PRODUCTION	OIL
33/9-C-34	21.12.1984	20.03.1985	INJECTION	GAS
33/9-C-34 A	14.03.2002	02.04.2002	INJECTION	WATER
33/9-C-35	13.02.1986	11.03.1986	INJECTION	WATER
33/9-C-35 A	04.10.2014	05.12.2015	PRODUCTION	GAS
33/9-C-36	15.04.1989	29.05.1989	PRODUCTION	OIL
33/9-C-36 A	14.01.2015	27.01.2015	PRODUCTION	OIL/GAS
33/9-C-37	09.07.1986	11.08.1986	PRODUCTION	OIL
33/9-C-37 A	17.11.1999	28.11.1999	PRODUCTION	OIL
33/9-C-37 B	04.10.2008	27.10.2008	PRODUCTION	OIL/GAS
33/9-C-38	26.03.1985	11.04.1985	PRODUCTION	OIL
33/9-C-38 A	10.04.2002	23.04.2002	PRODUCTION	OIL
33/9-C-38 B	13.06.2004	22.06.2004	PRODUCTION	OIL
33/9-C-38 C	02.01.2005	14.02.2005	PRODUCTION	OIL
33/9-C-38 D	23.04.2015	10.05.2015	PRODUCTION	GAS
33/9-C-39	26.06.1991	08.09.1991	PRODUCTION	OIL
33/9-C-39 A	03.10.2012	15.10.2012	PRODUCTION	GAS
33/9-C-40	30.06.1989	22.09.1989	PRODUCTION	OIL
33/9-C-40 A	16.06.1999	09.07.1999	PRODUCTION	OIL
33/9-C-40 B	24.05.2002	19.06.2002	PRODUCTION	OIL
33/9-C-40 C	26.06.2007	19.07.2007	PRODUCTION	OIL/GAS
33/9-C-41	15.11.1995	29.12.1995	PRODUCTION	OIL



NPD Factpages

Field

Printed: 30.9.2020 - 23:13

OLJEDIREKTORATET

33/9-C-41 A	10.10.2002	27.10.2002	PRODUCTION	OIL
33/9-C-41 B	13.07.2017	06.08.2017	PRODUCTION	OIL/GAS
33/9-C-42	19.06.1985	01.08.1985	PRODUCTION	OIL
33/9-C-42 A	10.01.1998	05.03.1998	PRODUCTION	OIL
33/9-G-3 H	09.12.1996	23.07.1999	PRODUCTION	OIL
33/9-G-4 H	26.01.1999	02.03.1999	OBSERVATION	NOT APPLICABLE
33/9-G-4 AH	04.03.1999	10.03.1999	PRODUCTION	OIL
33/12-B-1	05.04.1985	18.05.1985	INJECTION	WATER
33/12-B-1 A	29.02.2000	19.03.2000	OBSERVATION	NOT APPLICABLE
33/12-B-1 B	23.03.2000	01.04.2000	INJECTION	WATER
33/12-B-1 C	20.09.2007	19.10.2007	PRODUCTION	OIL/GAS
33/12-B-1 D	10.10.2018	05.11.2018	PRODUCTION	OIL/GAS
33/12-B-2	19.08.1991	07.02.1992	INJECTION	NOT APPLICABLE
33/12-B-2 A	10.09.1992	03.11.1992	INJECTION	WATER
33/12-B-2 B	08.02.1996	04.04.1996	PRODUCTION	OIL
33/12-B-2 C	14.04.2001	30.04.2001	PRODUCTION	OIL
33/12-B-2 D	15.09.2010	30.09.2010	PRODUCTION	GAS
33/12-B-3	19.11.1983	27.12.1983	PRODUCTION	OIL
33/12-B-3 A	19.12.2001	01.01.2002	PRODUCTION	OIL
33/12-B-3 B	22.03.2014	11.05.2014	PRODUCTION	GAS
33/12-B-4	08.01.1985	22.02.1985	INJECTION	WATER
33/12-B-4 A	20.07.2002	05.08.2002	INJECTION	WATER
33/12-B-4 B	19.09.2013	20.10.2013	PRODUCTION	WATER/GAS
33/12-B-5	26.07.1985	23.08.1985	PRODUCTION	OIL
33/12-B-5 A	01.04.2013	20.04.2013	PRODUCTION	GAS
33/12-B-5 B	04.12.2019	27.12.2019	INJECTION	WATER
33/12-B-6	30.04.1986	30.05.1986	PRODUCTION	OIL
33/12-B-6 A	27.06.1996	04.07.1996	PRODUCTION	OIL
33/12-B-6 B	06.07.1999	08.02.2000	PRODUCTION	OIL
33/12-B-6 C	23.04.2016	11.05.2016	PRODUCTION	OIL/GAS
33/12-B-7	07.01.1984	16.07.1984	PRODUCTION	OIL
33/12-B-7 A	18.09.2012	11.10.2012	PRODUCTION	GAS
33/12-B-8	29.09.1983	31.12.1983	INJECTION	WATER
33/12-B-8 A	01.04.2012	06.07.2012	PRODUCTION	GAS/CONDENSATE
33/12-B-8 B	04.11.2012	16.11.2012	PRODUCTION	GAS
33/12-B-9	23.02.1984	15.04.1984	INJECTION	WATER
33/12-B-10	21.10.1984	14.11.1984	PRODUCTION	OIL
33/12-B-10 A	18.08.1995	28.09.1995	PRODUCTION	OIL
33/12-B-10 B	12.09.2015	05.10.2015	PRODUCTION	OIL/GAS/CONDENSATE
33/12-B-11	27.02.1992	12.06.1992	PRODUCTION	OIL



33/12-B-11 A	29.04.2000	10.05.2000	PRODUCTION	OIL
33/12-B-11 B	06.01.2001	01.02.2001	PRODUCTION	OIL
33/12-B-11 C	16.03.2007	24.04.2007	PRODUCTION	GAS
33/12-B-11 D	28.12.2015	13.01.2016	PRODUCTION	OIL/GAS
33/12-B-12	03.04.1994	14.05.1994	PRODUCTION	OIL
33/12-B-12 A	03.03.2008	16.04.2008	PRODUCTION	OIL
33/12-B-13	24.09.1985	02.11.1985	PRODUCTION	OIL
33/12-B-13 A	14.04.2005	09.05.2005	PRODUCTION	OIL
33/12-B-14	13.01.1986	25.02.1986	INJECTION	WATER
33/12-B-14 A	09.04.1997	05.05.1997	INJECTION	WATER
33/12-B-14 B	25.09.2001	05.10.2001	OBSERVATION	NOT APPLICABLE
33/12-B-14 C	07.10.2001	26.10.2001	INJECTION	WATER
33/12-B-15	12.01.1994	07.03.1994	PRODUCTION	OIL
33/12-B-15 A	19.01.2002	17.02.2002	PRODUCTION	OIL
33/12-B-15 B	28.05.2016	16.06.2016	PRODUCTION	OIL/GAS
33/12-B-16	14.10.1993	13.11.1993	PRODUCTION	OIL
33/12-B-16 A	19.11.1993	02.01.1994	PRODUCTION	OIL
33/12-B-16 B	21.10.1998	15.11.1998	PRODUCTION	OIL
33/12-B-16 C	03.09.2004	04.12.2004	PRODUCTION	OIL
33/12-B-16 D	19.02.2017	11.03.2017	PRODUCTION	OIL/GAS
33/12-B-17	21.10.1982	09.12.1982	PRODUCTION	OIL
33/12-B-17 A	17.09.2006	11.08.2007	PRODUCTION	OIL
33/12-B-18	09.04.1983	20.06.1983	INJECTION	GAS
33/12-B-18 A	15.10.2003	11.11.2003	INJECTION	WATER
33/12-B-18 B	09.02.2019	18.03.2019	INJECTION	WATER/GAS
33/12-B-19	29.12.1989	14.02.1990	PRODUCTION	OIL
33/12-B-19 A	11.08.2000	28.09.2000	PRODUCTION	OIL
33/12-B-19 B	09.08.2015	30.08.2015	PRODUCTION	OIL/GAS
33/12-B-20	16.06.1986	10.07.1986	PRODUCTION	OIL
33/12-B-20 A	18.02.2006	11.03.2006	PRODUCTION	OIL
33/12-B-21	13.01.1983	03.03.1983	PRODUCTION	OIL
33/12-B-21 A	06.07.2000	27.07.2000	PRODUCTION	OIL
33/12-B-21 B	24.11.2000	02.12.2000	PRODUCTION	OIL
33/12-B-21 C	12.07.2016	26.07.2016	PRODUCTION	OIL
33/12-B-21 D	13.06.2020	06.07.2020	PRODUCTION	OIL/GAS
33/12-B-22	05.03.1986	28.03.1986	PRODUCTION	OIL
33/12-B-22 A	19.05.1997	26.05.1997	PRODUCTION	OIL
33/12-B-22 B	09.11.2005	13.05.2006	PRODUCTION	OIL
33/12-B-22 C	22.04.2017	04.07.2017	PRODUCTION	OIL/GAS
33/12-B-23	12.10.1982	03.01.1983	PRODUCTION	OIL
33/12-B-23 A	07.08.1996	10.09.1996	PRODUCTION	OIL
33/12-B-23 B	16.02.2003	02.03.2003	PRODUCTION	OIL



NPD Factpages

Field

Printed: 30.9.2020 - 23:13

33/12-B-23 C	09.03.2010	10.04.2010	PRODUCTION	GAS
33/12-B-23 D	06.03.2016	23.03.2016	PRODUCTION	OIL/GAS
33/12-B-24	11.04.1982	31.10.1982	PRODUCTION	OIL
33/12-B-24 A	12.08.1998	25.08.1998	PRODUCTION	OIL
33/12-B-24 B	10.11.2013	09.12.2013	PRODUCTION	GAS
33/12-B-24 C	07.02.2016	20.02.2016	PRODUCTION	OIL/GAS
33/12-B-25	23.09.1984	20.10.1984	INJECTION	WATER
33/12-B-25 A	27.12.2009	10.02.2010	PRODUCTION	GAS/CONDE NSATE
33/12-B-26	18.11.1984	01.01.1985	INJECTION	WATER
33/12-B-26 A	29.09.2002	18.10.2002	INJECTION	WATER
33/12-B-26 B	01.05.2010	13.05.2010	PRODUCTION	GAS
33/12-B-27	13.04.1993	22.07.1993	PRODUCTION	OIL
33/12-B-27 A	24.07.2004	15.08.2004	PRODUCTION	OIL
33/12-B-27 B	01.04.2018	30.04.2018	PRODUCTION	OIL/GAS
33/12-B-28	18.09.1989	05.11.1989	PRODUCTION	OIL
33/12-B-28 A	09.05.1990	05.06.1990	PRODUCTION	OIL
33/12-B-28 B	30.01.1997	19.02.1997	OBSERVATION	NOT APPLICABLE
33/12-B-28 C	20.02.1997	09.03.1997	PRODUCTION	OIL
33/12-B-28 D	24.01.2018	27.02.2018	PRODUCTION	OIL/GAS
33/12-B-29	29.11.1992	11.02.1993	PRODUCTION	OIL
33/12-B-30	27.12.1983	05.09.1984	INJECTION	WATER
33/12-B-30 A	21.12.2003	02.03.2004	INJECTION	WATER/GAS
33/12-B-30 B	04.01.2013	27.02.2013	PRODUCTION	WATER/GAS
33/12-B-31	09.03.1985	01.04.1985	PRODUCTION	OIL
33/12-B-31 A	22.11.2003	30.11.2003	PRODUCTION	OIL
33/12-B-31 B	13.09.2009	19.10.2009	PRODUCTION	GAS/CONDE NSATE
33/12-B-32	04.03.1983	08.04.1983	PRODUCTION	OIL
33/12-B-33	07.12.1994	17.01.1995	PRODUCTION	OIL
33/12-B-34	22.08.1982	05.11.1982	INJECTION	GAS
33/12-B-34 A	24.11.2015	12.12.2015	PRODUCTION	OIL/GAS
33/12-B-35	02.12.1985	04.01.1986	PRODUCTION	OIL
33/12-B-35 A	18.09.1998	08.10.1998	PRODUCTION	OIL
33/12-B-35 B	20.06.2013	17.07.2013	PRODUCTION	GAS
33/12-B-36	20.04.1995	26.05.1995	PRODUCTION	OIL
33/12-B-36 A	16.05.2001	27.07.2001	PRODUCTION	OIL
33/12-B-36 B	15.08.2016	29.08.2016	PRODUCTION	OIL
33/12-B-37	09.06.1983	09.08.1983	PRODUCTION	OIL
33/12-B-37 A	11.11.2002	24.11.2002	PRODUCTION	OIL
33/12-B-37 B	10.06.2010	01.07.2010	PRODUCTION	GAS/CONDE NSATE
33/12-B-38	05.07.1982	16.08.1982	INJECTION	OIL



Field

33/12-B-38 A	17.06.1997	13.07.1997	INJECTION	GAS
33/12-B-38 B	05.05.2017	18.06.2017	INJECTION	WATER/GAS
33/12-B-39	02.06.1985	19.07.1985	PRODUCTION	OIL
33/12-B-39 A	10.04.1998	15.05.1998	PRODUCTION	GAS
33/12-B-39 B	16.05.1998	26.06.1998	PRODUCTION	OIL
33/12-B-39 C	22.04.2020	27.07.2020	INJECTION	WATER/GAS
33/12-B-40	02.07.1988	15.10.1988	PRODUCTION	OIL
33/12-B-40 A	24.05.2000	23.06.2000	PRODUCTION	OIL
33/12-B-40 B	08.11.2001	23.11.2001	OBSERVATION	NOT APPLICABLE
33/12-B-40 C	25.11.2001	03.12.2001	PRODUCTION	OIL
33/12-B-40 D	18.01.2005	20.03.2005	PRODUCTION	OIL
33/12-B-40 E	22.11.2007	11.01.2008	PRODUCTION	OIL
33/12-B-41	26.08.1983	18.11.1983	INJECTION	WATER
33/12-B-41 A	19.05.1996	01.06.1996	PRODUCTION	OIL
33/12-B-41 B	03.09.2014	06.10.2014	PRODUCTION	GAS
33/12-B-42	03.08.1994	11.10.1994	PRODUCTION	OIL
33/12-B-42 A	28.06.2006	10.01.2007	PRODUCTION	OIL/GAS
33/12-B-42 B	04.06.2014	21.07.2014	PRODUCTION	GAS

Wellbores - other

Wellbore name	Entered date	Completed date	Purpose	Status
33/12-U-1				WILL NEVER BE DRILLED