

General information

Field name	TROLL
Factmaps in new window	link
Current activity status	Producing
Discovery wellbore	31/2-1
Discovery year.	1979
Main area	North Sea
Main supply base	Mongstad
NPDID field	46437

Picture

Discoveries included

Discovery name
31/2-1 (Troll Vest)
31/6-1 (Troll Øst)

Activity status - history

Status	Status from	Status to
Producing	19.09.1995	
Approved for production	15.12.1986	18.09.1995

Located in

Block name	Prod. licence
31/2	054
31/3	085
31/5	085
31/6	085
31/3	085 C
31/6	085 C

Owner - current

Owner kind	Owner name
BUSINESS ARRANGEMENT AREA	TROLL UNIT

Operatorship - current



Company name

[Equinor Energy AS](#)

Licensees - current

Company name	Nation code	Company share [%]
Petoro AS	NO	56.000000
Equinor Energy AS	NO	30.583850
A/S Norske Shell	NO	8.101450
Total E&P Norge AS	NO	3.690960
ConocoPhillips Skandinavia AS	NO	1.623740

The NPD estimate for reserves (Norwegian share)

Valid date: 31.12.2019

Orig. recoverable oil [mill Sm3]	Orig. recoverable gas [bill Sm3]	Orig. recoverable NGL [mill tonn]	Orig. recoverable cond. [mill Sm3]	Orig. recoverable oil eq. [mill Sm3 o.e]
289.33	1433.18	23.26	1.52	1768.22

Remaining oil [mill Sm3]	Remaining gas [bill Sm3]	Remaining NGL [mill tonn]	Remaining cond. [mill Sm3]	Remaining oil eq. [mill Sm3 o.e]
11.49	753.30	12.09	0.00	787.76

Orig. inplace oil [mill Sm3]	Orig. inplace ass. liquid [mill Sm3]	Orig. inplace ass. gas [bill Sm3]	Orig. inplace free gas [bill Sm3]
664.00	86.00	38.00	1625.00

Description



Type	Text	Date updated
Development	<p>Troll is a field in the northern part of the North Sea. The water depth is 300-330 metres. Troll was discovered in 1979, and the initial plan for development and operation (PDO) was approved in 1986. The plan was updated in 1990 and involved the transfer of gas processing to the Kollsnes terminal. Production started in 1995. A phased development was pursued for the Troll field, with Phase I recovering gas reserves in Troll Øst and Phase II focusing on the oil reserves in Troll Vest. Troll Phase I has been developed with Troll A, which is a fixed wellhead and compression facility with a concrete substructure. Troll A receives power from shore. The gas compression capacity at Troll A was increased in 2004/2005, and again in 2015. Troll Phase II was developed with Troll B, a floating concrete accommodation and production facility, and Troll C, a semi-submersible accommodation and production steel facility. The oil is produced from several subsea templates tied-back to Troll B and Troll C by pipelines. Production from Troll C started in 1999. The Troll C facility is also utilised for production from the Fram field. Several PDO amendments were approved in connection with various subsea templates at Troll Vest. The latest PDO amendment was approved in December 2018 for the Troll Phase III development: gas blowdown in Troll Vest.</p>	14.02.2020
Reservoir	<p>Troll contains very large amounts of gas resources and is also one of the largest oil producing fields on the Norwegian continental shelf. The field has two main structures: Troll Øst and Troll Vest. About two-thirds of the recoverable gas reserves lie in Troll Øst. The gas and oil reservoirs in the Troll Øst and Troll Vest structures consist primarily of shallow marine sandstone of Late Jurassic age in the Sognefjord Formation. Part of the reservoir is also in the underlying Fensfjord Formation of Middle Jurassic age. The field consists of three relatively large rotated fault blocks. The eastern fault block constitutes Troll Øst. The reservoir depth at Troll Øst is 1,330 metres. Pressure communication between Troll Øst and Troll Vest has been proven. Originally, the oil column in Troll Øst was mapped to be 0-4 metres thick. A well drilled in 2007 proved an oil column of 6-9 metres in the Fensfjord Formation in the northern segment of Troll Øst. The Troll Vest oil province originally had a 22 to 26-metre-thick oil column under a small gas cap, located at a depth of 1,360 metres. The Troll Vest gas province originally had an oil column of 12-14 metres under a gas column of up to 200 metres. The oil column is now reduced to only 2 to 4 metres thickness. A significant volume of residual oil is encountered directly below the Troll Vest oil column. There is a minor oil discovery in the Middle Jurassic Brent Group, below the main oil reservoir.</p>	14.02.2020
Recovery	<p>The gas in Troll Øst is recovered by pressure depletion through 39 wells drilled from Troll A. The oil in Troll Vest is produced from long horizontal wells, which penetrate the thin oil zone directly above the oil-water contact. The recovery strategy is based primarily on pressure depletion, but this is accompanied by a simultaneous expansion of both the gas cap above the oil zone and the underlying water zone. Some gas is also reinjected to increase oil production. Produced water was reinjected into the northern part of the Troll Vest oil province from 2000 to 2016.</p>	25.04.2019



Status	There are currently three drilling rigs on the field, continuously drilling horizontal oil production wells from the subsea templates on Troll Vest. About 180 production wells and more than one million reservoir metres have been drilled so far. Technology development has resulted in through-Xmas tree drilling with two branches since summer 2017. A new gas compressor module started operation on Troll B in late 2018, and has increased gas processing capacity and total recoverable reserves. Another gas compressor module will be installed on Troll C, with start-up in early 2020. Both the Troll field and the tied-in field Fram will benefit from the module. Troll Phase III is under development and expected to come on stream in 2021.	14.02.2020
Transport	The gas from Troll Øst and Troll Vest is transported through three multiphase pipelines to the gas processing plant at Kollsnes. The condensate is separated from the gas and transported by pipeline to the Mongstad terminal. The dry gas is transported in Zeepipe II A and II B to Zeebrugge in Belgium. The oil from Troll B and Troll C is transported in the Troll Oil Pipelines I and II, respectively, to the oil terminal at Mongstad.	11.04.2017

Investments (expected)

Future investments from 2019 [mill NOK 2019-kroner] : 44747

Investments (historical)

	Investments [mill NOK nominal values]
Sum	203907
2018	9499
2017	8967
2016	9784
2015	10030
2014	12734
2013	13040
2012	9233
2011	8663
2010	7628
2009	7752
2008	6130
2007	4225
2006	3217
2005	3202
2004	3471
2003	4067
2002	3590
2001	4583
2000	4421
1999	6671



1998	7836
1997	3747
1996	3268
1995	10887
1994	15964
1993	11358
1992	5067
1991	1466
1990	1023
1989	1631
1988	598
1987	111
1986	44

Production , saleable



NPD Factpages

Field

Printed: 22.10.2020 - 08:55

	Month	Net - oil [mill Sm3]	Net - gas [bill Sm3]	Net - condensate [mill Sm3]	Net - NGL [mill Sm3]	Net - oil equivalents [mill Sm3]
Sum		279.503542	677.623338	4.336981	19.917350	981.381211
2020		3.080094	19.433032	0.000000	0.773486	23.286612
2019		6.258794	31.539172	0.000000	1.196695	38.994661
2018		6.410338	38.554790	0.000000	1.481107	46.446235
2017		7.243926	36.744024	0.000000	1.467838	45.455788
2016		7.348277	31.870987	0.000000	1.281961	40.501225
2015		7.014225	34.633036	0.000000	1.337468	42.984729
2014		7.297566	29.045362	0.000000	1.229872	37.572800
2013		7.096653	29.633672	0.000000	1.234984	37.965309
2012		7.100418	34.407045	0.000000	1.410960	42.918423
2011		7.264058	24.795676	0.000000	0.929534	32.989268
2010		6.869503	28.555833	0.000000	1.072321	36.497657
2009		7.849241	24.401123	0.000000	1.065454	33.315818
2008		8.168300	29.738551	0.000000	1.074746	38.981597
2007		9.425518	35.779575	0.000000	1.369338	46.574431
2006		10.819943	30.700516	0.000000	1.400218	42.920677
2005		14.092675	28.339581	0.000000	1.309736	43.741992
2004		17.763824	26.361623	0.449720	0.281632	44.856799
2003		20.820795	26.169063	1.512246	0.000000	48.502104
2002		21.194248	25.581420	0.767708	0.000000	47.543376
2001		19.502882	21.433229	0.639472	0.000000	41.575583
2000		18.361509	24.665884	0.750300	0.000000	43.777693
1999		12.908774	25.461365	0.217535	0.000000	38.587674
1998		13.253887	19.954323	0.000000	0.000000	33.208210
1997		14.767039	14.317157	0.000000	0.000000	29.084196
1996		13.323611	5.507299	0.000000	0.000000	18.830910
1995		2.856165	0.000000	0.000000	0.000000	2.856165
1994		0.060584	0.000000	0.000000	0.000000	0.060584
1993		0.060122	0.000000	0.000000	0.000000	0.060122
1992		0.063210	0.000000	0.000000	0.000000	0.063210
1991		0.176052	0.000000	0.000000	0.000000	0.176052
1990		1.051311	0.000000	0.000000	0.000000	1.051311

Production , sum wellbores



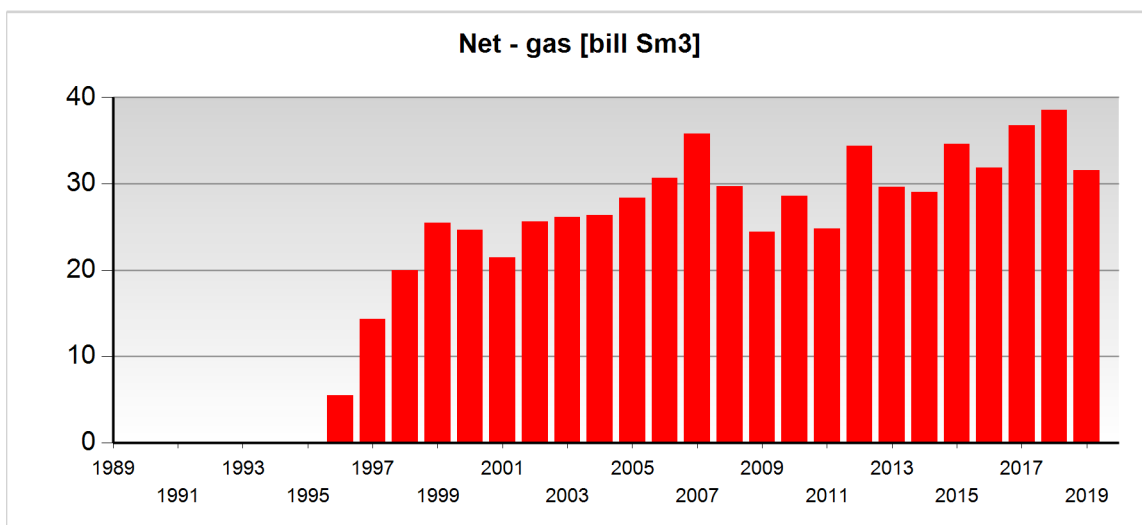
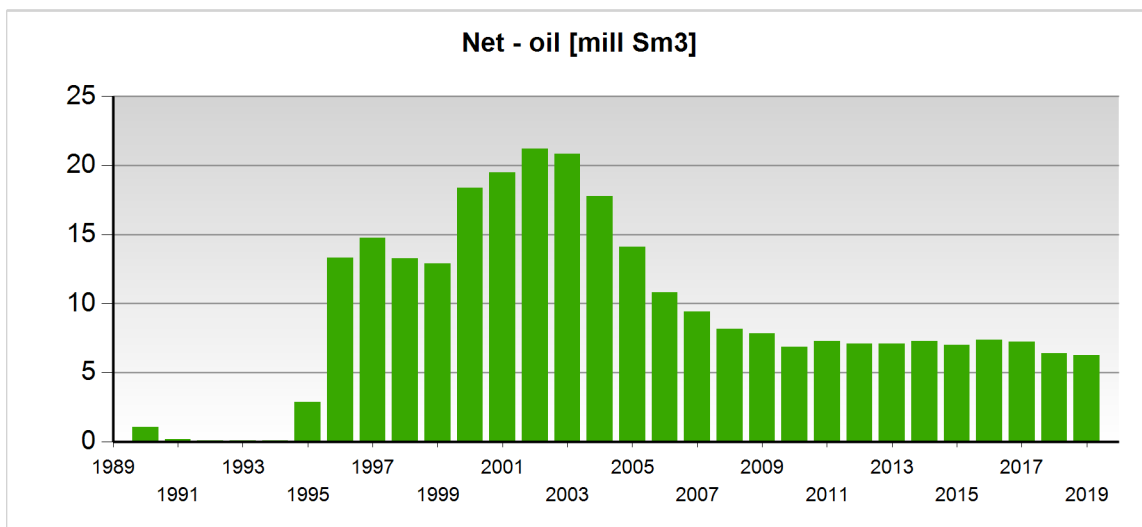
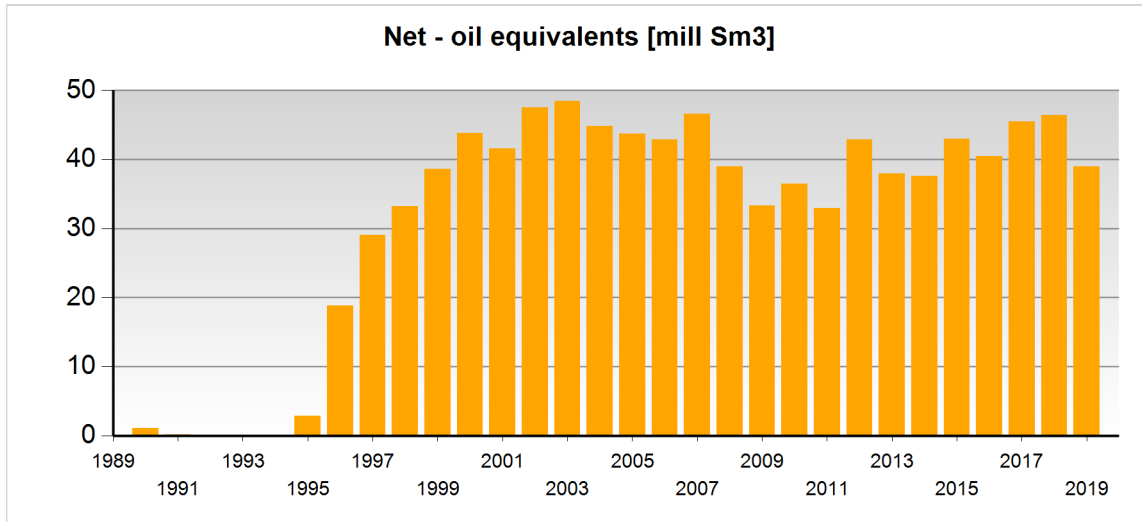
NPD Factpages

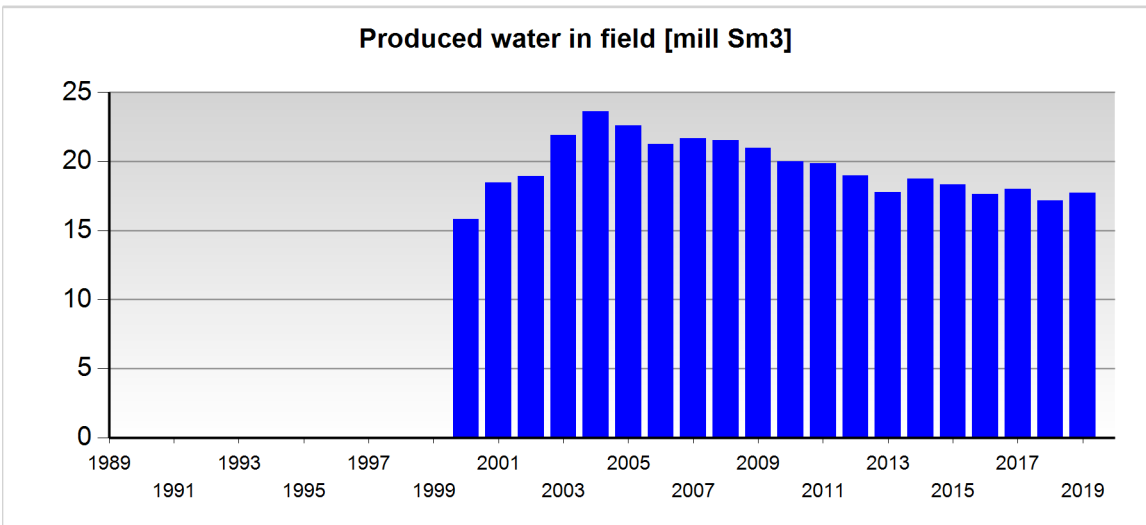
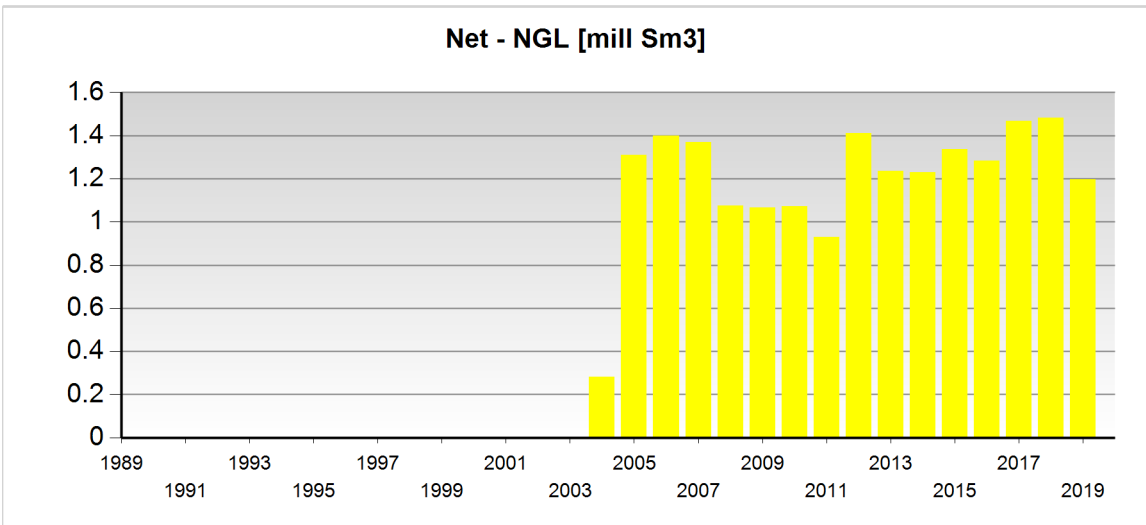
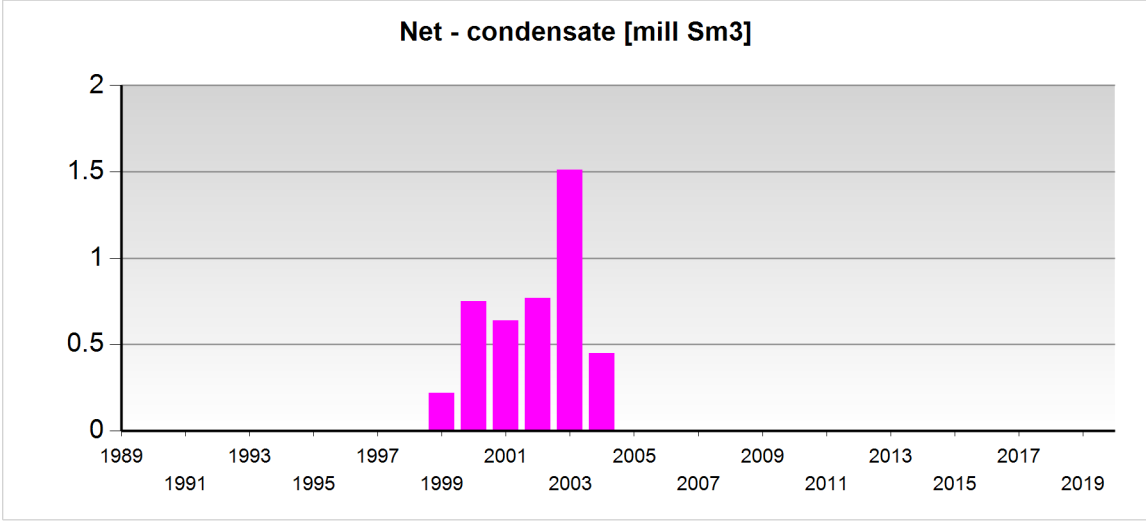
Field

Printed: 22.10.2020 - 08:55

	Month	Gross - oil [mill Sm3]	Gross - gas [bill Sm3]	Gross - condensate [mill Sm3]	Gross - oil equivalents [mill Sm3]
Sum		281.264220	729.653994	24.511371	1035.429585
2020		2.993830	20.655889	0.658403	24.308122
2019		6.200099	33.922180	1.125389	41.247668
2018		6.502598	40.685710	1.385143	48.573451
2017		7.384678	39.122667	1.373776	47.881121
2016		7.548823	34.293526	1.197189	43.039538
2015		7.245365	36.849054	1.331233	45.425652
2014		7.455175	30.960997	1.217745	39.633917
2013		7.188952	30.851459	1.234186	39.274597
2012		7.145524	35.712974	1.408297	44.266795
2011		7.356829	25.934871	0.931720	34.223420
2010		6.968235	28.922218	1.070464	36.960917
2009		7.924823	25.087567	1.077705	34.090095
2008		8.359859	30.631988	1.081355	40.073202
2007		9.610627	36.947890	1.372834	47.931351
2006		11.234736	31.588795	1.403517	44.227048
2005		14.226591	29.237897	1.313743	44.778231
2004		18.209670	26.892045	0.731352	45.833067
2003		21.074094	26.749771	0.638312	48.462177
2002		21.444962	26.374841	0.657794	48.477597
2001		19.559256	23.036154	0.553671	43.149081
2000		18.419033	26.699789	0.650786	45.769608
1999		12.584980	26.545612	0.642286	39.772878
1998		12.826140	21.942577	0.538932	35.307649
1997		14.541928	15.979548	0.416773	30.938249
1996		13.204408	8.430291	0.193570	21.828269
1995		2.871300	2.225937	0.046057	5.143294
1994		0.000000	3.309587	0.067864	3.377451
1993		0.000000	3.390223	0.067879	3.458102
1992		0.000000	3.922517	0.070689	3.993206
1991		0.124637	2.666053	0.052707	2.843397
1990		1.057068	0.083367	0.000000	1.140435

Production - charts





Any produced water is only included after 1.1.2000

Wellbores - exploration



NPD Factpages

Field

Printed: 22.10.2020 - 08:55

OLJEDIREKTORATET

Wellbore name	Entered date	Completed date	Purpose	Status	Content
31/2-1	17.07.1979	09.11.1979	WILDCAT	SUSPENDED	OIL/GAS
31/2-1 R	26.10.1981	09.11.1981	WILDCAT	P&A	OIL/GAS
31/2-2	27.02.1980	23.04.1980	APPRAISAL	SUSPENDED	OIL/GAS
31/2-2 R	02.06.1980	06.10.1980	APPRAISAL	P&A	OIL/GAS
31/2-3	28.03.1980	20.07.1980	APPRAISAL	P&A	OIL/GAS
31/2-4	01.09.1980	13.09.1980	APPRAISAL	SUSPENDED	DRY
31/2-4 R	09.10.1980	06.04.1981	APPRAISAL	SUSPENDED	OIL/GAS
31/2-4 R2	04.11.1982	12.11.1982	APPRAISAL	P&A	OIL/GAS
31/2-5	26.10.1980	21.12.1980	APPRAISAL	SUSPENDED	OIL/GAS
31/2-5 R	12.06.1981	20.07.1981	APPRAISAL	SUSPENDED	OIL/GAS
31/2-5 R2	22.03.1984	22.04.1984	APPRAISAL	P&A	OIL/GAS
31/2-6	21.07.1981	17.10.1981	APPRAISAL	P&A	OIL/GAS
31/2-7	22.04.1982	14.06.1982	APPRAISAL	P&A	OIL/GAS
31/2-9	29.08.1982	01.10.1982	APPRAISAL	P&A	OIL/GAS
31/2-10	02.10.1982	31.10.1982	APPRAISAL	P&A	DRY
31/2-11	17.03.1983	25.05.1983	APPRAISAL	P&A	OIL/GAS
31/2-12	26.05.1983	09.09.1983	APPRAISAL	P&A	OIL/GAS
31/2-13 S	02.01.1984	15.03.1984	APPRAISAL	P&A	OIL/GAS
31/2-14	23.04.1984	21.06.1984	APPRAISAL	P&A	OIL/GAS
31/2-15	10.09.1984	15.11.1984	APPRAISAL	P&A	OIL/GAS
31/2-16 S	27.09.1989	27.12.1989	APPRAISAL	P&A	OIL/GAS
31/2-16 SR	26.06.1991	08.07.1991	APPRAISAL	RE-CLASS TO DEV	OIL/GAS
31/2-17 A	20.01.1992	31.01.1992	APPRAISAL	P&A	OIL/GAS
31/2-17 B	01.02.1992	14.02.1992	APPRAISAL	SUSPENDED	GAS
31/2-17 BR	14.02.1993	24.02.1993	APPRAISAL	P&A	GAS
31/2-17 S	28.12.1991	20.01.1992	APPRAISAL	P&A	OIL/GAS
31/2-18	15.09.1992	07.10.1992	APPRAISAL	P&A	OIL/GAS
31/2-18 A	07.10.1992	17.10.1992	APPRAISAL	P&A	OIL/GAS
31/2-20 S	27.11.2002	08.12.2002	WILDCAT	P&A	OIL/GAS
31/3-1	17.07.1983	13.10.1983	APPRAISAL	P&A	GAS
31/3-2	05.03.1984	30.04.1984	APPRAISAL	P&A	OIL/GAS
31/5-1	05.09.1983	30.09.1983	APPRAISAL	JUNKED	NOT APPLICABLE
31/5-2	05.10.1983	11.11.1983	APPRAISAL	SUSPENDED	OIL/GAS
31/5-2 R	13.06.1984	30.08.1984	APPRAISAL	P&A	OIL/GAS
31/5-3	10.04.1984	09.06.1984	APPRAISAL	P&A	OIL/GAS
31/5-4 A	10.10.1990	13.12.1990	APPRAISAL	SUSPENDED	OIL/GAS
31/5-4 AR	09.07.1991	18.07.1991	APPRAISAL	SUSPENDED	OIL/GAS
31/5-4 AR2	24.08.2003	05.09.2003	APPRAISAL	P&A	OIL/GAS
31/5-4 S	13.09.1990	10.10.1990	APPRAISAL	P&A	OIL/GAS
31/5-5	30.12.1992	11.02.1993	APPRAISAL	SUSPENDED	OIL/GAS



31/5-5 R	18.07.2002	27.07.2002	APPRAISAL	P&A	OIL/GAS
31/6-1	15.07.1983	28.10.1983	WILDCAT	P&A	OIL/GAS
31/6-2	18.10.1983	11.12.1983	APPRAISAL	SUSPENDED	GAS
31/6-2 R	31.07.1984	08.09.1984	APPRAISAL	P&A	GAS
31/6-4	05.03.1984	16.03.1984	APPRAISAL	JUNKED	NOT APPLICABLE
31/6-5	16.03.1984	21.05.1984	APPRAISAL	P&A	OIL/GAS
31/6-6	22.05.1984	29.07.1984	APPRAISAL	P&A	GAS
31/6-7	01.04.1985	13.04.1985	APPRAISAL	JUNKED	NOT APPLICABLE
31/6-8	14.04.1985	25.05.1985	APPRAISAL	SUSPENDED	OIL/GAS
31/6-8 R	22.07.1985	22.09.1985	APPRAISAL	P&A	OIL/GAS

Wellbores - development

Wellbore name	Entered date	Completed date	Purpose	Content
31/2-B-3 H	02.09.1994	20.09.1994	INJECTION	GAS
31/2-D-1 H	01.08.1998	14.08.1998	OBSERVATION	NOT APPLICABLE
31/2-D-1 AH	15.08.1998	08.09.1998	PRODUCTION	OIL
31/2-D-1 BY1H	26.08.2010	14.09.2010	PRODUCTION	OIL
31/2-D-1 BY2H	15.09.2010	27.09.2010	PRODUCTION	OIL
31/2-D-1 BY3H	28.09.2010	08.10.2010	PRODUCTION	OIL
31/2-D-2 H	20.12.1995	19.01.1996	PRODUCTION	OIL
31/2-D-2 AY1H	15.07.2011	05.08.2011	PRODUCTION	OIL
31/2-D-2 AY2H	06.08.2011	13.08.2011	PRODUCTION	OIL
31/2-D-2 AY3H	14.08.2011	22.08.2011	PRODUCTION	OIL
31/2-D-4 Y1H	20.04.2003	06.06.2003	PRODUCTION	OIL
31/2-D-4 Y2H	07.06.2003	26.06.2003	PRODUCTION	OIL
31/2-D-5 H	27.07.1997	09.08.1997	OBSERVATION	OIL
31/2-D-5 AH	10.08.1997	03.09.1997	PRODUCTION	OIL
31/2-D-5 BY1H	08.04.2015	28.04.2015	PRODUCTION	OIL
31/2-D-5 BY2H	29.04.2015	09.05.2015	PRODUCTION	OIL
31/2-D-5 BY3H	10.05.2015	17.05.2015	PRODUCTION	OIL
31/2-D-6 H	26.10.1994	22.11.1994	PRODUCTION	OIL
31/2-D-6 AY1H	17.07.2012	26.02.2013	PRODUCTION	OIL
31/2-D-6 AY2H	27.02.2013	11.03.2013	PRODUCTION	OIL
31/2-D-6 AY3H	12.03.2013	31.03.2013	PRODUCTION	OIL
31/2-D-7 H	05.03.1996	31.03.1996	PRODUCTION	OIL
31/2-D-7 AY1H	06.03.2007	07.04.2007	PRODUCTION	OIL
31/2-D-7 AY2H	08.04.2007	14.04.2007	PRODUCTION	OIL
31/2-D-7 AY3H	15.04.2007	23.04.2007	PRODUCTION	OIL
31/2-D-7 AY5H	30.04.2007	05.05.2007	PRODUCTION	OIL
31/2-D-7 AY6H	06.05.2007	11.05.2007	PRODUCTION	OIL



NPD Factpages

Field

Printed: 22.10.2020 - 08:55

OLJEDIREKTORATET

31/2-D-7 AY7H	12.05.2007	22.05.2007	PRODUCTION	OIL
31/2-D-7 AY4H	24.04.2007	29.04.2007	PRODUCTION	OIL
31/2-D-7 BY1H	06.02.2019	09.03.2019	PRODUCTION	OIL
31/2-D-7 BY2H	10.03.2019	25.03.2019	PRODUCTION	OIL
31/2-D-7 BY3H	26.03.2019	08.04.2019	PRODUCTION	OIL
31/2-D-8 H	14.01.1995	27.01.1995	OBSERVATION	NOT APPLICABLE
31/2-D-8 AH	28.01.1995	26.02.1995	PRODUCTION	OIL
31/2-D-8 BY1H	26.11.2011	21.01.2012	PRODUCTION	OIL
31/2-D-8 BY2H	22.01.2012	05.02.2012	PRODUCTION	OIL
31/2-D-8 BY3H	06.02.2012	16.02.2012	PRODUCTION	OIL
31/2-D-8 BY4H			PRODUCTION	
31/2-D-8 CY1H	21.07.2020	15.08.2020	PRODUCTION	OIL
31/2-D-8 CY2H	16.08.2020	05.09.2020	PRODUCTION	OIL
31/2-D-8 CY3H	06.09.2020	18.09.2020	PRODUCTION	OIL
31/2-D-9	11.10.1995	26.10.1995	OBSERVATION	NOT APPLICABLE
31/2-D-10 H	09.10.1997	28.10.1997	PRODUCTION	OIL
31/2-E-1 H	02.06.1995	11.06.1995	OBSERVATION	NOT APPLICABLE
31/2-E-1 AH	12.06.1995	01.07.1995	PRODUCTION	OIL
31/2-E-1 BY1H	22.11.2007	11.01.2008	PRODUCTION	OIL
31/2-E-1 BY2H	12.01.2008	19.02.2008	PRODUCTION	OIL
31/2-E-1 CY1H	14.10.2018	09.11.2018	PRODUCTION	OIL
31/2-E-1 CY2H	10.11.2018	05.12.2018	PRODUCTION	OIL
31/2-E-1 CY3H	06.12.2018	28.12.2018	PRODUCTION	OIL
31/2-E-3 AY1H	17.12.2019	24.01.2020	PRODUCTION	OIL
31/2-E-3 AY2H	25.01.2020	14.02.2020	PRODUCTION	OIL
31/2-E-3 AY3H			PRODUCTION	
31/2-E-3 AY4H			PRODUCTION	
31/2-E-3 Y1H	06.11.2002	03.02.2003	PRODUCTION	OIL
31/2-E-3 Y2H	03.02.2003	04.03.2003	PRODUCTION	OIL
31/2-E-3 Y3H	05.03.2003	10.04.2003	PRODUCTION	OIL
31/2-E-4 H	23.03.1995	25.04.1995	PRODUCTION	OIL
31/2-E-4 AY1H	16.06.2015	11.07.2015	PRODUCTION	OIL
31/2-E-4 AY2H	12.07.2015	30.07.2015	PRODUCTION	OIL
31/2-E-4 AY3H	31.07.2015	06.08.2015	PRODUCTION	OIL
31/2-E-5 H	29.01.1996	08.02.1996	OBSERVATION	NOT APPLICABLE
31/2-E-5 AH	09.02.1996	22.02.1996	PRODUCTION	OIL
31/2-E-5 BY1H	10.11.2012	01.12.2012	PRODUCTION	OIL
31/2-E-5 BY2H	02.12.2012	16.12.2012	PRODUCTION	OIL
31/2-E-5 BY3H	17.12.2012	01.01.2013	PRODUCTION	OIL
31/2-E-6 H	29.09.1994	23.10.1994	OBSERVATION	NOT APPLICABLE



NPD Factpages

Field

Printed: 22.10.2020 - 08:55

OLJEDIREKTORATET

31/2-E-6 AH	06.01.1997	11.01.1997	OBSERVATION	NOT APPLICABLE
31/2-E-6 BH	12.01.1997	23.01.1997	PRODUCTION	OIL
31/2-E-6 CH	13.08.2002	22.08.2002	OBSERVATION	NOT APPLICABLE
31/2-E-6 DY1H	23.08.2002	23.09.2002	PRODUCTION	OIL
31/2-E-6 DY2H	24.09.2002	25.10.2002	PRODUCTION	OIL
31/2-E-6 EY1H	12.04.2014	11.05.2014	PRODUCTION	OIL
31/2-E-6 EY2H	12.05.2014	26.05.2014	PRODUCTION	OIL
31/2-E-6 EY3H	27.05.2014	10.06.2014	PRODUCTION	OIL
31/2-E-6 EY4H	11.06.2014	23.06.2014	PRODUCTION	OIL
31/2-F-1 H	25.08.1996	07.09.1996	OBSERVATION	NOT APPLICABLE
31/2-F-1 AH	08.09.1996	03.10.1996	PRODUCTION	OIL
31/2-F-1 BY1H	02.09.2009	16.10.2009	PRODUCTION	OIL
31/2-F-1 BY2H	17.10.2009	05.11.2009	PRODUCTION	OIL
31/2-F-1 CY1H	10.12.2014	16.01.2015	PRODUCTION	OIL
31/2-F-1 CY2H	17.01.2015	04.02.2015	PRODUCTION	OIL
31/2-F-1 CY3H	05.02.2015	18.02.2015	PRODUCTION	OIL
31/2-F-4 H	13.02.1997	25.02.1997	OBSERVATION	NOT APPLICABLE
31/2-F-4 AH	26.02.1997	12.03.1997	PRODUCTION	OIL
31/2-F-4 BY1H	11.09.2013	14.11.2013	PRODUCTION	OIL
31/2-F-4 BY2H	15.11.2013	19.12.2013	PRODUCTION	OIL
31/2-F-4 BY3H	20.12.2013	31.12.2013	PRODUCTION	OIL
31/2-F-5 H	27.09.1989	27.12.1989	PRODUCTION	OIL
31/2-F-5 AH	09.04.2004	21.04.2004	OBSERVATION	NOT APPLICABLE
31/2-F-5 BY1H	22.04.2004	14.06.2004	PRODUCTION	OIL
31/2-F-5 BY2H	15.06.2004	25.07.2004	PRODUCTION	OIL
31/2-F-6 H	20.04.1994	12.05.1994	OBSERVATION	NOT APPLICABLE
31/2-F-6 AH	06.05.1995	23.05.1995	PRODUCTION	OIL
31/2-F-6 BY1H	31.07.2008	24.08.2008	PRODUCTION	OIL
31/2-F-6 BY2H	26.08.2008	13.09.2008	PRODUCTION	OIL
31/2-F-6 CY1H	26.10.2017	21.11.2017	PRODUCTION	OIL
31/2-F-6 CY2H	22.11.2017	23.12.2017	PRODUCTION	OIL
31/2-F-6 CY3H	24.12.2017	28.12.2017	PRODUCTION	OIL
31/2-G-1 H	14.10.1996	23.10.1996	OBSERVATION	NOT APPLICABLE
31/2-G-1 AH	24.10.1996	14.11.1996	PRODUCTION	OIL
31/2-G-1 BY1H	04.08.2006	10.03.2007	PRODUCTION	OIL
31/2-G-1 BY2H	11.03.2007	19.04.2007	PRODUCTION	OIL
31/2-G-1 CY1H	11.09.2014	01.10.2014	PRODUCTION	OIL
31/2-G-1 CY2H	02.10.2014	24.10.2014	PRODUCTION	OIL



NPD Factpages

Field

OLJEDIREKTORATET

Printed: 22.10.2020 - 08:55

31/2-G-1 CY3H	25.10.2014	02.11.2014	PRODUCTION	OIL
31/2-G-3 H	15.05.1994	28.06.1994	PRODUCTION	OIL
31/2-G-3 AY1H	06.01.2011	12.02.2011	PRODUCTION	OIL
31/2-G-3 AY2H	13.02.2011	26.02.2011	PRODUCTION	OIL
31/2-G-3 AY3H	27.02.2011	10.03.2011	PRODUCTION	OIL
31/2-G-3 BY1H	29.03.2020	28.04.2020	PRODUCTION	
31/2-G-3 BY2H	29.04.2020	28.05.2020	PRODUCTION	OIL
31/2-G-3 BY3H	29.05.2020	16.06.2020	PRODUCTION	OIL
31/2-G-4 H	19.03.1994	15.04.1994	OBSERVATION	NOT APPLICABLE
31/2-G-4 AH	06.08.1994	27.08.1994	PRODUCTION	OIL
31/2-G-4 BY1H	15.09.2011	08.10.2011	PRODUCTION	OIL
31/2-G-4 BY2H	09.10.2011	18.10.2011	PRODUCTION	OIL
31/2-G-4 CY1H	21.11.2016	22.12.2016	PRODUCTION	OIL
31/2-G-4 CY2H	23.12.2016	16.01.2017	PRODUCTION	OIL
31/2-G-4 CY3H	17.01.2017	12.02.2017	PRODUCTION	OIL
31/2-G-6 H	25.08.1995	29.09.1995	PRODUCTION	OIL
31/2-G-6 AY1H	27.08.2008	23.09.2008	PRODUCTION	OIL
31/2-G-6 AY2H	24.09.2008	05.10.2008	PRODUCTION	OIL
31/2-G-6 BY1H	14.09.2019	06.10.2019	PRODUCTION	OIL
31/2-G-6 BY2H	07.10.2019	22.10.2019	PRODUCTION	OIL
31/2-G-6 BY3H	23.10.2019	10.11.2019	PRODUCTION	OIL
31/2-K-11 AY1H	09.04.2019	19.05.2019	PRODUCTION	OIL
31/2-K-11 AY2H	20.05.2019	13.06.2019	PRODUCTION	OIL
31/2-K-11 AY3H	14.06.2019	30.06.2019	PRODUCTION	OIL
31/2-K-11 Y1H	25.08.2003	24.09.2003	PRODUCTION	OIL
31/2-K-11 Y2H	25.09.2003	11.10.2003	PRODUCTION	OIL
31/2-K-11 Y3H	12.10.2003	26.10.2003	PRODUCTION	OIL
31/2-K-12 H	28.10.1999	10.11.1999	OBSERVATION	NOT APPLICABLE
31/2-K-12 AH	11.11.1999	25.11.1999	PRODUCTION	OIL
31/2-K-12 BY1H	10.05.2011	05.06.2011	PRODUCTION	OIL
31/2-K-12 BY2H	06.06.2011	24.06.2011	PRODUCTION	OIL
31/2-K-12 CY1H	15.09.2016	26.11.2016	PRODUCTION	OIL
31/2-K-12 CY2H	27.11.2016	13.12.2016	PRODUCTION	OIL
31/2-K-12 CY3H	14.12.2016	08.01.2017	PRODUCTION	OIL
31/2-K-13 H	20.06.1999	01.07.1999	OBSERVATION	OIL
31/2-K-13 AH	02.07.1999	17.07.1999	PRODUCTION	OIL
31/2-K-13 BY1H	05.04.2013	27.05.2013	PRODUCTION	OIL
31/2-K-13 BY2H	28.05.2013	17.06.2013	PRODUCTION	OIL
31/2-K-13 BY3H	18.06.2013	03.07.2013	PRODUCTION	OIL
31/2-K-14 H	27.03.2000	09.04.2000	OBSERVATION	NOT APPLICABLE
31/2-K-14 AY1H	11.04.2000	29.04.2000	PRODUCTION	OIL



NPD Factpages

Field

OLJEDIREKTORATET

Printed: 22.10.2020 - 08:55

31/2-K-14 AY2H	30.04.2000	08.05.2000	PRODUCTION	OIL
31/2-K-14 BY1H	24.04.2012	17.05.2012	PRODUCTION	OIL
31/2-K-14 BY2H	18.05.2012	30.05.2012	PRODUCTION	OIL
31/2-K-14 CH	06.07.2017	24.07.2017	PRODUCTION	OIL
31/2-K-21 H	07.05.2001	26.05.2001	OBSERVATION	NOT APPLICABLE
31/2-K-21 AY1H	27.05.2001	14.06.2001	PRODUCTION	OIL
31/2-K-21 AY2H	15.06.2001	27.06.2001	PRODUCTION	OIL
31/2-K-21 BY1H	27.05.2015	19.06.2015	PRODUCTION	OIL
31/2-K-21 BY2H	20.06.2015	01.07.2015	PRODUCTION	OIL
31/2-K-21 BY3H	02.07.2015	12.07.2015	PRODUCTION	OIL
31/2-K-21 BY4H			PRODUCTION	
31/2-K-22 H	19.08.1999	28.08.1999	OBSERVATION	NOT APPLICABLE
31/2-K-22 AH	29.08.1999	15.09.1999	PRODUCTION	OIL
31/2-K-22 BY1H	18.03.2013	28.03.2013	PRODUCTION	OIL
31/2-K-22 BY2H	29.03.2013	08.04.2013	PRODUCTION	OIL
31/2-K-23 H	28.05.1999	17.06.1999	OBSERVATION	NOT APPLICABLE
31/2-K-23 AH	28.07.1999	12.08.1999	PRODUCTION	OIL
31/2-K-23 BY1H	02.09.2013	29.10.2013	PRODUCTION	OIL
31/2-K-23 BY2H	30.10.2013	14.11.2013	PRODUCTION	OIL
31/2-K-24 Y1H	13.09.2004	01.11.2004	PRODUCTION	OIL
31/2-K-24 Y2H	02.11.2004	25.11.2004	PRODUCTION	OIL
31/2-K-24 Y3H	26.11.2004	14.12.2004	PRODUCTION	OIL
31/2-K-24 Y4H	15.12.2004	07.01.2005	PRODUCTION	OIL
31/2-L-11 H	01.10.2000	13.10.2000	OBSERVATION	NOT APPLICABLE
31/2-L-11 AH	14.10.2000	02.11.2000	PRODUCTION	OIL
31/2-L-11 BY1H	12.07.2007	26.08.2007	PRODUCTION	OIL
31/2-L-11 BY2H	27.08.2007	16.09.2007	PRODUCTION	OIL
31/2-L-11 CY1H	13.10.2015	04.11.2015	PRODUCTION	OIL
31/2-L-11 CY2H	05.11.2015	21.11.2015	PRODUCTION	OIL
31/2-L-11 CY3H	22.11.2015	16.12.2015	PRODUCTION	OIL
31/2-L-12 Y1H	23.03.2003	26.04.2003	PRODUCTION	OIL
31/2-L-12 Y2H	27.04.2003	17.05.2003	PRODUCTION	OIL
31/2-L-13 H	12.11.2000	07.12.2000	PRODUCTION	OIL
31/2-L-13 AY1H	17.05.2006	23.06.2006	PRODUCTION	OIL
31/2-L-13 AY2H	24.06.2006	03.07.2006	PRODUCTION	OIL
31/2-L-13 AY3H	22.08.2006	15.09.2006	PRODUCTION	OIL
31/2-L-13 BY1H	04.01.2018	17.02.2018	PRODUCTION	OIL
31/2-L-13 BY2H	18.02.2018	07.03.2018	PRODUCTION	OIL
31/2-L-13 BY3H	08.03.2018	22.03.2018	PRODUCTION	OIL
31/2-L-14 Y1H	31.03.2001	01.05.2001	PRODUCTION	OIL



NPD Factpages

Field

OLJEDIREKTORATET

Printed: 22.10.2020 - 08:55

31/2-L-14 Y2H	02.05.2001	19.05.2001	PRODUCTION	OIL
31/2-L-21 H	03.08.2001	18.08.2001	OBSERVATION	NOT APPLICABLE
31/2-L-21 AY1H	19.08.2001	18.09.2001	PRODUCTION	OIL
31/2-L-21 AY2H	19.09.2001	16.10.2001	PRODUCTION	OIL
31/2-L-21 BH	13.05.2015	22.05.2015	PRODUCTION	OIL
31/2-L-22 H	24.09.2002	07.10.2002	OBSERVATION	NOT APPLICABLE
31/2-L-22 AY1H	09.10.2002	10.11.2002	PRODUCTION	OIL
31/2-L-22 AY2H	11.11.2002	30.11.2002	PRODUCTION	OIL
31/2-L-22 BY1H	23.09.2014	17.11.2014	PRODUCTION	OIL
31/2-L-22 BY2H	18.11.2014	21.12.2014	PRODUCTION	OIL
31/2-L-22 BY3H	22.12.2014	01.02.2015	PRODUCTION	OIL
31/2-L-22 BY4H	02.02.2015	13.02.2015	PRODUCTION	OIL
31/2-L-23 AY1H	06.02.2018	09.03.2018	PRODUCTION	OIL
31/2-L-23 AY2H	10.03.2018	22.03.2018	PRODUCTION	OIL
31/2-L-23 AY3H	23.03.2018	14.04.2018	PRODUCTION	OIL
31/2-L-23 Y1H	18.08.2005	21.09.2005	PRODUCTION	OIL
31/2-L-23 Y2H	22.09.2005	06.10.2005	PRODUCTION	OIL
31/2-L-23 Y3H	07.10.2005	17.10.2005	PRODUCTION	OIL
31/2-L-23 Y4H	18.10.2005	22.10.2005	PRODUCTION	OIL
31/2-L-23 Y5H	23.10.2005	03.11.2005	PRODUCTION	OIL
31/2-L-23 Y6H	04.11.2005	19.11.2005	PRODUCTION	OIL
31/2-L-24 H	25.10.2001	31.10.2001	OBSERVATION	NOT APPLICABLE
31/2-L-24 AY1H	01.11.2001	30.11.2001	PRODUCTION	OIL
31/2-L-24 AY2H	01.12.2001	22.12.2001	PRODUCTION	OIL
31/2-L-24 BY1H	09.04.2013	11.05.2013	PRODUCTION	OIL
31/2-L-24 BY2H	12.05.2013	01.06.2013	PRODUCTION	OIL
31/2-L-24 BY3H	02.06.2013	16.06.2013	PRODUCTION	OIL
31/2-L-24 CH	07.07.2016	26.07.2016	PRODUCTION	OIL
31/2-L-24 DH	21.08.2018	10.09.2018	PRODUCTION	OIL
31/2-L-41	27.01.1998	10.02.1998	OBSERVATION	NOT APPLICABLE
31/2-M-11 H	08.05.2000	06.07.2000	PRODUCTION	OIL
31/2-M-11 AY1H	30.04.2015	18.05.2015	PRODUCTION	OIL
31/2-M-11 AY2H	19.05.2015	04.06.2015	PRODUCTION	OIL
31/2-M-12 H	11.05.2002	08.07.2002	PRODUCTION	OIL
31/2-M-12 AY1H	14.07.2015	17.12.2015	PRODUCTION	OIL
31/2-M-12 AY2H	18.12.2015	11.01.2016	PRODUCTION	OIL
31/2-M-13 AY1H	22.02.2014	26.03.2014	PRODUCTION	OIL
31/2-M-13 AY2H	27.03.2014	22.04.2014	PRODUCTION	OIL
31/2-M-13 AY3H	23.04.2014	02.05.2014	PRODUCTION	OIL
31/2-M-13 BY1H			PRODUCTION	



31/2-M-13 BY2H			PRODUCTION	
31/2-M-13 BY3H			PRODUCTION	
31/2-M-13 Y1H	11.04.2001	02.06.2001	PRODUCTION	OIL
31/2-M-13 Y2H	03.06.2001	25.06.2001	PRODUCTION	OIL
31/2-M-14 H	15.07.2000	30.07.2000	OBSERVATION	NOT APPLICABLE
31/2-M-14 AH	01.08.2000	16.09.2000	PRODUCTION	OIL
31/2-M-14 BY1H	14.01.2010	12.02.2010	PRODUCTION	OIL
31/2-M-14 BY2H	13.02.2010	23.02.2010	PRODUCTION	OIL
31/2-M-14 BY3H	24.02.2010	02.04.2010	PRODUCTION	OIL
31/2-M-14 CY1H	02.05.2017	07.07.2017	PRODUCTION	OIL
31/2-M-14 CY2H	08.07.2017	31.07.2017	PRODUCTION	OIL
31/2-M-14 CY3H	01.08.2017	13.08.2017	PRODUCTION	OIL
31/2-M-21 H	08.07.2001	30.08.2001	PRODUCTION	OIL
31/2-M-22 H	29.01.2001	30.03.2001	PRODUCTION	OIL
31/2-M-22 AY1H	19.04.2018	14.11.2018	PRODUCTION	OIL
31/2-M-22 AY2H	15.11.2018	01.12.2018	PRODUCTION	OIL
31/2-M-22 AY3H	02.12.2018	23.12.2018	PRODUCTION	OIL
31/2-M-23 H	04.06.2000	19.06.2000	OBSERVATION	NOT APPLICABLE
31/2-M-23 AH	20.06.2000	14.07.2000	PRODUCTION	OIL
31/2-M-23 BY1H	26.10.2013	01.12.2013	PRODUCTION	OIL
31/2-M-23 BY2H	02.12.2013	05.01.2014	PRODUCTION	OIL
31/2-M-23 CY1H	11.06.2019	02.07.2019	PRODUCTION	OIL
31/2-M-23 CY2H	03.07.2019	25.07.2019	PRODUCTION	OIL
31/2-M-23 CY3H	26.07.2019	12.08.2019	PRODUCTION	OIL
31/2-M-24 AH	22.07.2009	23.07.2009	OBSERVATION	NOT APPLICABLE
31/2-M-24 Y1H	31.07.2006	21.07.2009	PRODUCTION	OIL
31/2-M-24 Y2H	24.07.2009	04.08.2009	PRODUCTION	OIL
31/2-M-24 Y3H	05.08.2009	21.08.2009	PRODUCTION	OIL
31/2-M-24 Y4H			PRODUCTION	
31/2-M-41	19.03.1997	04.04.1997	OBSERVATION	NOT APPLICABLE
31/2-M-42	15.03.1998	09.04.1998	OBSERVATION	NOT APPLICABLE
31/2-N-11 H	12.07.2005	24.08.2005	OBSERVATION	OIL/GAS
31/2-N-11 AH	27.12.2005	03.02.2006	OBSERVATION	OIL/GAS
31/2-N-11 BY1H	04.02.2006	15.03.2006	PRODUCTION	OIL
31/2-N-11 BY2H	16.03.2006	06.04.2006	PRODUCTION	OIL
31/2-N-11 BY3H	07.04.2006	24.04.2006	PRODUCTION	OIL
31/2-N-11 BY4H	25.04.2006	06.05.2006	PRODUCTION	OIL
31/2-N-11 BY5H			PRODUCTION	
31/2-N-11 BY6H			PRODUCTION	
31/2-N-12 H	14.03.2001	30.04.2001	PRODUCTION	OIL



NPD Factpages

Field

OLJEDIREKTORATET

Printed: 22.10.2020 - 08:55

31/2-N-13 H	28.11.2000	07.01.2001	PRODUCTION	OIL
31/2-N-13 AY1H	10.12.2011	05.01.2012	PRODUCTION	OIL
31/2-N-13 AY2H	06.01.2012	30.01.2012	PRODUCTION	OIL
31/2-N-13 BH	01.09.2017	19.09.2017	PRODUCTION	OIL
31/2-N-14 H	19.11.1999	05.12.1999	OBSERVATION	NOT APPLICABLE
31/2-N-14 AH	07.12.1999	27.12.1999	PRODUCTION	OIL
31/2-N-14 BY1H	07.09.2013	17.10.2013	PRODUCTION	OIL
31/2-N-14 BY2H	18.10.2013	03.11.2013	PRODUCTION	OIL
31/2-N-14 BY3H	03.11.2013	11.11.2013	PRODUCTION	OIL
31/2-N-14 CY1H	15.07.2020	07.08.2020	PRODUCTION	OIL
31/2-N-14 CY2H	08.08.2020	03.09.2020	PRODUCTION	
31/2-N-14 CY3H	04.09.2020	24.09.2020	PRODUCTION	OIL
31/2-N-21 AY1H	15.06.2014	07.07.2014	OBSERVATION	OIL
31/2-N-21 AY2H	08.07.2014	14.07.2014	PRODUCTION	OIL
31/2-N-21 AY3H	15.07.2014	29.07.2014	PRODUCTION	OIL
31/2-N-21 AY4H	30.07.2014	16.08.2014	PRODUCTION	OIL
31/2-N-21 AY5H	17.08.2014	21.08.2014	INJECTION	GAS
31/2-N-21 Y1H	30.03.2002	13.05.2002	PRODUCTION	OIL
31/2-N-21 Y2H	14.05.2002	15.06.2002	PRODUCTION	OIL
31/2-N-22 AY1H	19.06.2016	12.07.2016	PRODUCTION	OIL
31/2-N-22 AY2H	12.07.2016	15.08.2016	PRODUCTION	OIL
31/2-N-22 AY3H	16.08.2016	25.08.2016	PRODUCTION	OIL
31/2-N-22 BH	28.09.2018	19.10.2018	PRODUCTION	NOT APPLICABLE
31/2-N-22 CY1H	01.03.2020	13.04.2020	PRODUCTION	OIL
31/2-N-22 CY2H	14.04.2020	18.05.2020	PRODUCTION	OIL
31/2-N-22 CY3H	19.05.2020	15.06.2020	PRODUCTION	OIL
31/2-N-22 Y1H	20.10.2006	07.01.2007	PRODUCTION	OIL
31/2-N-22 Y2H	08.01.2007	18.01.2007	PRODUCTION	OIL
31/2-N-22 Y3H	19.01.2007	19.02.2007	PRODUCTION	OIL
31/2-N-23 H	14.09.2001	02.10.2001	OBSERVATION	NOT APPLICABLE
31/2-N-23 AY2H	06.11.2001	20.11.2001	PRODUCTION	OIL
31/2-N-23 AY1H	03.10.2001	05.11.2001	PRODUCTION	OIL
31/2-N-23 BY1H	07.03.2016	15.04.2016	PRODUCTION	OIL
31/2-N-23 BY2H	16.04.2016	04.05.2016	PRODUCTION	OIL
31/2-N-23 BY3H	05.05.2016	18.05.2016	PRODUCTION	OIL
31/2-N-24 AY1H	11.06.2012	31.07.2012	PRODUCTION	OIL
31/2-N-24 AY2H	01.08.2012	16.08.2012	PRODUCTION	OIL
31/2-N-24 AY3H	17.08.2012	25.08.2012	PRODUCTION	OIL
31/2-N-24 BY1H	24.07.2018	17.08.2018	PRODUCTION	OIL
31/2-N-24 BY2H	18.08.2018	09.09.2018	PRODUCTION	OIL
31/2-N-24 Y4H	18.01.2004	11.02.2004	PRODUCTION	OIL



NPD Factpages

Field

Printed: 22.10.2020 - 08:55

OLJEDIREKTORATET

31/2-N-24 Y5H	12.02.2004	04.03.2004	PRODUCTION	OIL
31/2-N-24 Y1H	04.11.2003	15.12.2003	PRODUCTION	OIL
31/2-N-24 Y2H	16.12.2003	08.01.2004	PRODUCTION	OIL
31/2-N-24 Y3H	09.01.2004	17.01.2004	PRODUCTION	OIL
31/2-O-11 H	15.10.1999	08.11.1999	PRODUCTION	OIL
31/2-O-11 AY1H	03.05.2008	11.05.2008	PRODUCTION	OIL
31/2-O-11 AY2H	12.05.2008	25.05.2008	PRODUCTION	OIL
31/2-O-12 H	13.09.2001	29.09.2001	OBSERVATION	NOT APPLICABLE
31/2-O-12 AH	03.10.2001	08.11.2001	PRODUCTION	OIL
31/2-O-12 BH	11.08.2016	24.08.2016	PRODUCTION	OIL
31/2-O-13 H	15.01.2000	28.01.2000	OBSERVATION	NOT APPLICABLE
31/2-O-13 AH	29.01.2000	14.02.2000	PRODUCTION	OIL
31/2-O-13 BY1H	05.01.2006	01.03.2006	PRODUCTION	OIL
31/2-O-13 BY2H	02.03.2006	25.03.2006	PRODUCTION	OIL
31/2-O-13 CY1H	30.05.2016	26.06.2016	PRODUCTION	OIL
31/2-O-13 CY2H	27.06.2016	11.07.2016	PRODUCTION	OIL
31/2-O-13 CY3H	12.07.2016	22.07.2016	PRODUCTION	OIL
31/2-O-14 Y1H	18.05.2004	22.06.2004	PRODUCTION	OIL
31/2-O-14 Y2H	23.06.2004	17.07.2004	PRODUCTION	OIL
31/2-O-14 Y3H	18.07.2004	02.08.2004	PRODUCTION	OIL
31/2-O-14 Y4H	03.08.2004	04.09.2004	PRODUCTION	OIL
31/2-O-21 AY1H	22.09.2018	14.10.2018	PRODUCTION	OIL
31/2-O-21 AY2H	15.10.2018	01.11.2018	PRODUCTION	OIL
31/2-O-21 AY3H	02.11.2018	15.11.2018	PRODUCTION	OIL
31/2-O-21 Y1H	26.02.2010	05.04.2010	PRODUCTION	OIL
31/2-O-21 Y2H	06.04.2010	20.04.2010	PRODUCTION	OIL
31/2-O-22 Y1H	03.05.2013	30.05.2013	PRODUCTION	OIL
31/2-O-22 Y2H	31.05.2013	05.06.2013	PRODUCTION	OIL
31/2-O-22 Y3H	06.06.2013	25.06.2013	PRODUCTION	OIL
31/2-O-22 Y4H	26.06.2013	10.07.2013	PRODUCTION	OIL
31/2-O-22 Y5H	11.07.2013	14.07.2013	PRODUCTION	OIL
31/2-O-23 Y2H	20.11.2010	03.12.2010	PRODUCTION	OIL
31/2-O-23 Y1H	14.10.2010	19.11.2010	PRODUCTION	OIL
31/2-O-25 AY1H	01.08.2018	10.08.2018	PRODUCTION	OIL
31/2-O-25 AY2H	11.08.2018	22.08.2018	PRODUCTION	OIL
31/2-O-25 Y1H	22.04.2012	21.06.2012	PRODUCTION	OIL
31/2-O-25 Y2H	22.06.2012	13.07.2012	PRODUCTION	OIL
31/2-O-25 Y3H			PRODUCTION	
31/2-O-26 Y1H	22.12.2009	24.01.2010	PRODUCTION	OIL
31/2-O-26 Y2H	25.01.2010	24.02.2010	PRODUCTION	OIL
31/2-O-41	04.04.2000	04.05.2000	OBSERVATION	NOT APPLICABLE



NPD Factpages

Field

Printed: 22.10.2020 - 08:55

OLJEDIREKTORATET

31/2-P-11 AY1H	06.11.2011	30.12.2011	PRODUCTION	OIL
31/2-P-11 AY2H	31.12.2011	16.01.2012	PRODUCTION	OIL
31/2-P-11 BH	05.08.2016	20.08.2016	PRODUCTION	OIL
31/2-P-11 Y1H	11.01.2002	26.02.2002	PRODUCTION	OIL
31/2-P-11 Y2H	27.02.2002	23.03.2002	PRODUCTION	OIL
31/2-P-12 H	15.05.1999	13.06.1999	PRODUCTION	OIL
31/2-P-13 H	21.02.1998	10.03.1998	OBSERVATION	NOT APPLICABLE
31/2-P-13 AH	29.03.1999	23.04.1999	PRODUCTION	OIL
31/2-P-13 BY1H	04.04.2010	02.08.2010	PRODUCTION	OIL
31/2-P-13 BY2H	03.08.2010	17.08.2010	PRODUCTION	OIL
31/2-P-13 CH	12.05.2018	23.05.2018	PRODUCTION	OIL
31/2-P-14 H	16.04.1998	27.04.1998	OBSERVATION	NOT APPLICABLE
31/2-P-14 AH	28.04.1998	11.06.1998	PRODUCTION	OIL
31/2-P-14 BY4H	26.12.2007	12.01.2008	PRODUCTION	OIL
31/2-P-14 BY1H	16.10.2007	23.11.2007	PRODUCTION	OIL
31/2-P-14 BY2H	24.11.2007	08.12.2007	PRODUCTION	OIL
31/2-P-14 BY3H	09.12.2007	25.12.2007	PRODUCTION	OIL
31/2-P-14 CH	14.04.2017	05.05.2017	PRODUCTION	OIL
31/2-P-21 H	09.02.2002	27.02.2002	OBSERVATION	NOT APPLICABLE
31/2-P-21 AY1H	28.02.2002	16.04.2002	PRODUCTION	OIL
31/2-P-21 AY2H	17.04.2002	23.05.2002	PRODUCTION	OIL
31/2-P-21 BY3H	08.06.2011	22.06.2011	PRODUCTION	OIL
31/2-P-21 BY1H	28.04.2011	26.05.2011	PRODUCTION	OIL
31/2-P-21 BY2H	27.05.2011	07.06.2011	PRODUCTION	OIL
31/2-P-21 CY1H	26.01.2018	15.03.2018	PRODUCTION	OIL
31/2-P-21 CY2H	16.03.2018	29.03.2018	PRODUCTION	OIL
31/2-P-21 CY3H	30.03.2018	01.05.2018	PRODUCTION	OIL
31/2-P-22 H	22.06.2002	04.07.2002	OBSERVATION	NOT APPLICABLE
31/2-P-22 AY1H	05.07.2002	29.08.2002	PRODUCTION	OIL
31/2-P-22 AY2H	30.08.2002	22.09.2002	PRODUCTION	OIL
31/2-P-22 BY1H	09.08.2015	30.08.2015	PRODUCTION	OIL
31/2-P-22 BY2H	31.08.2015	11.09.2015	PRODUCTION	OIL
31/2-P-22 BY3H	12.09.2015	19.09.2015	PRODUCTION	OIL
31/2-P-23 AY1H	22.01.2017	21.02.2017	PRODUCTION	OIL
31/2-P-23 AY2H	22.02.2017	11.03.2017	PRODUCTION	OIL
31/2-P-23 AY3H	12.03.2017	31.03.2017	PRODUCTION	OIL
31/2-P-23 Y1H	06.02.2003	31.03.2003	PRODUCTION	OIL
31/2-P-23 Y2H	01.04.2003	23.04.2003	PRODUCTION	OIL
31/2-P-23 Y3H	24.04.2003	08.05.2003	PRODUCTION	OIL
31/2-P-24 AH	10.09.2012	01.11.2012	OBSERVATION	OIL



NPD Factpages

Field

Printed: 22.10.2020 - 08:55

OLJEDIREKTORATET

31/2-P-24 BY1H	05.11.2012	06.01.2013	PRODUCTION	OIL
31/2-P-24 BY2H	07.01.2013	07.02.2013	PRODUCTION	OIL
31/2-P-24 BY3H	08.02.2013	04.03.2013	PRODUCTION	OIL
31/2-P-24 CY1H	26.07.2019	19.08.2019	PRODUCTION	OIL
31/2-P-24 CY2H	20.08.2019	04.09.2019	PRODUCTION	OIL
31/2-P-24 CY3H	25.12.2019	07.01.2020	PRODUCTION	OIL
31/2-P-24 Y1H	25.01.2005	01.05.2005	PRODUCTION	OIL
31/2-P-24 Y2H	02.05.2005	04.06.2005	PRODUCTION	OIL
31/2-P-24 Y3H	05.06.2005	27.06.2005	PRODUCTION	OIL
31/2-P-24 Y4H	28.06.2005	23.07.2005	PRODUCTION	OIL
31/2-P-41	30.10.1997	14.11.1997	OBSERVATION	NOT APPLICABLE
31/2-Q-11 H	25.06.1999	06.07.1999	OBSERVATION	NOT APPLICABLE
31/2-Q-11 AH	07.07.1999	02.08.1999	PRODUCTION	OIL
31/2-Q-11 BY1H	27.06.2003	27.07.2003	PRODUCTION	OIL
31/2-Q-11 BY2H	28.07.2003	07.08.2003	PRODUCTION	OIL
31/2-Q-11 BY3H	08.08.2003	17.08.2003	PRODUCTION	OIL
31/2-Q-11 CY1H	17.08.2016	08.09.2016	PRODUCTION	OIL
31/2-Q-11 CY2H	09.09.2016	13.10.2016	PRODUCTION	OIL
31/2-Q-11 CY3H	14.10.2016	22.10.2016	PRODUCTION	OIL
31/2-Q-12 H	23.12.1999	20.01.2000	OBSERVATION	NOT APPLICABLE
31/2-Q-12 AH	21.01.2000	18.02.2000	PRODUCTION	OIL
31/2-Q-12 BH	08.08.2011	25.08.2011	PRODUCTION	OIL
31/2-Q-13 H	05.03.1999	24.03.1999	OBSERVATION	NOT APPLICABLE
31/2-Q-13 AH	06.08.1999	23.08.1999	PRODUCTION	OIL
31/2-Q-13 BY1H	04.11.2014	21.12.2014	PRODUCTION	OIL
31/2-Q-13 BY2H	22.12.2014	03.01.2015	PRODUCTION	OIL
31/2-Q-13 BY3H	03.01.2015	02.02.2015	PRODUCTION	OIL
31/2-Q-13 BY4H	03.02.2015	13.02.2015	PRODUCTION	OIL
31/2-Q-14 H	07.09.1999	02.10.1999	PRODUCTION	OIL
31/2-Q-14 AY1H	03.03.2008	01.04.2008	PRODUCTION	OIL
31/2-Q-14 AY2H	02.04.2008	14.04.2008	PRODUCTION	OIL
31/2-Q-14 BY1H	17.10.2017	07.11.2017	PRODUCTION	OIL
31/2-Q-14 BY2H	08.11.2017	30.11.2017	PRODUCTION	OIL
31/2-Q-14 BY3H	01.12.2017	14.12.2017	PRODUCTION	OIL
31/2-S-11 H	06.08.2002	25.10.2002	PRODUCTION	OIL
31/2-S-11 AY1H	20.01.2016	14.03.2016	PRODUCTION	OIL
31/2-S-11 AY2H	15.03.2016	22.04.2016	PRODUCTION	OIL
31/2-S-11 AY3H	23.04.2016	09.05.2016	PRODUCTION	OIL
31/2-S-12 H	19.11.2001	05.01.2002	PRODUCTION	OIL
31/2-S-13 H	28.11.1998	16.12.1998	OBSERVATION	NOT APPLICABLE



NPD Factpages

Field

OLJEDIREKTORATET

Printed: 22.10.2020 - 08:55

31/2-S-13 AH	18.12.1998	19.01.1999	PRODUCTION	OIL
31/2-S-14 H	12.07.1998	27.07.1998	OBSERVATION	NOT APPLICABLE
31/2-S-14 AH	29.07.1998	17.10.1998	PRODUCTION	OIL
31/2-S-14 BY1H	31.03.2011	21.04.2011	PRODUCTION	OIL
31/2-S-14 BY2H	22.04.2011	03.05.2011	PRODUCTION	OIL
31/2-S-14 CY1H	05.06.2018	22.06.2018	PRODUCTION	OIL
31/2-S-14 CY2H	23.06.2018	06.07.2018	PRODUCTION	OIL
31/2-S-31 H	23.02.2000	15.03.2000	INJECTION	WATER
31/2-W-11 H	06.10.2019	15.09.2020	PRODUCTION	GAS
31/2-W-12 H	02.10.2019	26.08.2020	PRODUCTION	GAS
31/2-W-13 H	09.10.2019	13.08.2020	PRODUCTION	GAS
31/2-W-14 H	04.10.2019	01.08.2020	PRODUCTION	GAS
31/2-W-21 H	19.09.2019	11.10.2020	PRODUCTION	GAS
31/2-W-22 H	25.09.2019	03.10.2020	PRODUCTION	GAS
31/2-W-23 H	22.09.2019	24.09.2020	PRODUCTION	GAS
31/2-W-24 H	27.09.2019		PRODUCTION	
31/2-X-11 H	14.01.2001	04.02.2001	OBSERVATION	NOT APPLICABLE
31/2-X-11 AH	05.02.2001	06.03.2001	PRODUCTION	OIL
31/2-X-11 BY1H	29.07.2011	21.08.2011	PRODUCTION	OIL
31/2-X-11 BY2H	22.08.2011	31.08.2011	PRODUCTION	OIL
31/2-X-11 CH	08.06.2018	22.06.2018	PRODUCTION	OIL
31/2-X-12 H	17.08.2002	17.09.2002	PRODUCTION	OIL
31/2-X-12 AH	25.08.2007	12.09.2007	PRODUCTION	OIL
31/2-X-13 AY1H	15.03.2014	12.04.2014	PRODUCTION	OIL
31/2-X-13 AY2H	13.04.2014	02.05.2014	PRODUCTION	OIL
31/2-X-13 AY3H	03.05.2014	21.05.2014	PRODUCTION	OIL
31/2-X-13 AY4H	22.05.2014	28.05.2014	PRODUCTION	OIL
31/2-X-13 BY1H	06.07.2018	22.07.2018	PRODUCTION	OIL
31/2-X-13 BY2H	23.07.2018	31.07.2018	PRODUCTION	OIL
31/2-X-13 CY1H	03.03.2020	18.04.2020	PRODUCTION	OIL
31/2-X-13 CY2H	19.04.2020	12.05.2020	PRODUCTION	OIL
31/2-X-13 CY3H	10.06.2020	28.06.2020	PRODUCTION	OIL
31/2-X-13 CY4H	29.06.2020	13.07.2020	PRODUCTION	OIL
31/2-X-13 Y1H	20.03.2002	20.05.2002	PRODUCTION	OIL
31/2-X-13 Y2H	21.05.2002	05.06.2002	PRODUCTION	OIL
31/2-X-13 Y3H	06.06.2002	20.06.2002	PRODUCTION	OIL
31/2-X-14 H	11.08.2001	25.08.2001	OBSERVATION	NOT APPLICABLE
31/2-X-14 AY1H	15.09.2001	16.11.2001	PRODUCTION	OIL
31/2-X-14 AY2H	17.11.2001	29.12.2001	PRODUCTION	OIL
31/2-X-14 BY1H	01.06.2015	23.06.2015	PRODUCTION	OIL
31/2-X-14 BY2H	24.06.2015	04.07.2015	PRODUCTION	OIL



NPD Factpages

Field

Printed: 22.10.2020 - 08:55

OLJEDIREKTORATET

31/2-X-14 BY3H	05.07.2015	13.07.2015	PRODUCTION	OIL
31/2-X-14 CH	18.05.2018	27.05.2018	PRODUCTION	OIL
31/2-X-21 H	28.06.2002	11.08.2002	PRODUCTION	OIL
31/2-X-21 AY1H	01.06.2013	11.07.2013	PRODUCTION	OIL
31/2-X-21 AY2H	12.07.2013	24.07.2013	PRODUCTION	OIL
31/2-X-21 BY1H	27.07.2017	12.08.2017	PRODUCTION	OIL
31/2-X-21 BY2H	13.08.2017	23.08.2017	PRODUCTION	OIL
31/2-X-22 H	04.07.2001	04.08.2001	PRODUCTION	OIL
31/2-X-22 AY1H	27.04.2009	12.06.2009	PRODUCTION	OIL
31/2-X-22 AY2H	13.06.2009	07.07.2009	PRODUCTION	OIL
31/2-X-22 BH	10.09.2017	24.09.2017	PRODUCTION	OIL
31/2-X-23 Y1H	13.02.2006	02.05.2006	PRODUCTION	OIL
31/2-X-23 Y2H	03.05.2006	21.05.2006	PRODUCTION	OIL
31/2-X-23 Y3H	22.05.2006	30.05.2006	PRODUCTION	OIL
31/2-X-23 Y4H			PRODUCTION	
31/2-X-24 H	06.01.2001	17.01.2001	OBSERVATION	NOT APPLICABLE
31/2-X-24 AH	18.01.2001	29.01.2001	PRODUCTION	OIL
31/2-Y-11 H	05.04.2000	17.04.2000	OBSERVATION	NOT APPLICABLE
31/2-Y-11 AH	18.04.2000	06.05.2000	PRODUCTION	OIL
31/2-Y-11 BY1H	20.08.2008	06.11.2008	PRODUCTION	OIL
31/2-Y-11 BY2H	07.11.2008	27.11.2008	PRODUCTION	OIL
31/2-Y-12 AH	05.06.2016	22.06.2016	PRODUCTION	OIL
31/2-Y-12 BY1H	22.12.2018	18.02.2019	PRODUCTION	OIL
31/2-Y-12 BY2H	19.02.2019	16.03.2019	PRODUCTION	OIL
31/2-Y-12 BY3H	17.03.2019	05.04.2019	PRODUCTION	OIL
31/2-Y-12 Y1H	21.04.2008	28.05.2008	PRODUCTION	OIL
31/2-Y-12 Y2H	29.05.2008	19.06.2008	PRODUCTION	OIL
31/2-Y-13 H	06.10.2000	19.10.2000	OBSERVATION	NOT APPLICABLE
31/2-Y-13 AH	20.10.2000	09.11.2000	PRODUCTION	OIL
31/2-Y-13 BY1H	11.02.2009	10.03.2009	PRODUCTION	OIL
31/2-Y-13 BY2H	11.03.2009	26.03.2009	PRODUCTION	OIL
31/2-Y-13 CY1H	24.03.2015		PRODUCTION	NOT APPLICABLE
31/2-Y-13 CY2H			PRODUCTION	
31/2-Y-13 CY3H			PRODUCTION	
31/2-Y-14 H	27.05.2001	03.06.2001	OBSERVATION	NOT APPLICABLE
31/2-Y-14 AY1H	05.06.2001	03.07.2001	PRODUCTION	OIL
31/2-Y-14 AY2H	04.07.2001	25.07.2001	PRODUCTION	OIL
31/2-Y-14 BY1H	09.06.2014	30.07.2014	PRODUCTION	OIL
31/2-Y-14 BY2H	31.07.2014	27.08.2014	PRODUCTION	OIL
31/2-Y-14 BY3H	28.08.2014	21.09.2014	PRODUCTION	OIL



31/2-Y-14 CY1H			PRODUCTION	
31/2-Y-14 CY2H			PRODUCTION	
31/2-Y-14 CY3H			PRODUCTION	
31/2-Y-21 AY1H	18.01.2017	02.03.2017	PRODUCTION	OIL
31/2-Y-21 AY2H	02.03.2017	21.03.2017	PRODUCTION	OIL
31/2-Y-21 AY3H	22.03.2017	10.04.2017	PRODUCTION	OIL
31/2-Y-21 Y4H	02.02.2004	12.02.2004	PRODUCTION	OIL
31/2-Y-21 Y1H	09.11.2003	25.12.2003	PRODUCTION	OIL
31/2-Y-21 Y2H	26.12.2003	16.01.2004	PRODUCTION	OIL
31/2-Y-21 Y3H	17.01.2004	01.02.2004	PRODUCTION	OIL
31/2-Y-22 AY1H	21.09.2016	05.11.2016	PRODUCTION	OIL
31/2-Y-22 AY2H	06.11.2016	22.11.2016	PRODUCTION	OIL
31/2-Y-22 AY3H	23.11.2016	18.12.2016	PRODUCTION	OIL
31/2-Y-22 AY4H	19.12.2016	05.01.2017	PRODUCTION	OIL
31/2-Y-22 Y1H	08.11.2000	15.12.2000	PRODUCTION	OIL
31/2-Y-22 Y2H	16.12.2000	10.01.2001	PRODUCTION	OIL
31/2-Y-23 H	14.09.2000	20.09.2000	OBSERVATION	NOT APPLICABLE
31/2-Y-23 AH	21.09.2000	30.10.2000	PRODUCTION	OIL
31/2-Y-23 BY1H	01.05.2010	22.05.2010	PRODUCTION	NOT APPLICABLE
31/2-Y-23 BY2H			PRODUCTION	
31/2-Y-23 CY1H	25.05.2010	21.06.2010	PRODUCTION	OIL
31/2-Y-23 CY2H	22.06.2010	09.07.2010	PRODUCTION	OIL
31/2-Y-24 H	21.02.2000	09.03.2000	OBSERVATION	NOT APPLICABLE
31/2-Y-24 AH	10.03.2000	30.03.2000	PRODUCTION	OIL
31/2-Y-24 BY1H	17.02.2012	22.04.2012	PRODUCTION	OIL
31/2-Y-24 BY2H	23.04.2012	29.05.2012	PRODUCTION	OIL
31/2-Y-24 CY1H	07.06.2018	28.06.2018	PRODUCTION	OIL
31/2-Y-24 CY2H	29.06.2018	12.07.2018	PRODUCTION	OIL
31/3-Q-21 H	27.04.2001	20.05.2001	OBSERVATION	NOT APPLICABLE
31/3-Q-21 AY1H	24.03.2004	15.04.2004	PRODUCTION	OIL
31/3-Q-21 AY2H	16.04.2004	03.05.2004	PRODUCTION	OIL
31/3-Q-21 BY1H	24.08.2007	24.07.2008	PRODUCTION	OIL
31/3-Q-21 BY2H	25.07.2008	17.08.2008	PRODUCTION	OIL
31/3-S-21 H	05.06.2005	18.07.2005	OBSERVATION	NOT APPLICABLE
31/3-S-21 AH	04.09.2005	03.11.2005	OBSERVATION	NOT APPLICABLE
31/3-S-21 BY1H	06.11.2005	27.11.2005	PRODUCTION	OIL
31/3-S-21 BY2H	28.11.2005	30.12.2005	PRODUCTION	OIL
31/3-S-21 BY3H	31.12.2005	28.01.2006	PRODUCTION	OIL



NPD Factpages

Field

OLJEDIREKTORATET

Printed: 22.10.2020 - 08:55

31/3-S-22 H	09.11.2002	13.12.2002	OBSERVATION	NOT APPLICABLE
31/3-S-22 AH	15.12.2002	21.01.2003	PRODUCTION	OIL
31/3-S-23 H	22.07.2000	18.08.2000	PRODUCTION	OIL
31/3-S-23 AY1H	29.10.2008	27.12.2008	PRODUCTION	OIL
31/3-S-23 AY2H	28.12.2008	24.01.2009	PRODUCTION	OIL
31/3-S-23 BY1H	22.12.2015	01.04.2016	PRODUCTION	OIL
31/3-S-23 BY2H	02.04.2016	23.04.2016	PRODUCTION	OIL
31/3-S-23 BY3H			PRODUCTION	NOT APPLICABLE
31/3-S-24 AY1H	29.10.2017	26.11.2017	PRODUCTION	OIL
31/3-S-24 AY2H	27.11.2017	17.12.2017	PRODUCTION	OIL
31/3-S-24 AY3H	18.12.2017	05.01.2018	PRODUCTION	OIL
31/3-S-24 Y1H	14.07.2006	16.11.2006	PRODUCTION	OIL
31/3-S-24 Y2H	17.11.2006	30.12.2006	PRODUCTION	OIL
31/3-S-24 Y3H	31.12.2006	29.01.2007	PRODUCTION	OIL
31/3-S-41	16.06.1998	02.07.1998	OBSERVATION	NOT APPLICABLE
31/5-B-2 H	12.03.1990	22.03.1990	PRODUCTION	GAS
31/5-B-3 H	29.03.1990	07.04.1990	PRODUCTION	GAS
31/5-B-4 H	29.01.1990	25.02.1990	PRODUCTION	GAS
31/5-B-5 H	28.02.1990	09.03.1990	PRODUCTION	GAS
31/5-B-6 H	04.12.1989	19.12.1989	PRODUCTION	GAS
31/5-H-1 H	14.04.1996	30.04.1996	OBSERVATION	NOT APPLICABLE
31/5-H-1 AH	01.05.1996	26.05.1996	PRODUCTION	OIL
31/5-H-1 BY1H	21.05.2019	12.06.2019	PRODUCTION	OIL
31/5-H-1 BY2H	13.06.2019	30.06.2019	PRODUCTION	OIL
31/5-H-1 BY3H	01.07.2019	14.07.2019	PRODUCTION	OIL
31/5-H-1 BY4H	15.07.2019	26.07.2019	PRODUCTION	OIL
31/5-H-2 H	26.11.1996	23.12.1996	PRODUCTION	OIL
31/5-H-2 AH	06.10.2005	16.10.2005	OBSERVATION	NOT APPLICABLE
31/5-H-2 BY1H	17.10.2005	28.10.2005	PRODUCTION	OIL
31/5-H-2 BY2H	29.10.2005	04.11.2005	PRODUCTION	OIL
31/5-H-2 BY3H	05.11.2005	17.11.2005	PRODUCTION	OIL
31/5-H-2 CY1H	15.10.2013	09.02.2014	PRODUCTION	OIL
31/5-H-2 CY2H	10.02.2014	18.02.2014	PRODUCTION	OIL
31/5-H-2 CY3H	19.02.2014	28.02.2014	PRODUCTION	OIL
31/5-H-3 H	07.04.1997	22.04.1997	OBSERVATION	NOT APPLICABLE
31/5-H-3 AH	23.04.1997	02.06.1997	PRODUCTION	OIL
31/5-H-3 BH	03.06.1997	22.06.1997	PRODUCTION	OIL
31/5-H-3 CY1H	08.11.2009	14.12.2009	PRODUCTION	OIL
31/5-H-3 CY2H	15.12.2009	03.01.2010	PRODUCTION	OIL



NPD Factpages

Field

OLJEDIREKTORATET

Printed: 22.10.2020 - 08:55

31/5-H-4 H	28.06.1996	30.07.1996	PRODUCTION	OIL
31/5-H-4 AY1H	30.03.2017	18.04.2017	PRODUCTION	OIL
31/5-H-4 AY2H	19.04.2017	11.05.2017	PRODUCTION	OIL
31/5-H-4 AY3H	12.05.2017	28.05.2017	PRODUCTION	OIL
31/5-H-4 AY4H	29.05.2017	07.06.2017	PRODUCTION	OIL
31/5-H-5 H	03.06.1995	25.06.1995	OBSERVATION	NOT APPLICABLE
31/5-H-5 AH	19.11.1995	11.12.1995	PRODUCTION	OIL
31/5-H-5 BY1H	28.07.2012	18.09.2012	PRODUCTION	OIL
31/5-H-5 BY2H	19.09.2012	29.09.2012	PRODUCTION	OIL
31/5-H-6 H	27.06.1995	23.07.1995	OBSERVATION	NOT APPLICABLE
31/5-H-6 AH	24.07.1995	21.08.1995	PRODUCTION	OIL
31/5-H-6 BY1H	25.04.2009	30.05.2009	PRODUCTION	OIL
31/5-H-6 BY2H	31.05.2009	18.06.2009	PRODUCTION	OIL
31/5-I-11 H	14.10.1998	31.10.1998	OBSERVATION	NOT APPLICABLE
31/5-I-11 AH	01.11.1998	02.12.1998	PRODUCTION	OIL
31/5-I-11 BY1H	10.11.2019	23.12.2019	PRODUCTION	OIL
31/5-I-11 BY2H	24.12.2019	17.01.2020	PRODUCTION	
31/5-I-11 BY3H	18.01.2020	01.02.2020	PRODUCTION	OIL
31/5-I-12 AY1H	26.02.2012	24.03.2012	PRODUCTION	OIL
31/5-I-12 AY2H	25.03.2012	16.04.2012	PRODUCTION	OIL
31/5-I-12 BY1H			PRODUCTION	
31/5-I-12 BY2H			PRODUCTION	
31/5-I-12 BY3H			PRODUCTION	
31/5-I-12 Y1H	02.01.2002	05.02.2002	PRODUCTION	OIL
31/5-I-12 Y2H	06.02.2002	18.02.2002	PRODUCTION	OIL
31/5-I-13 AY1H	08.07.2014	19.08.2014	PRODUCTION	OIL
31/5-I-13 AY2H	20.08.2014	10.09.2014	PRODUCTION	OIL
31/5-I-13 AY3H	11.09.2014	30.09.2014	PRODUCTION	OIL
31/5-I-13 AY4H	01.10.2014	11.10.2014	PRODUCTION	OIL
31/5-I-13 BY1H	06.09.2019	26.09.2019	PRODUCTION	OIL
31/5-I-13 BY2H	27.09.2019	14.10.2019	PRODUCTION	OIL
31/5-I-13 Y1H	06.07.2003	30.08.2003	PRODUCTION	OIL
31/5-I-13 Y2H	31.08.2003	02.10.2003	PRODUCTION	OIL
31/5-I-13 Y3H	03.10.2003	24.10.2003	PRODUCTION	OIL
31/5-I-13 Y4H				
31/5-I-14 H	12.01.1998	22.01.1998	OBSERVATION	NOT APPLICABLE
31/5-I-14 AH	23.01.1998	19.02.1998	PRODUCTION	OIL
31/5-I-14 BY1H	19.04.2005	14.05.2005	PRODUCTION	OIL
31/5-I-14 BY2H	15.05.2005	21.05.2005	PRODUCTION	OIL
31/5-I-14 BY3H	22.05.2005	30.05.2005	PRODUCTION	OIL



NPD Factpages

Field

OLJEDIREKTORATET

Printed: 22.10.2020 - 08:55

31/5-I-14 BY4H	31.05.2005	09.06.2005	PRODUCTION	OIL
31/5-I-14 BY5H	10.06.2005	26.06.2005	PRODUCTION	OIL
31/5-I-14 CY1H	12.09.2015	24.09.2015	PRODUCTION	OIL
31/5-I-14 CY2H	25.09.2015	02.10.2015	PRODUCTION	OIL
31/5-I-14 CY3H	03.10.2015	09.10.2015	PRODUCTION	OIL
31/5-I-21 H	24.11.1997	11.12.1997	OBSERVATION	NOT APPLICABLE
31/5-I-21 AH	27.05.1998	02.07.1998	PRODUCTION	OIL
31/5-I-21 BY1H	01.10.2009	11.11.2009	PRODUCTION	OIL
31/5-I-21 BY2H	12.11.2009	01.12.2009	PRODUCTION	OIL
31/5-I-21 CY1H	23.10.2015	11.11.2015	PRODUCTION	OIL
31/5-I-21 CY2H	12.11.2015	27.11.2015	PRODUCTION	OIL
31/5-I-21 CY3H	28.11.2015	11.12.2015	PRODUCTION	OIL
31/5-I-22 H	28.11.1997	18.12.1997	OBSERVATION	NOT APPLICABLE
31/5-I-22 AH	19.12.1997	06.01.1998	PRODUCTION	OIL
31/5-I-22 BY1H	28.07.2013	17.08.2013	PRODUCTION	OIL
31/5-I-22 BY2H	18.08.2013	01.09.2013	PRODUCTION	OIL
31/5-I-22 BY3H	02.09.2013	08.09.2013	PRODUCTION	OIL
31/5-I-23 H	02.04.1998	12.04.1998	OBSERVATION	NOT APPLICABLE
31/5-I-23 AH	13.04.1998	30.04.1998	PRODUCTION	OIL
31/5-I-23 BY1H	28.01.2019	15.02.2019	PRODUCTION	OIL
31/5-I-23 BY2H	16.02.2019	27.02.2019	PRODUCTION	OIL
31/5-I-23 BY3H	28.02.2019	11.03.2019	PRODUCTION	OIL
31/5-I-32 Y1H	26.01.2003	28.02.2003	PRODUCTION	OIL
31/5-I-32 Y2H	01.03.2003	13.03.2003	PRODUCTION	OIL
31/5-J-11 H	30.01.1999	12.02.1999	OBSERVATION	NOT APPLICABLE
31/5-J-11 AH	13.02.1999	02.03.1999	PRODUCTION	OIL
31/5-J-12 H	19.08.2000	11.09.2000	PRODUCTION	OIL
31/5-J-12 AY1H	09.03.2014	04.04.2014	PRODUCTION	OIL
31/5-J-12 AY2H	05.04.2014	14.04.2014	PRODUCTION	OIL
31/5-J-12 AY3H	15.04.2014	24.04.2014	PRODUCTION	OIL
31/5-J-12 BY1H	04.08.2017	19.08.2017	PRODUCTION	OIL
31/5-J-12 BY2H	20.08.2017	19.09.2017	PRODUCTION	OIL
31/5-J-13 H	16.03.1999	13.04.1999	OBSERVATION	OIL
31/5-J-13 AY1H	13.01.2009	06.02.2009	PRODUCTION	OIL
31/5-J-13 AY2H	07.02.2009	14.02.2009	PRODUCTION	OIL
31/5-J-13 AY3H	15.02.2009	28.02.2009	PRODUCTION	OIL
31/5-J-13 BY1H	23.12.2015	03.02.2016	PRODUCTION	OIL
31/5-J-13 BY2H	04.02.2016	10.03.2016	PRODUCTION	OIL
31/5-J-13 BY3H	24.03.2016	09.04.2016	PRODUCTION	OIL
31/5-J-14 H	29.01.2000	22.02.2000	PRODUCTION	OIL



NPD Factpages

Field

Printed: 22.10.2020 - 08:55

OLJEDIREKTORATET

31/5-J-14 AY1H	02.01.2011	05.03.2011	PRODUCTION	OIL
31/5-J-14 AY2H	06.03.2011	20.03.2011	PRODUCTION	OIL
31/5-J-14 BH	13.08.2015	27.08.2015	PRODUCTION	OIL
31/5-J-21 AY1H	11.02.2015	10.03.2015	PRODUCTION	OIL
31/5-J-21 AY2H	11.03.2015	19.03.2015	PRODUCTION	OIL
31/5-J-21 AY3H	20.03.2015	29.03.2015	PRODUCTION	OIL
31/5-J-21 AY4H	30.03.2015	04.04.2015	PRODUCTION	OIL
31/5-J-21 Y1H	10.06.2000	22.07.2000	PRODUCTION	OIL
31/5-J-21 Y2H	23.07.2000	04.08.2000	PRODUCTION	OIL
31/5-J-22 AY1H	24.10.2011	15.11.2011	PRODUCTION	OIL
31/5-J-22 AY2H	16.11.2011	29.11.2011	PRODUCTION	OIL
31/5-J-22 AY3H	30.11.2011	18.12.2011	PRODUCTION	OIL
31/5-J-22 Y1H	06.02.2001	08.03.2001	PRODUCTION	OIL
31/5-J-22 Y2H	09.03.2001	17.03.2001	PRODUCTION	OIL
31/5-J-23 H	22.09.1999	02.10.1999	OBSERVATION	NOT APPLICABLE
31/5-J-23 AH	03.10.1999	19.10.1999	PRODUCTION	OIL
31/5-J-23 BY1H	25.11.2014	26.12.2014	PRODUCTION	OIL
31/5-J-23 BY2H	27.12.2014	07.01.2015	PRODUCTION	OIL
31/5-J-23 BY3H	08.01.2015	29.01.2015	PRODUCTION	OIL
31/5-J-24 H	09.12.1999	23.01.2000	PRODUCTION	OIL
31/5-J-24 AY1H	17.05.2007	18.07.2007	PRODUCTION	OIL
31/5-J-24 AY2H	19.07.2007	27.07.2007	PRODUCTION	OIL
31/5-J-24 AY3H	28.07.2007	11.08.2007	PRODUCTION	OIL
31/5-J-41	11.07.1997	23.07.1997	OBSERVATION	NOT APPLICABLE
31/5-Z-1 H	06.10.2010	26.10.2010	INJECTION	GAS
31/5-Z-2 H	06.11.2010	22.11.2010	INJECTION	GAS
31/6-A-1	03.02.1997	08.03.1997	PRODUCTION	GAS
31/6-A-2	07.09.1996	11.10.1996	PRODUCTION	GAS
31/6-A-3	01.09.1996	02.10.1996	PRODUCTION	GAS
31/6-A-4	10.10.1997	14.03.1998	PRODUCTION	GAS
31/6-A-5	29.01.1997	17.03.1997	PRODUCTION	GAS
31/6-A-6	30.03.1996	12.06.1996	PRODUCTION	GAS
31/6-A-7	24.09.1995	17.12.1995	PRODUCTION	GAS
31/6-A-8	24.10.1997	27.01.1998	OBSERVATION	NOT APPLICABLE
31/6-A-9	20.10.1997	04.04.1998	PRODUCTION	GAS
31/6-A-10	10.04.1996	03.06.1996	PRODUCTION	GAS
31/6-A-11	10.11.1995	23.01.1996	PRODUCTION	GAS
31/6-A-12	27.11.1995	17.05.1996	PRODUCTION	GAS
31/6-A-13	09.02.1997	23.04.1998	PRODUCTION	GAS
31/6-A-14	20.01.1997	26.03.1997	PRODUCTION	GAS
31/6-A-15	23.10.1995	02.01.1996	PRODUCTION	GAS



Field

OLJEDIREKTORATET

31/6-A-16	22.04.1996	26.05.1996	PRODUCTION	GAS
31/6-A-17	19.08.1996	21.10.1996	PRODUCTION	GAS
31/6-A-18	15.10.1997	16.11.1998	PRODUCTION	GAS
31/6-A-19	04.10.1997	25.03.1998	PRODUCTION	GAS
31/6-A-20	20.08.1997	04.03.1998	PRODUCTION	GAS
31/6-A-21	28.04.1998	15.05.1998	PRODUCTION	GAS
31/6-A-21 A	26.10.1998	06.11.1998	PRODUCTION	GAS
31/6-A-22	01.01.1998	13.09.1998	PRODUCTION	GAS
31/6-A-23	16.05.1998	03.10.1998	PRODUCTION	GAS
31/6-A-24	25.12.1997	17.10.1998	PRODUCTION	GAS
31/6-A-25	09.11.1996	05.01.1997	PRODUCTION	GAS
31/6-A-26	20.11.1996	26.12.1996	PRODUCTION	GAS
31/6-A-27	17.06.1996	13.08.1996	PRODUCTION	GAS
31/6-A-28	09.05.1997	25.09.1998	PRODUCTION	GAS
31/6-A-29	06.07.1996	22.07.1996	PRODUCTION	GAS
31/6-A-30	29.01.1996	25.03.1996	PRODUCTION	GAS
31/6-A-31	26.06.1996	03.08.1996	PRODUCTION	GAS
31/6-A-32	21.04.1997	29.09.1997	PRODUCTION	GAS
31/6-A-33	31.03.1997	28.06.1997	PRODUCTION	GAS
31/6-A-34	27.10.1996	15.01.1997	PRODUCTION	GAS
31/6-A-35	21.02.1996	14.03.1996	PRODUCTION	GAS
31/6-A-36	30.11.1996	16.12.1996	PRODUCTION	GAS
31/6-A-37	22.05.1998	22.07.1998	PRODUCTION	GAS
31/6-A-38	06.04.1997	02.09.1997	PRODUCTION	GAS
31/6-A-39	12.04.1997	11.09.1997	PRODUCTION	GAS
31/6-A-40	16.04.1997	21.09.1997	PRODUCTION	GAS

Wellbores - other

Wellbore name	Entered date	Completed date	Purpose	Status
31/2-U-11	05.12.2009	06.12.2009	SHALLOW GAS	P&A
31/2-U-12	25.01.2010	27.01.2010	SOIL DRILLING	P&A
31/5-U-3	09.09.2010	10.09.2010	SHALLOW GAS	P&A
31/6-U-23			UNKNOWN	
31/6-U-24			UNKNOWN	