



General information

Field name	ODIN
Factmaps in new window	link
Current activity status	Shut down
Discovery wellbore	30/10-2
Discovery year.	1974
Main area	North Sea
Main supply base	
NPDID field	43610

Picture

Picture not available

Discoveries included

Discovery name
30/10-2 Odin

Activity status - history

Status	Status from	Status to
Shut down	01.08.1994	
Producing	01.04.1984	31.07.1994
Approved for production	18.07.1980	31.03.1984

Located in

Block name	Prod. licence
30/10	903

Owner - current

Owner kind	Owner name
PRODUCTION LICENSE	903

Operatorship - current

Company name
Equinor Energy AS

Licensees - current

Company name	Nation code	Company share [%]
Equinor Energy AS	NO	90.000000
Wellesley Petroleum AS	NO	10.000000



The NPD estimate for reserves (Norwegian share)

Valid date: 31.12.2020

Orig. recoverable oil [mill Sm3]	Orig. recoverable gas [bill Sm3]	Orig. recoverable NGL [mill tonn]	Orig. recoverable cond. [mill Sm3]	Orig. recoverable oil eq. [mill Sm3 o.e]
0.00	27.30	0.00	0.22	27.52

Remaining oil [mill Sm3]	Remaining gas [bill Sm3]	Remaining NGL [mill tonn]	Remaining cond. [mill Sm3]	Remaining oil eq. [mill Sm3 o.e]
0.00	0.00	0.00	0.00	0.00

Orig. inplace oil [mill Sm3]	Orig. inplace ass. liquid [mill Sm3]	Orig. inplace ass. gas [bill Sm3]	Orig. inplace free gas [bill Sm3]
13.20	0.27	0.00	37.30

Description

Type	Text	Date updated
Status	The field was shut down in 1994 and the facility removed in 1996/1997. A new field center for the area north of Alvheim field (NOA-project) is planned. PDO is expected in 2022, and this project can give opportunities to future re-development of Odin.	21.12.2021
Development	Odin is a field in the central part of the North Sea, eight kilometres northeast of the Frigg field. The water depth is 100 metres. Odin was discovered in 1974, and the plan for development and operation (PDO) was approved in 1980. The development solution was a facility with simplified drilling and processing equipment and living quarters. Production started in 1984.	25.04.2019
Reservoir	Odin produced gas from sandstone of Eocene age in the Frigg Formation. The reservoir lies at a depth of 2,000 metres. It has pressure communication with the Frigg reservoir via the aquifer.	26.02.2020
Recovery	The field was produced by pressure depletion. The reservoir had limited water drive compared with the other fields in the Frigg area.	11.04.2017
Transport	The gas was sent via pipeline to Frigg (TCP2) for further processing before export through the Frigg Norwegian Pipeline to the Shell-Esso Gas and Liquids (SEGAL) terminal at St Fergus in the UK.	16.03.2018

Investments (expected)

Investments (historical)



	Investments [mill NOK nominal values]
Sum	2613
2000	0
1999	0
1998	0
1997	0
1996	0
1995	0
1994	0
1993	1
1992	2
1991	1
1990	1
1989	2
1988	2
1987	2
1986	2
1985	78
1984	394
1983	982
1982	896
1981	209
1980	18
1979	12
1978	12

Production , saleable

	Month	Net - oil [mill Sm3]	Net - gas [bill Sm3]	Net - condensate [mill Sm3]	Net - NGL [mill Sm3]	Net - oil equivalent [mill Sm3]
Sum		0.000000	27.259095	0.215478	0.000000	27.474573
1994		0.000000	0.565082	0.006614	0.000000	0.571696
	1	0.000000	0.081820	0.000668	0.000000	0.082488
	2	0.000000	0.073633	0.000711	0.000000	0.074344
	3	0.000000	0.084921	0.000863	0.000000	0.085784
	4	0.000000	0.083987	0.000909	0.000000	0.084896
	5	0.000000	0.081729	0.001060	0.000000	0.082789
	6	0.000000	0.080212	0.001161	0.000000	0.081373
	7	0.000000	0.071179	0.001121	0.000000	0.072300
1993	8	0.000000	0.007601	0.000121	0.000000	0.007722
		0.000000	1.503364	0.016188	0.000000	1.519552
	1	0.000000	0.189961	0.002021	0.000000	0.191982



NPD Factpages

Field

Printed: 23.1.2022 - 11:18

1993	2	0.000000	0.160926	0.001062	0.000000	0.161988
	3	0.000000	0.169128	0.001156	0.000000	0.170284
	4	0.000000	0.157495	0.002695	0.000000	0.160190
	5	0.000000	0.156080	0.000888	0.000000	0.156968
	6	0.000000	0.035350	0.000390	0.000000	0.035740
	7	0.000000	0.116334	0.001922	0.000000	0.118256
	8	0.000000	0.091323	0.001506	0.000000	0.092829
	9	0.000000	0.124460	0.001464	0.000000	0.125924
	10	0.000000	0.113774	0.001389	0.000000	0.115163
	11	0.000000	0.099289	0.000861	0.000000	0.100150
	12	0.000000	0.089244	0.000834	0.000000	0.090078
	1992		0.000000	2.288614	0.023290	0.000000
1		0.000000	0.242611	0.001877	0.000000	0.244488
2		0.000000	0.215108	0.001769	0.000000	0.216877
3		0.000000	0.219878	0.002576	0.000000	0.222454
4		0.000000	0.233354	0.001865	0.000000	0.235219
5		0.000000	0.230495	0.001438	0.000000	0.231933
6		0.000000	0.165245	0.001114	0.000000	0.166359
7		0.000000	0.209420	0.001085	0.000000	0.210505
8		0.000000	0.138151	0.001092	0.000000	0.139243
9		0.000000	0.189341	0.002804	0.000000	0.192145
10		0.000000	0.148819	0.002478	0.000000	0.151297
11		0.000000	0.108279	0.003238	0.000000	0.111517
12	0.000000	0.187913	0.001954	0.000000	0.189867	
1991		0.000000	2.810438	0.029794	0.000000	2.840232
	1	0.000000	0.282996	0.002262	0.000000	0.285258
	2	0.000000	0.265396	0.002535	0.000000	0.267931
	3	0.000000	0.276387	0.003807	0.000000	0.280194
	4	0.000000	0.277035	0.002218	0.000000	0.279253
	5	0.000000	0.256411	0.002712	0.000000	0.259123
	6	0.000000	0.205558	0.001544	0.000000	0.207102
	7	0.000000	0.199708	0.001490	0.000000	0.201198
	8	0.000000	0.174167	0.002114	0.000000	0.176281
	9	0.000000	0.205076	0.002676	0.000000	0.207752
	10	0.000000	0.220421	0.002394	0.000000	0.222815
	11	0.000000	0.227998	0.002981	0.000000	0.230979
12	0.000000	0.219285	0.003061	0.000000	0.222346	
1990		0.000000	2.625087	0.020020	0.000000	2.645107
	1	0.000000	0.297774	0.002000	0.000000	0.299774
	2	0.000000	0.261612	0.002222	0.000000	0.263834
	3	0.000000	0.261080	0.001900	0.000000	0.262980
	4	0.000000	0.244664	0.001871	0.000000	0.246535
	5	0.000000	0.145558	0.001003	0.000000	0.146561



NPD Factpages

Field

Printed: 23.1.2022 - 11:18

1990	6	0.000000	0.150303	0.001192	0.000000	0.151495
	7	0.000000	0.162436	0.001501	0.000000	0.163937
	8	0.000000	0.212086	0.001659	0.000000	0.213745
	9	0.000000	0.148473	0.000682	0.000000	0.149155
	10	0.000000	0.198702	0.002137	0.000000	0.200839
	11	0.000000	0.257250	0.002668	0.000000	0.259918
	12	0.000000	0.285149	0.001185	0.000000	0.286334
1989		0.000000	2.827152	0.018911	0.000000	2.846063
	1	0.000000	0.253049	0.001644	0.000000	0.254693
	2	0.000000	0.270443	0.002760	0.000000	0.273203
	3	0.000000	0.275879	0.001279	0.000000	0.277158
	4	0.000000	0.298337	0.001584	0.000000	0.299921
	5	0.000000	0.241347	0.001784	0.000000	0.243131
	6	0.000000	0.211641	0.001779	0.000000	0.213420
	7	0.000000	0.062658	0.000031	0.000000	0.062689
	8	0.000000	0.136567	0.000809	0.000000	0.137376
	9	0.000000	0.237541	0.001542	0.000000	0.239083
	10	0.000000	0.270771	0.001262	0.000000	0.272033
	11	0.000000	0.271982	0.001433	0.000000	0.273415
12	0.000000	0.296937	0.003004	0.000000	0.299941	
1988		0.000000	2.728852	0.015144	0.000000	2.743996
	1	0.000000	0.305502	0.001954	0.000000	0.307456
	2	0.000000	0.284639	0.001306	0.000000	0.285945
	3	0.000000	0.285592	0.001195	0.000000	0.286787
	4	0.000000	0.295385	0.001590	0.000000	0.296975
	5	0.000000	0.254853	0.001833	0.000000	0.256686
	6	0.000000	0.226875	0.001453	0.000000	0.228328
	7	0.000000	0.160250	0.000294	0.000000	0.160544
	8	0.000000	0.104638	0.000720	0.000000	0.105358
	9	0.000000	0.087670	0.000619	0.000000	0.088289
	10	0.000000	0.234727	0.001151	0.000000	0.235878
	11	0.000000	0.239976	0.001268	0.000000	0.241244
12	0.000000	0.248745	0.001761	0.000000	0.250506	
1987		0.000000	3.475083	0.020589	0.000000	3.495672
	1	0.000000	0.362187	0.004094	0.000000	0.366281
	2	0.000000	0.337400	0.002100	0.000000	0.339500
	3	0.000000	0.377058	0.000029	0.000000	0.377087
	4	0.000000	0.315513	0.003380	0.000000	0.318893
	5	0.000000	0.374251	0.002406	0.000000	0.376657
	6	0.000000	0.300347	0.002165	0.000000	0.302512
	7	0.000000	0.065687	-0.000072	0.000000	0.065615
	8	0.000000	0.283194	0.001171	0.000000	0.284365
9	0.000000	0.264401	0.000908	0.000000	0.265309	



NPD Factpages

Field

Printed: 23.1.2022 - 11:18

1987	10	0.000000	0.219038	0.001523	0.000000	0.220561
	11	0.000000	0.268240	0.001175	0.000000	0.269415
	12	0.000000	0.307767	0.001710	0.000000	0.309477
1986		0.000000	3.370983	0.020719	0.000000	3.391702
	1	0.000000	0.343299	0.001164	0.000000	0.344463
	2	0.000000	0.311583	0.001889	0.000000	0.313472
	3	0.000000	0.309815	0.010430	0.000000	0.320245
	4	0.000000	0.104984	-0.000499	0.000000	0.104485
	5	0.000000	0.310391	0.001758	0.000000	0.312149
	6	0.000000	0.188470	0.002225	0.000000	0.190695
	7	0.000000	0.214884	-0.008242	0.000000	0.206642
	8	0.000000	0.293771	0.000920	0.000000	0.294691
	9	0.000000	0.291574	0.001999	0.000000	0.293573
	10	0.000000	0.383249	0.003213	0.000000	0.386462
	11	0.000000	0.310084	0.002149	0.000000	0.312233
12	0.000000	0.308879	0.003713	0.000000	0.312592	
1985		0.000000	3.549164	0.027948	0.000000	3.577112
	1	0.000000	0.330933	0.003048	0.000000	0.333981
	2	0.000000	0.304429	0.003098	0.000000	0.307527
	3	0.000000	0.341950	0.003476	0.000000	0.345426
	4	0.000000	0.333476	0.003273	0.000000	0.336749
	5	0.000000	0.348473	0.003366	0.000000	0.351839
	6	0.000000	0.314254	0.002740	0.000000	0.316994
	7	0.000000	0.100534	0.001252	0.000000	0.101786
	8	0.000000	0.229221	0.001481	0.000000	0.230702
	9	0.000000	0.230906	0.001023	0.000000	0.231929
	10	0.000000	0.340731	0.003041	0.000000	0.343772
	11	0.000000	0.332596	0.000963	0.000000	0.333559
12	0.000000	0.341661	0.001187	0.000000	0.342848	
1984		0.000000	1.515276	0.016261	0.000000	1.531537
	4	0.000000	0.037928	0.000146	0.000000	0.038074
	5	0.000000	0.072694	0.000616	0.000000	0.073310
	6	0.000000	0.096251	-0.000006	0.000000	0.096245
	7	0.000000	0.056350	0.000116	0.000000	0.056466
	8	0.000000	0.102163	0.000419	0.000000	0.102582
	9	0.000000	0.167136	0.004893	0.000000	0.172029
	10	0.000000	0.335618	0.003910	0.000000	0.339528
	11	0.000000	0.305486	0.003132	0.000000	0.308618
12	0.000000	0.341650	0.003035	0.000000	0.344685	

Production , sum wellbores



NPD Factpages

Field

Printed: 23.1.2022 - 11:18

	Month	Gross - oil [mill Sm3]	Gross - gas [bill Sm3]	Gross - condensate [mill Sm3]	Gross - oil equivalents [mill Sm3]
Sum		0.000000	27.739622	0.124318	27.863940
1994		0.000000	0.622299	0.002751	0.625050
	1	0.000000	0.088333	0.000378	0.088711
	2	0.000000	0.080371	0.000356	0.080727
	3	0.000000	0.092803	0.000413	0.093216
	4	0.000000	0.092511	0.000417	0.092928
	5	0.000000	0.090846	0.000401	0.091247
	6	0.000000	0.092281	0.000398	0.092679
	7	0.000000	0.084714	0.000386	0.085100
1993	8	0.000000	0.000440	0.000002	0.000442
		0.000000	1.558775	0.006409	1.565184
	1	0.000000	0.192501	0.000800	0.193301
	2	0.000000	0.165515	0.000687	0.166202
	3	0.000000	0.175193	0.000725	0.175918
	4	0.000000	0.163761	0.000687	0.164448
	5	0.000000	0.158669	0.000671	0.159340
	6	0.000000	0.041799	0.000169	0.041968
	7	0.000000	0.123716	0.000466	0.124182
	8	0.000000	0.090988	0.000366	0.091354
	9	0.000000	0.133400	0.000527	0.133927
	10	0.000000	0.116364	0.000493	0.116857
11	0.000000	0.102905	0.000424	0.103329	
12	0.000000	0.093964	0.000394	0.094358	
1992		0.000000	2.365833	0.010391	2.376224
	1	0.000000	0.243329	0.001127	0.244456
	2	0.000000	0.216219	0.000986	0.217205
	3	0.000000	0.221697	0.000984	0.222681
	4	0.000000	0.240017	0.001130	0.241147
	5	0.000000	0.237335	0.001101	0.238436
	6	0.000000	0.202210	0.000915	0.203125
	7	0.000000	0.214499	0.000951	0.215450
	8	0.000000	0.138498	0.000545	0.139043
	9	0.000000	0.199654	0.000821	0.200475
	10	0.000000	0.144153	0.000575	0.144728
	11	0.000000	0.116894	0.000465	0.117359
12	0.000000	0.191328	0.000791	0.192119	
1991		0.000000	2.862876	0.013185	2.876061
	1	0.000000	0.288693	0.001356	0.290049
	2	0.000000	0.266816	0.001267	0.268083
	3	0.000000	0.284865	0.001377	0.286242
	4	0.000000	0.279810	0.001345	0.281155



NPD Factpages

Field

Printed: 23.1.2022 - 11:18

1991	5	0.000000	0.259829	0.001227	0.261056
	6	0.000000	0.208804	0.000993	0.209797
	7	0.000000	0.203987	0.000873	0.204860
	8	0.000000	0.180052	0.000766	0.180818
	9	0.000000	0.217487	0.000961	0.218448
	10	0.000000	0.219814	0.000971	0.220785
	11	0.000000	0.230686	0.001028	0.231714
	12	0.000000	0.222033	0.001021	0.223054
1990		0.000000	2.758510	0.012483	2.770993
	1	0.000000	0.297813	0.001398	0.299211
	2	0.000000	0.259221	0.001277	0.260498
	3	0.000000	0.265160	0.001344	0.266504
	4	0.000000	0.247301	0.001118	0.248419
	5	0.000000	0.247301	0.001118	0.248419
	6	0.000000	0.145876	0.000574	0.146450
	7	0.000000	0.164552	0.000671	0.165223
	8	0.000000	0.220833	0.000951	0.221784
	9	0.000000	0.150775	0.000654	0.151429
	10	0.000000	0.205238	0.000837	0.206075
	11	0.000000	0.269770	0.001251	0.271021
12	0.000000	0.284670	0.001290	0.285960	
1989		0.000000	2.841122	0.013100	2.854222
	1	0.000000	0.282706	0.001258	0.283964
	2	0.000000	0.248535	0.001149	0.249684
	3	0.000000	0.278904	0.001629	0.280533
	4	0.000000	0.298206	0.001459	0.299665
	5	0.000000	0.240969	0.001041	0.242010
	6	0.000000	0.211984	0.000879	0.212863
	7	0.000000	0.055423	0.000246	0.055669
	8	0.000000	0.147482	0.000623	0.148105
	9	0.000000	0.241266	0.001049	0.242315
	10	0.000000	0.268495	0.001177	0.269672
	11	0.000000	0.269861	0.001216	0.271077
12	0.000000	0.297291	0.001374	0.298665	
1988		0.000000	2.741583	0.012646	2.754229
	1	0.000000	0.303467	0.001445	0.304912
	2	0.000000	0.287306	0.001363	0.288669
	3	0.000000	0.287139	0.001360	0.288499
	4	0.000000	0.299077	0.001484	0.300561
	5	0.000000	0.253460	0.001194	0.254654
	6	0.000000	0.220213	0.001001	0.221214
	7	0.000000	0.170169	0.000771	0.170940
8	0.000000	0.101003	0.000352	0.101355	



NPD Factpages

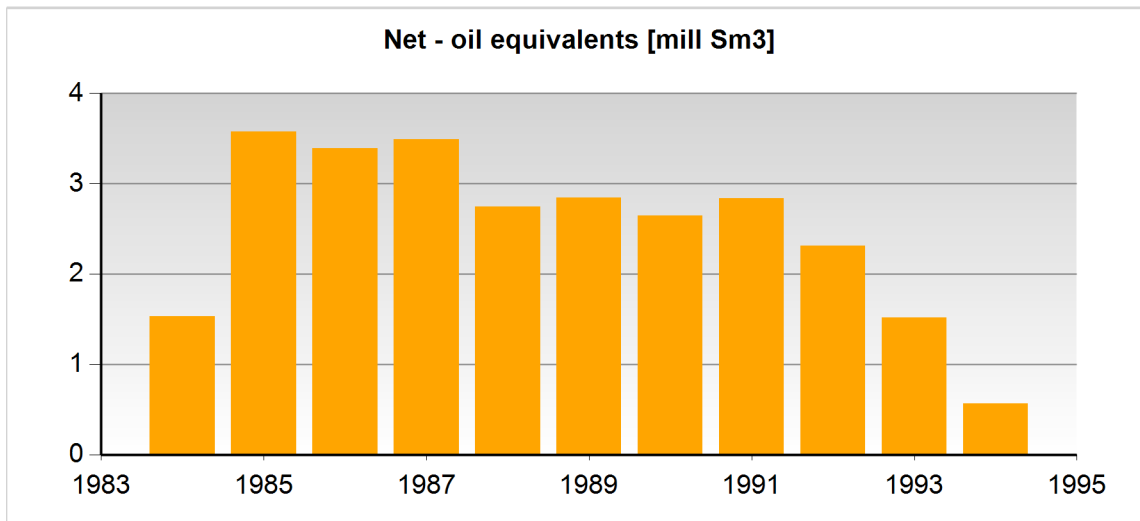
Field

Printed: 23.1.2022 - 11:18

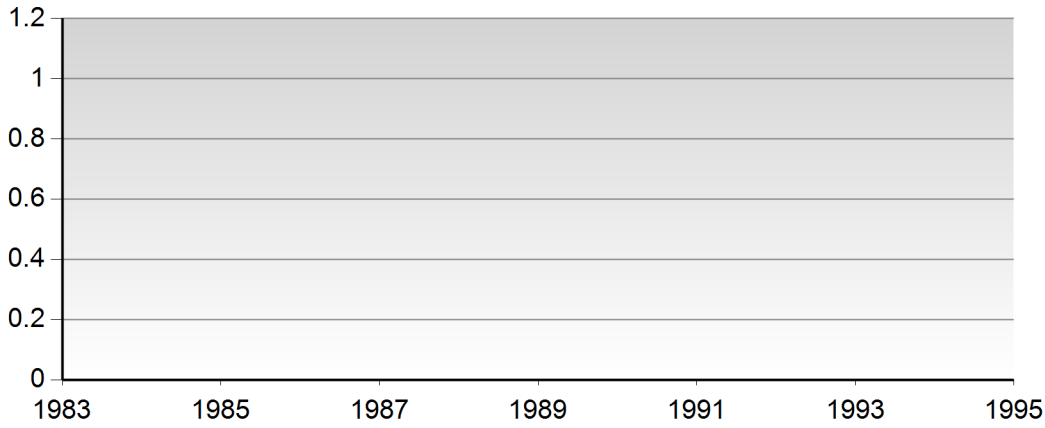
1988	9	0.000000	0.089371	0.000401	0.089772
	10	0.000000	0.234397	0.001057	0.235454
	11	0.000000	0.242395	0.001100	0.243495
	12	0.000000	0.253586	0.001118	0.254704
1987		0.000000	3.461557	0.016475	3.478032
	1	0.000000	0.372318	0.001769	0.374087
	2	0.000000	0.338605	0.001706	0.340311
	3	0.000000	0.370618	0.001846	0.372464
	4	0.000000	0.316267	0.001524	0.317791
	5	0.000000	0.370731	0.001862	0.372593
	6	0.000000	0.300963	0.001384	0.302347
	7	0.000000	0.066446	0.000267	0.066713
	8	0.000000	0.281957	0.001343	0.283300
	9	0.000000	0.261806	0.001128	0.262934
	10	0.000000	0.210779	0.000927	0.211706
	11	0.000000	0.264511	0.001239	0.265750
12	0.000000	0.306556	0.001480	0.308036	
1986		0.000000	3.388758	0.014418	3.403176
	1	0.000000	0.348936	0.001500	0.350436
	2	0.000000	0.317179	0.001336	0.318515
	3	0.000000	0.344597	0.001461	0.346058
	4	0.000000	0.107043	0.000453	0.107496
	5	0.000000	0.312951	0.001349	0.314300
	6	0.000000	0.192209	0.000802	0.193011
	7	0.000000	0.235776	0.000993	0.236769
	8	0.000000	0.299531	0.001281	0.300812
	9	0.000000	0.293460	0.001242	0.294702
	10	0.000000	0.314241	0.001330	0.315571
	11	0.000000	0.309997	0.001325	0.311322
12	0.000000	0.312838	0.001346	0.314184	
1985		0.000000	3.606692	0.015195	3.621887
	1	0.000000	0.339467	0.001386	0.340853
	2	0.000000	0.310822	0.001238	0.312060
	3	0.000000	0.347763	0.001489	0.349252
	4	0.000000	0.337929	0.001403	0.339332
	5	0.000000	0.349257	0.001538	0.350795
	6	0.000000	0.315729	0.001305	0.317034
	7	0.000000	0.101595	0.000467	0.102062
	8	0.000000	0.234461	0.000977	0.235438
	9	0.000000	0.235225	0.001018	0.236243
	10	0.000000	0.349010	0.001466	0.350476
	11	0.000000	0.337476	0.001410	0.338886
12	0.000000	0.347958	0.001498	0.349456	

1984		0.000000	1.531617	0.007265	1.538882
	4	0.000000	0.037952	0.000036	0.037988
	5	0.000000	0.073373	0.000346	0.073719
	6	0.000000	0.096055	0.000567	0.096622
	7	0.000000	0.056831	0.000181	0.057012
	8	0.000000	0.102496	0.000588	0.103084
	9	0.000000	0.170046	0.000808	0.170854
	10	0.000000	0.338359	0.001745	0.340104
	11	0.000000	0.310658	0.001531	0.312189
	12	0.000000	0.345847	0.001463	0.347310

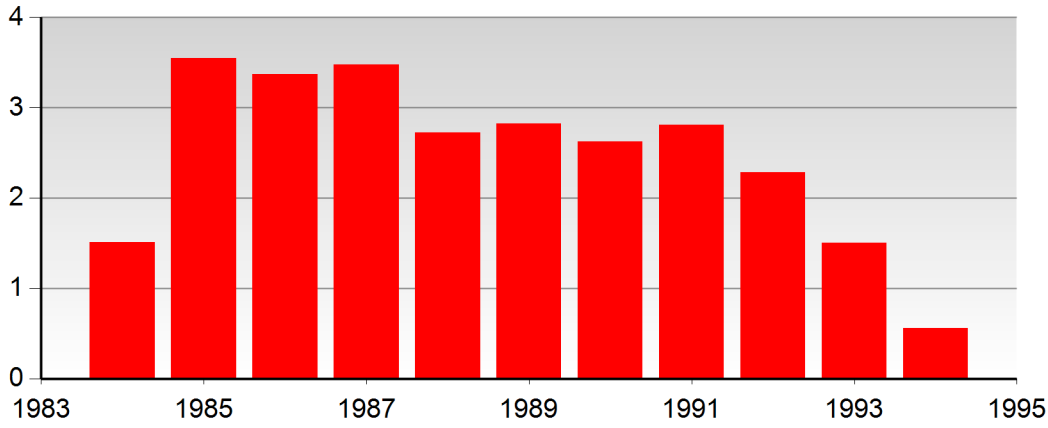
Production - charts



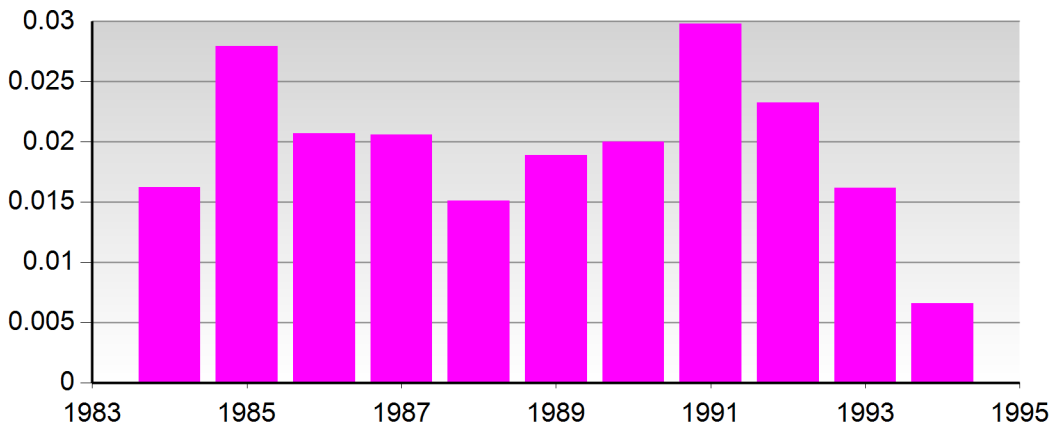
Net - oil [mill Sm³]

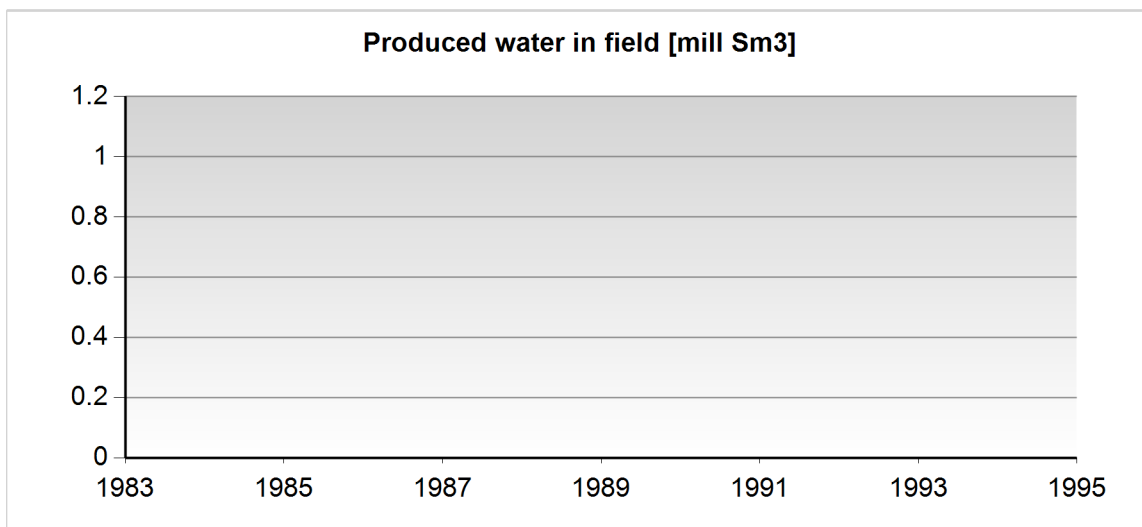
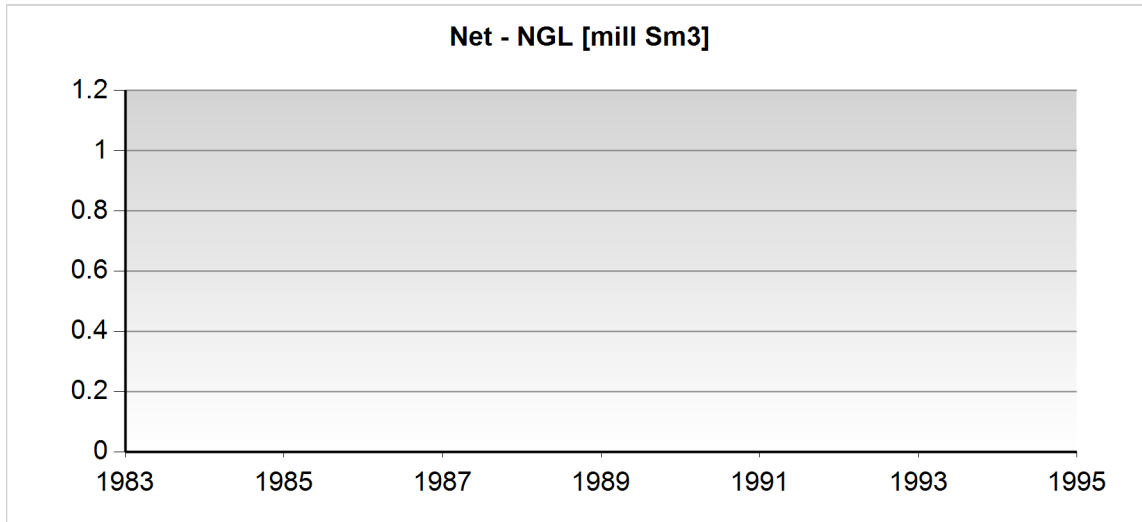


Net - gas [bill Sm³]



Net - condensate [mill Sm³]





Any produced water is only included after 1.1.2000

Wellbores - exploration

Wellbore name	Entered date	Completed date	Purpose	Status	Content
30/10-2	24.12.1973	28.03.1974	WILDCAT	P&A	GAS
30/10-3	08.08.1974	31.08.1974	APPRAISAL	P&A	GAS

Wellbores - development

Wellbore name	Entered date	Completed date	Purpose	Content
30/10-A-1	15.05.1984	18.07.1984	PRODUCTION	GAS
30/10-A-2	12.05.1984	26.06.1984	PRODUCTION	GAS
30/10-A-3	10.04.1984	04.05.1984	PRODUCTION	GAS
30/10-A-4	17.12.1983	01.02.1984	PRODUCTION	GAS
30/10-A-5	28.07.1984	13.08.1984	PRODUCTION	GAS
30/10-A-7	04.11.1984	24.11.1984	PRODUCTION	GAS
30/10-A-8	31.10.1984	19.12.1984	PRODUCTION	GAS
30/10-A-9	27.10.1984	20.01.1985	PRODUCTION	GAS



NPD Factpages

Field

Printed: 23.1.2022 - 11:18

30/10-A-10	21.08.1984	24.10.1984	PRODUCTION	GAS
30/10-A-11	20.05.1984	06.06.1984	PRODUCTION	GAS
30/10-A-12	26.02.1984	17.03.1984	PRODUCTION	GAS

Wellbores - other

Wellbore name	Entered date	Completed date	Purpose	Status
---------------	--------------	----------------	---------	--------